



# Journée Groupe DEPHY Sud Manche Bilan de Campagne Technico-Economique 2021-2022

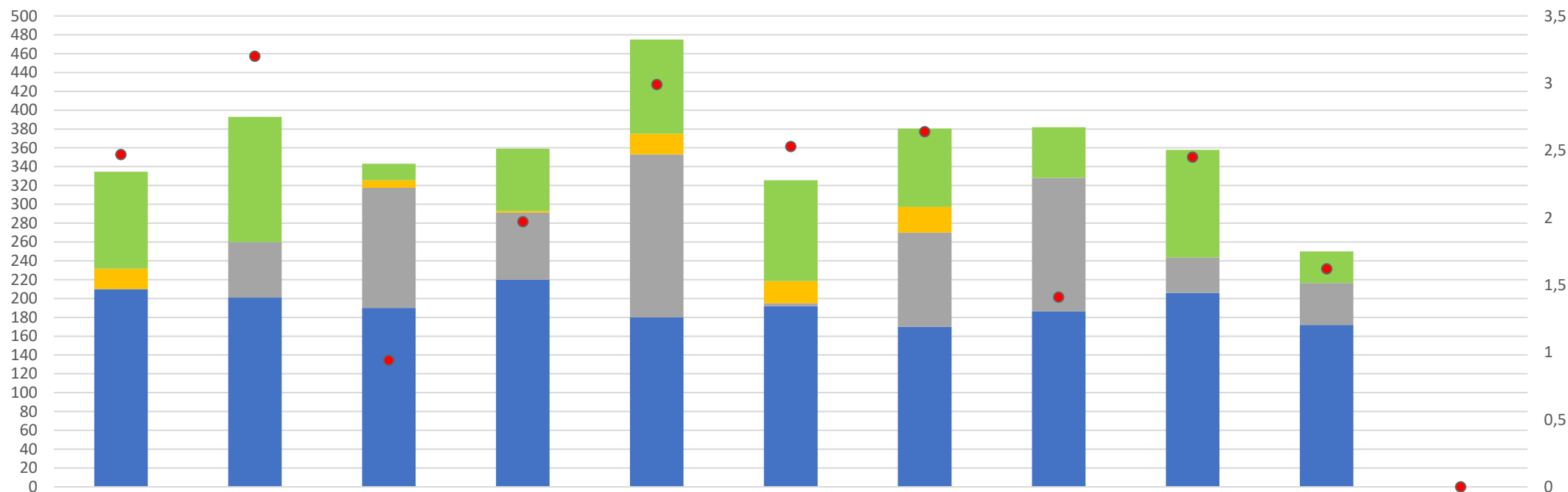
Mercredi 16/11/2022

[normandie.chambres-agriculture.fr](http://normandie.chambres-agriculture.fr)



# Maïs

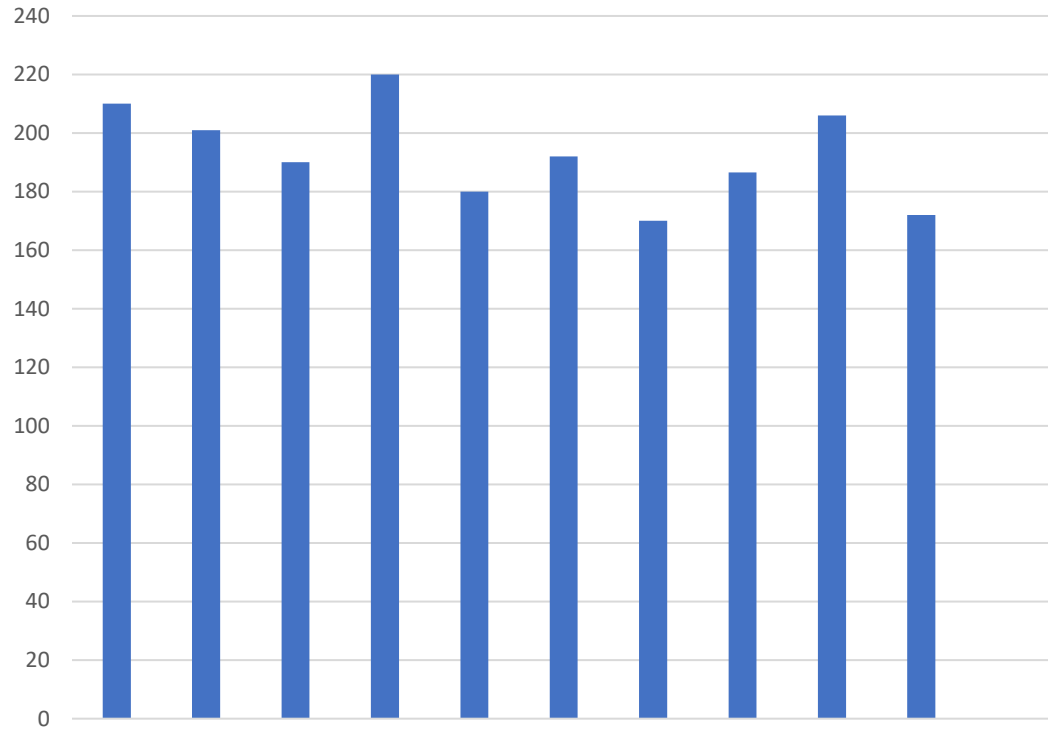
Maïs : Somme cumulée des intrants €/ha



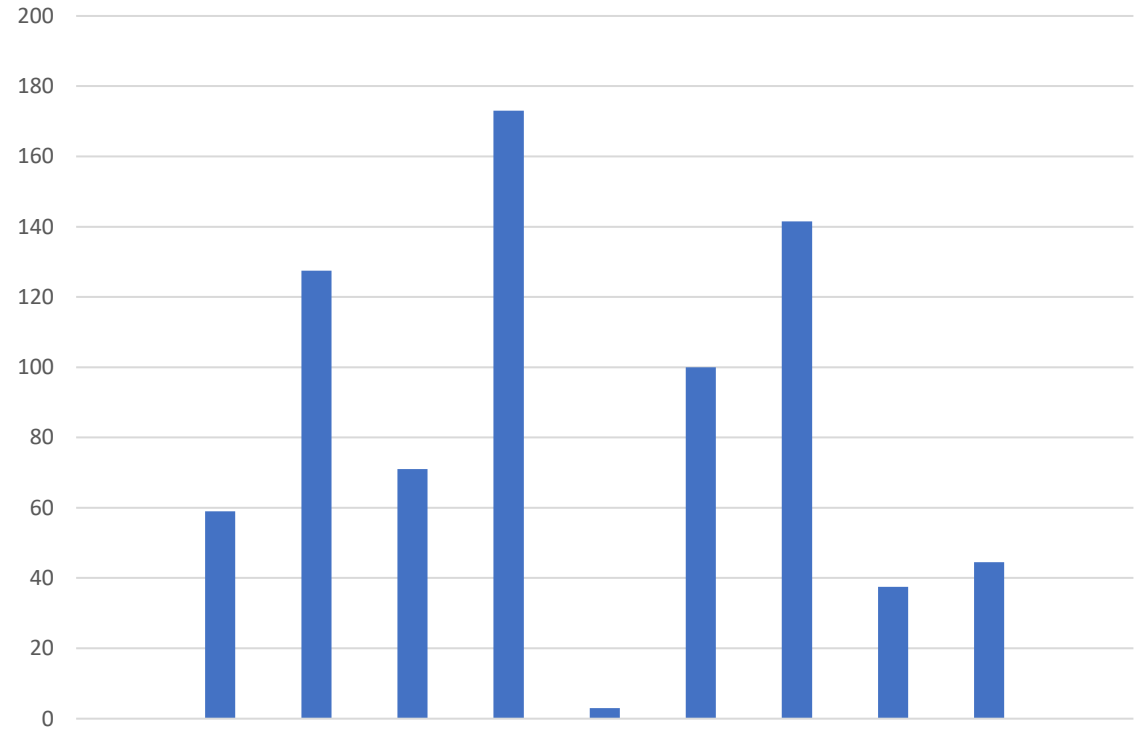
- Semences (€/ha)
- Engrais organique (€/ha)
- Engrais minéral (€/ha)
- Désherbage glyphosate (€/ha)
- Désherbage (€/ha)
- Fongicides (€/ha)
- Régulateurs (€/ha)
- Insecticides et antilimaces (€/ha)
- IFT

# Maïs

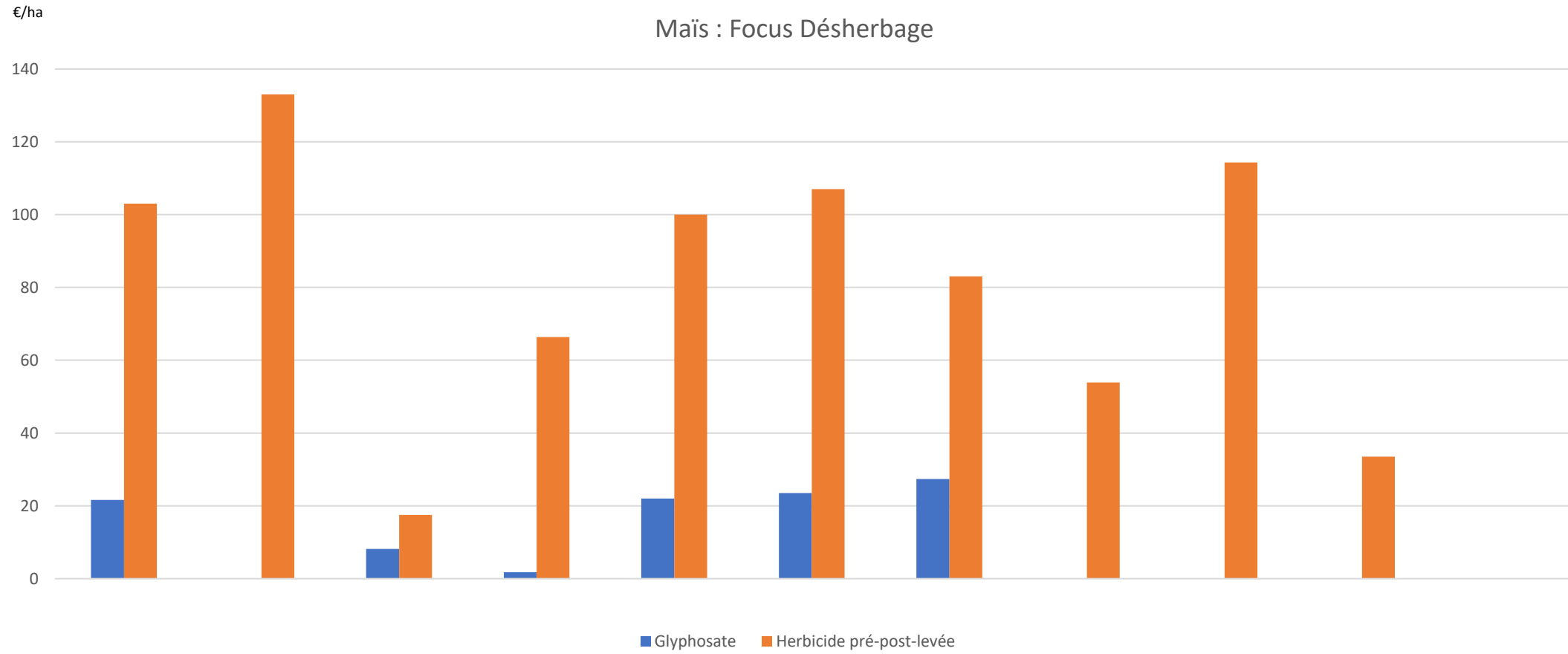
Semences (€/ha)



Engrais miné (€/ha)

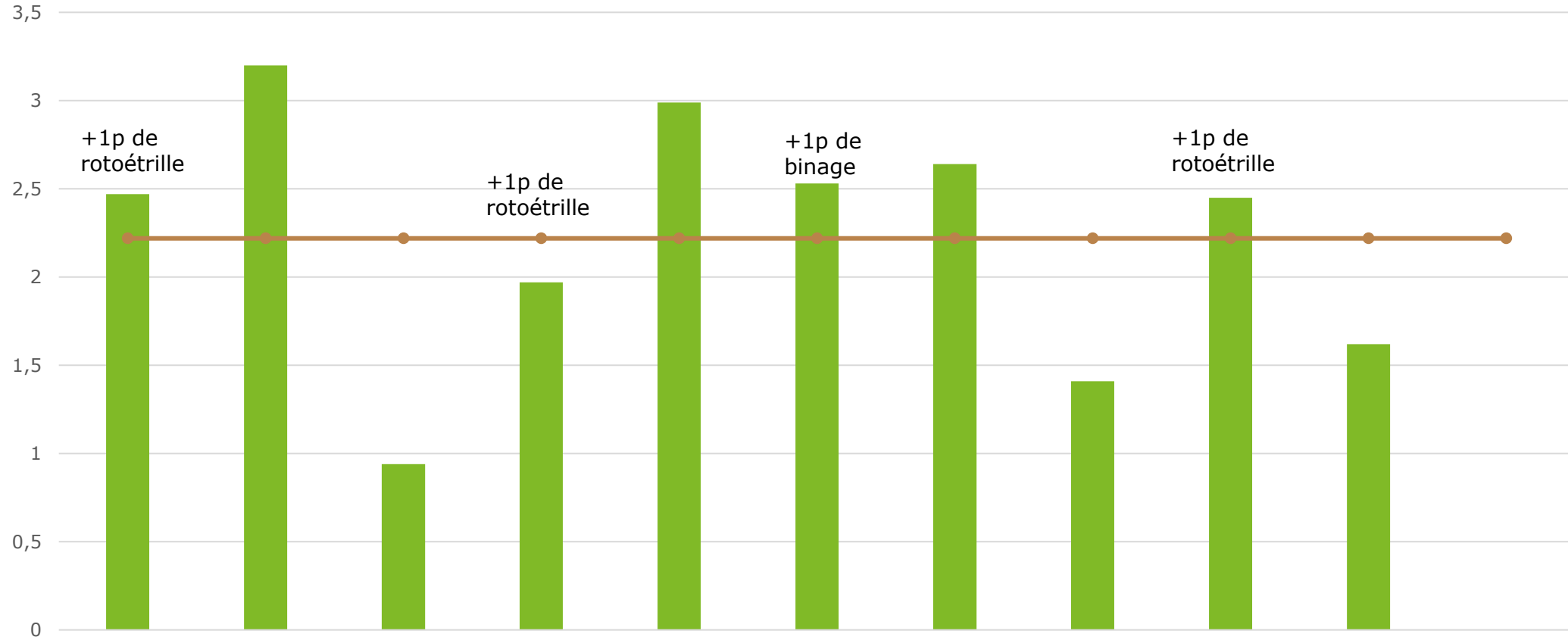


# Maïs

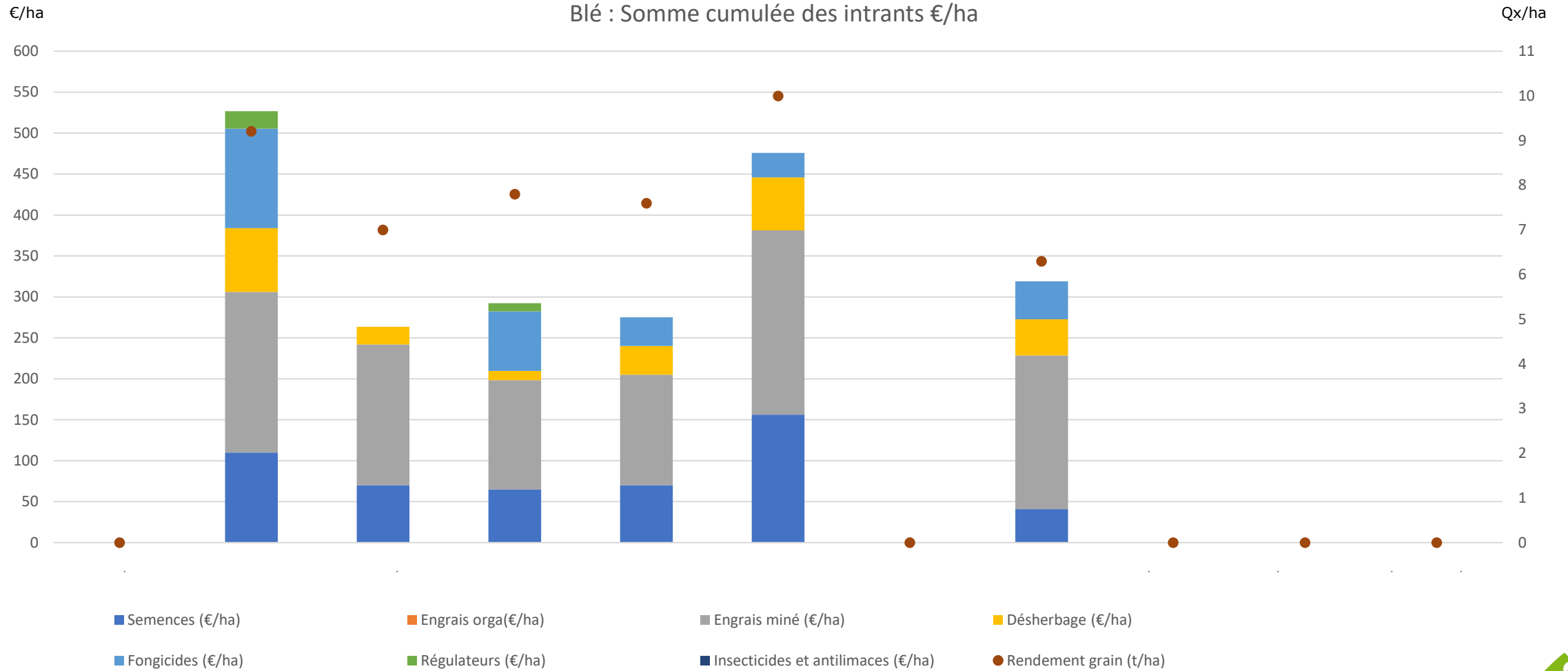


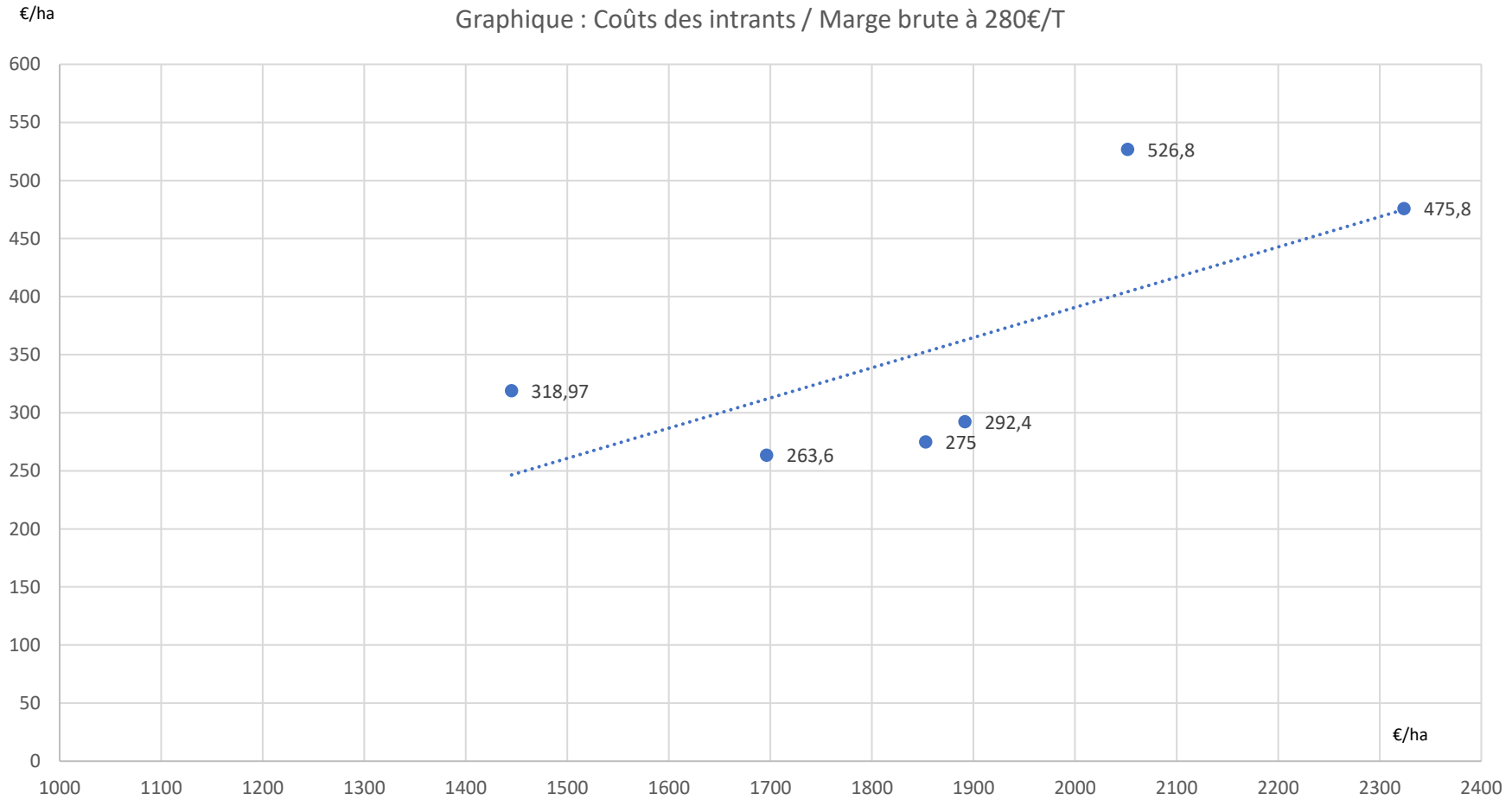
# Maïs

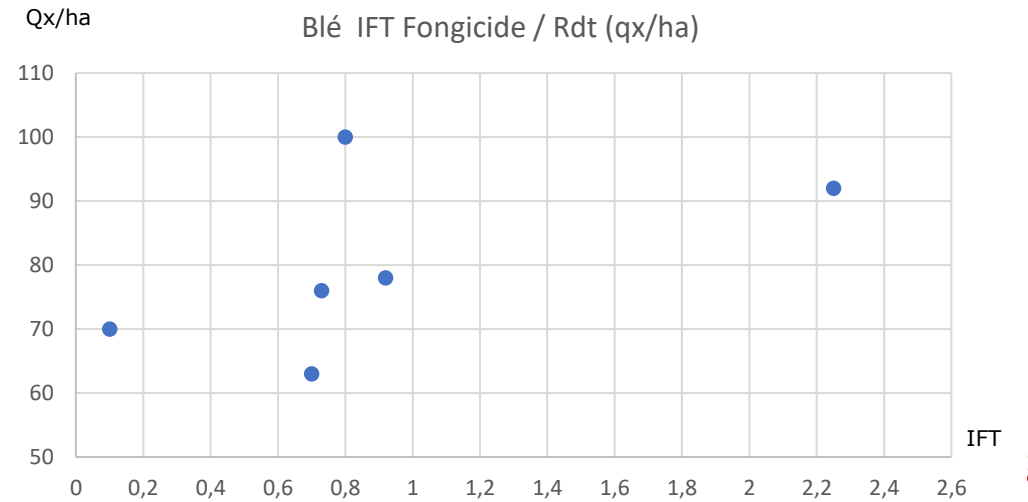
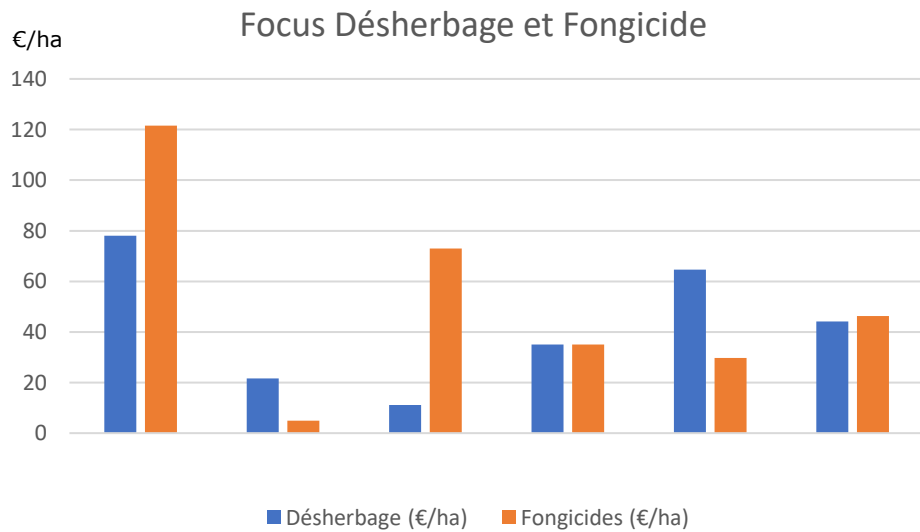
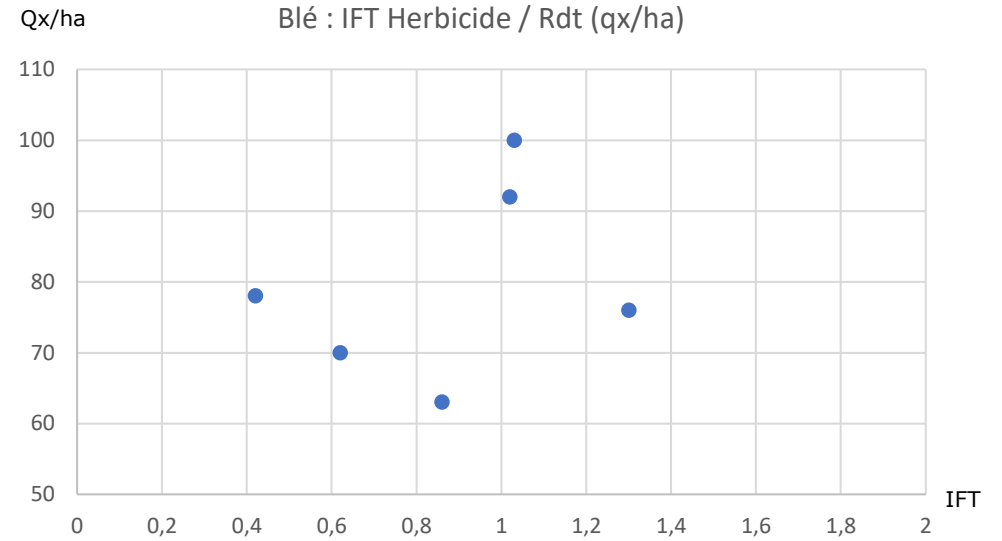
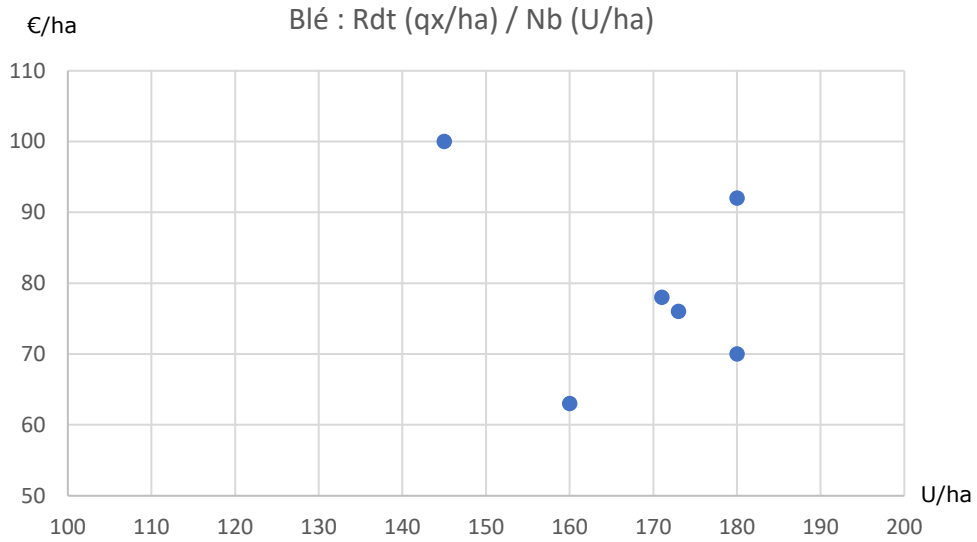
IFT Maïs 2022



# Blé

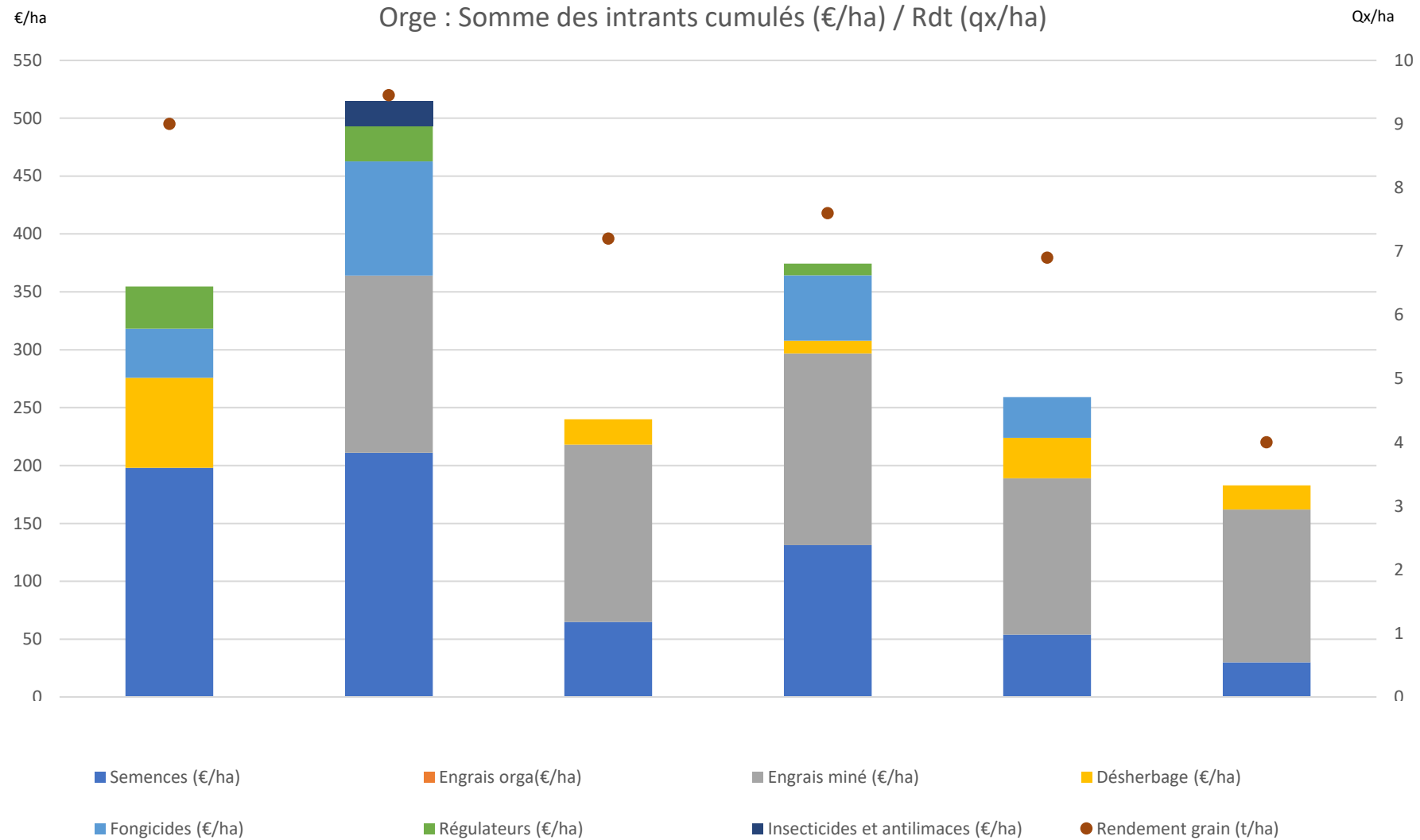




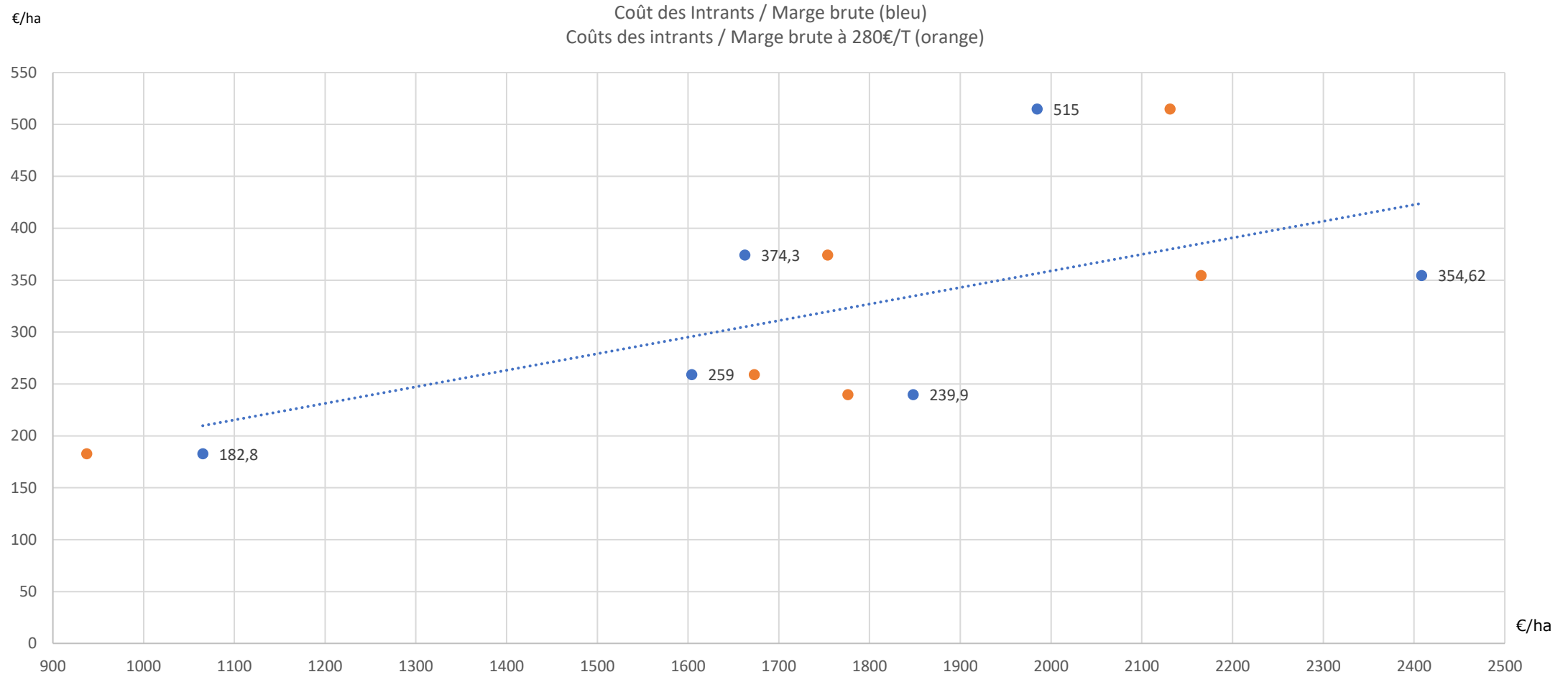




# Orge



# Orge



# Orge

