



5



5

# Confusion sexuelle



**Eudemis Lobesia  
botrana**

*L'effet préventif est répété à chaque période.*



**Effet préventif - 3**



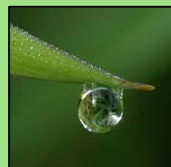
**Effet curatif 0**

Tox



0

Res



0

Eco



0

Aux



0



Période : 1 - 2



# EUCLID

Europe China Lever for IPM Demonstration





3



2

# Insecticide de biocontrôle (Ex *Bt*)



**Eudemis Lobesia  
botrana**

*Maximum 2 traitements / an.*



**Effet préventif 0**



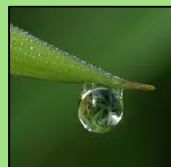
**Effet curatif - 4**

Tox



0

Res



0

Eco



2

Aux



0



Période : 2 - 6



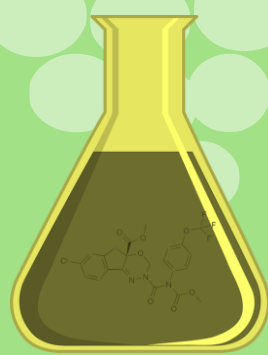
# EUCLID

Europe China Lever for IPM Demonstration





# Soufre



*Erysiphe necator*

*Coût et temps multipliés par 2 en cas de météo pluvieuse ou humide.*



©J-C. Gutner



*Effet préventif - 2*



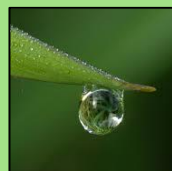
*Effet curatif 0*

Tox



2

Res



0

Eco



2

Aux



3



Période : 1-5



# EUCLID

Europe China Lever for IPM Demonstration





3(+1)



2

# Biostimulant Euclid Anti-mildiou



*Plasmopara viticola*  
*Erysiphe necator*



Coût +1 pour impacter les deux pathogènes.



Effet préventif

- 3



Effet curatif

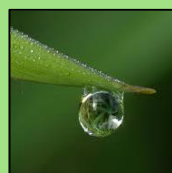
0

Tox



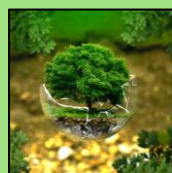
0

Res



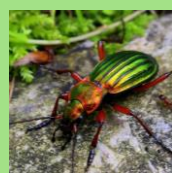
0

Eco



0

Aux



0



Période : 1-5



# EUCLID

Europe China Lever for IPM Demonstration





# Biostimulant Euclid Anti-Botrytis



*Botrytis cinerea*



*Effet préventif* - 3



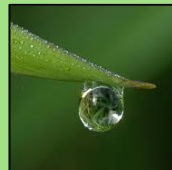
*Effet curatif* 0

Tox



0

Res



0

Eco



0

Aux



0



Période : 1-5



# EUCLID

Europe China Lever for IPM Demonstration





4



5

# Trichogrammes



Eudemis Lobesia  
botrana



*Effet préventif* - 3



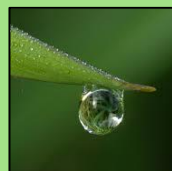
*Effet curatif* 0

Tox



0

Res



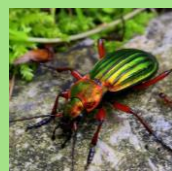
0

Eco



0

Aux



+2



Période : 2-5



# EUCLID

Europe China Lever for IPM Demonstration





# Fongicide anti-Botrytis



**Botrytis cinerea**

Maximum 2 traitements/an.  
Résidus x2 en période 5 ou 6.



**Effet préventif** 0



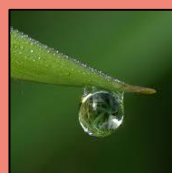
**Effet curatifs** - 4

Tox



+ 3

Res



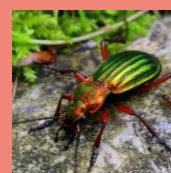
+ 4

Eco



+ 2

Aux



- 2



Période : 3-6



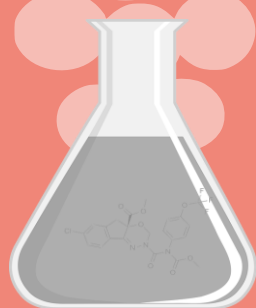
# EUCLID

Europe China Lever for IPM Demonstration





# Fongicide anti-Mildiou



*Plasmopara viticola*  
*Erysiphe necator*

Maximum 2 traitements/an.  
Coût + 1 pour les deux pathogènes.  
Résidus x2 en période 5 ou 6.



*Effet préventif* - 1



*Effet curatif* - 4

Tox



2

Res



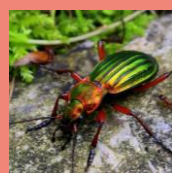
2

Eco



2

Aux



- 2



Période : 1-6



# EUCLID

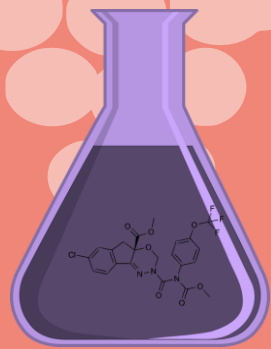
Europe China Lever for IPM Demonstration







# Acaricides



*Tetranychidae spp.*

Maximum 2 traitements/an.



*Effet préventif* 0



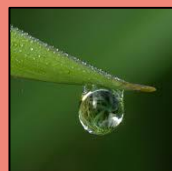
*Effet curatif* - 4

Tox



4

Res



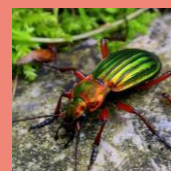
0

Eco



4

Aux



- 4



Période : 2-6



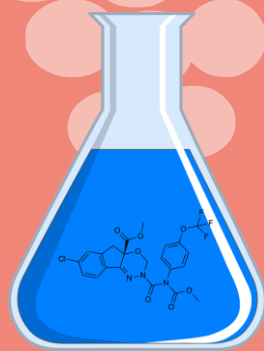
# EUCLID

Europe China Lever for IPM Demonstration





# Insecticide régulateur de croissance (ex Tebufenozide)



**Eudemis Lobesia  
botrana**

*Maximum 2 traitements/an.*



**Effet préventif - 3**



**Effet curatif - 1**

**Tox**



**0**

**Res**



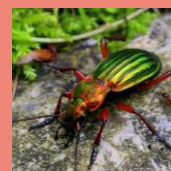
**0**

**Eco**



**2**

**Aux**



**0**



**Période : 2-5**



# EUCLID

Europe China Lever for IPM Demonstration





1



2

# *Insecticide neurotoxique (ex Indoxacarbe)*



**Eudemis Lobesia  
botrana**

*Maximum 2 traitements/an.*



*Effet préventif 0*



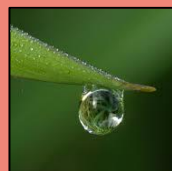
*Effet curatif - 4*

**Tox**



**3**

**Res**



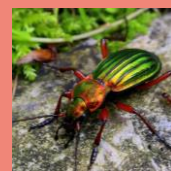
**0**

**Eco**



**3**

**Aux**



**- 3**



**Période : 2-6**



# EUCLID

Europe China Lever for IPM Demonstration





1



2

# *Insecticide neurotoxique (ex Pyréthroides)*



**Scaphoideus  
titanus**

*Maximum 2 traitements/an. Coût  
et temps x2 si météo pluvieuse.*



*Effet préventif 0*



*Effet curatif - 4*

**Tox**



**4**

**Res**



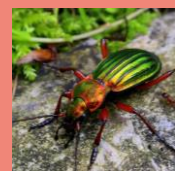
**0**

**Eco**



**4**

**Aux**



**- 4**



**Période : 2-6**



# EUCLID

Europe China Lever for IPM Demonstration





# Cuivre



*Plasmopara viticola*

*Coût et temps x2 si météo pluvieuse ou humide.  
Résidus x2 en période 5 ou 6.*



*Effet préventif - 2*



*Effet curatif 0*

Tox



3

Res



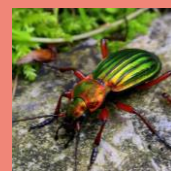
2

Eco



4

Aux



- 4



Période: 1-5



# EUCLID

Europe China Lever for IPM Demonstration





# Management écologique



*Tetranychidae* spp.  
*Eudemis Lobesia botrana*



**Effet préventif** - 2



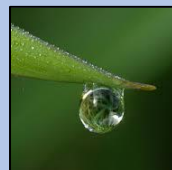
**Effet curatif** - 1

Tox



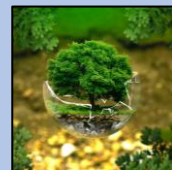
0

Res



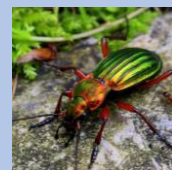
0

Eco



-1

Aux



+ 2



Période : 1-3



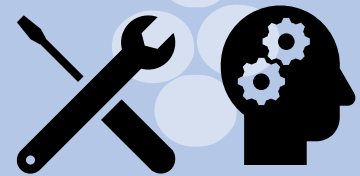
# EUCLID

Europe China Lever for IPM Demonstration



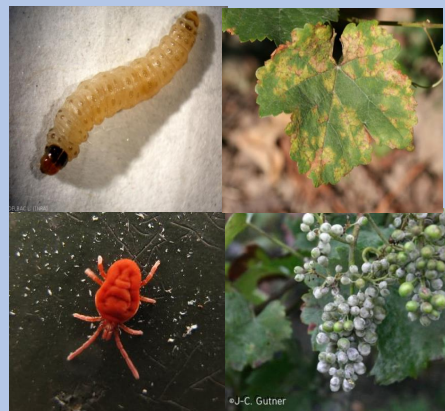


# Systeme d'aide à la décision pour la pulvérisation Euclid



*Tetranychidae spp.*  
*Eudemis Lobesia botrana*  
*Plasmopara viticola*  
*Erysiphe necator*

Se joue avec un produit de biocontrôle ou un pesticide. A un effet cumulatif.



**Effet préventif** 0



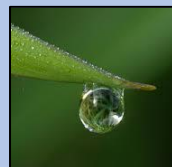
**Effet curatif** 0

Tox



-1

Res



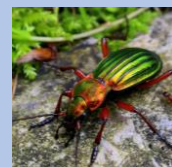
-1

Eco



-1

Aux



+1



Période : 1-6



# EUCLID

Europe China Lever for IPM Demonstration





+2



+1

# Pulvérisateur à faible dérive



*Tetranychidae spp.*  
*Scaphoideus titanus*  
*Eudemis Lobesia botrana*  
*Plasmopara viticola*  
*Erysiphe necator*  
*Botrytis cinerea*

Se joue avec un produit de biocontrôle ou un pesticide. A un effet cumulatif.



Effet préventif

0



Effet curatif

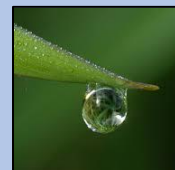
0

Tox



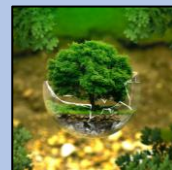
-1

Res



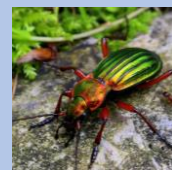
-1

Eco



-1

Aux



+1



Période : 1-6



# EUCLID

Europe China Lever for IPM Demonstration







3

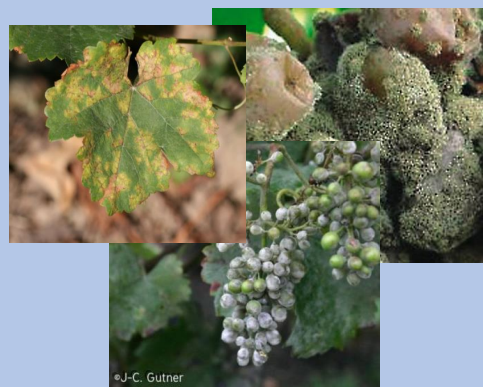


5

# Taille en vert



*Plasmopara viticola*  
*Erysiphe necator*  
*Botrytis cinerea*



**Effet préventif**

-2



**Effet curatif**

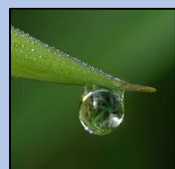
0

Tox



0

Res



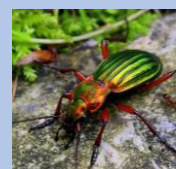
0

Eco



0

Aux



0



Période : 3-5



# EUCLID

Europe China Lever for IPM Demonstration





4



5

# Prophylaxie



*Plasmopara viticola*



**Effet préventif**

Période 2 - 3

Période 3 - 1



**Effet curatif**

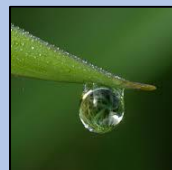
0

Tox



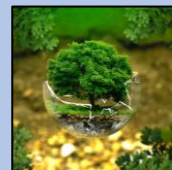
0

Res



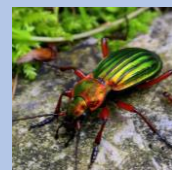
0

Eco



0

Aux



0



Période : 1



# EUCLID

Europe China Lever for IPM Demonstration





2



4

# Réduction de la vigueur de la vigne



*Tetranychidae* spp.  
*Plasmopara viticola*  
*Erysiphe necator*  
*Botrytis cinerea*



Effet préventif

-2



Effet curatif

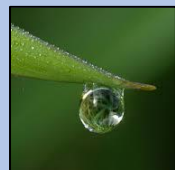
0

Tox



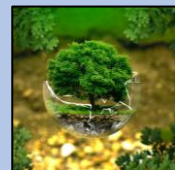
0

Res



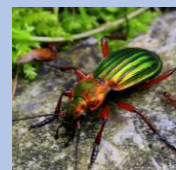
0

Eco



0

Aux



0



Période : 1-5



# EUCLID

Europe China Lever for IPM Demonstration

