



Mating disruption



Codling moth



Preventative effect - 3

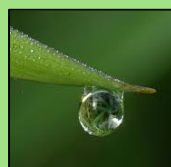
*The preventive effect
is repeated for each period*

Tox



0

Res



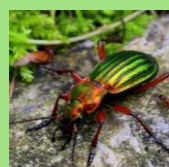
0

Eco



0

Ben



0



Crop cycle :  - 1 - 2





3



2

Biocontrol insecticide

Bacillus thuringiensis



Codling moth



Maximum 2 treatments/year.



Curative effect

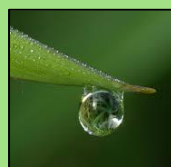
- 4

Tox



0

Res



0

Eco



+2

Ben



0

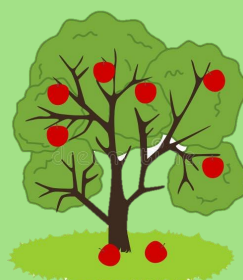


Crop cycle : 2 to 5





3



2

Granulovirus



Codling moth

*Maximum 2
treatments/year.*



Usable only



Preventative effect - 2

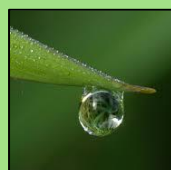


Tox



0

Res



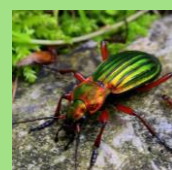
0

Eco



0

Ben



0

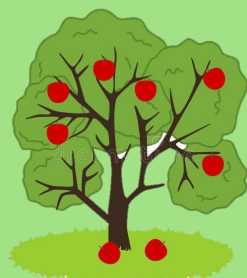


Crop cycle : 2 to 4





3



2

Nematods

Steinernema carpocapsae



Codling moth



Usable only



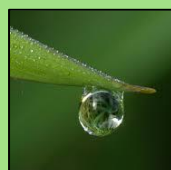
Preventative effect - 3

Tox



0

Res



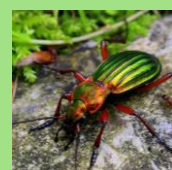
0

Eco



0

Ben

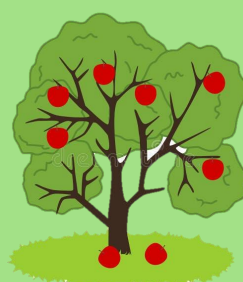


0



Crop cycle : 2 to 4





Sulphur

Mites



Powdery mildew
Apple scab



Usable except



Cost and Time x2 when



Preventative effect - 2



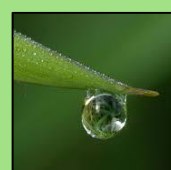
Curative effect -1

Tox



+1

Res



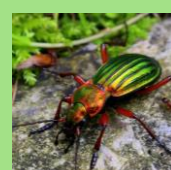
0

Eco



+2

Ben



+2



Crop cycle : 1 to 5





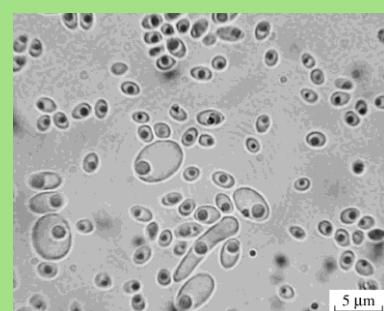
3



2

Microorganisms

B.amyloliquefaciens



Storage diseases



Usable only



Preventative effect - 2

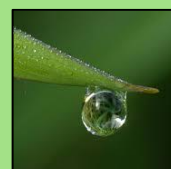


Tox



0

Res



0

Eco



0

Ben



0



Crop cycle : 3 - 4





3



2

Microorganisms

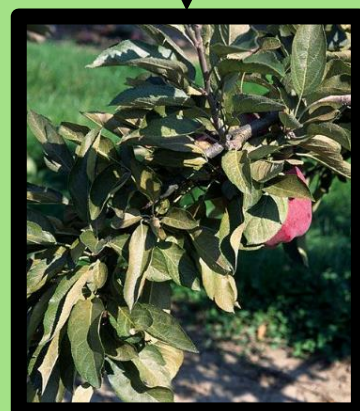
B.bassiana



Mites



Usable only



Curative effect

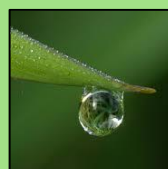
- 2

Tox



0

Res



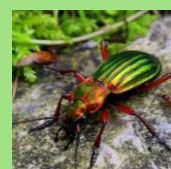
0

Eco



0

Ben



0



Crop cycle : 2 to 5



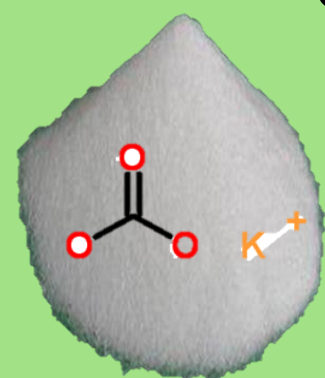


3



2

Potassium hydrogen carbonate



Apple scab
Powdery mildew

Usable except



Preventative effect - 2



Curative effect -1
Only in association with sulphur

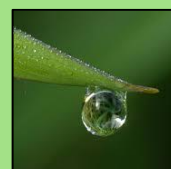


Tox



0

Res



0

Eco



0

Ben



0



Crop cycle : 1 to 5





3



2

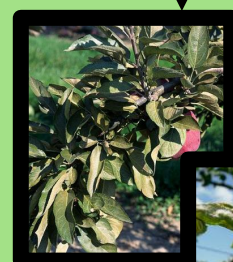
Essential oil

Sweet orange



Powdery mildew
Mites

Usable only



Curative effect

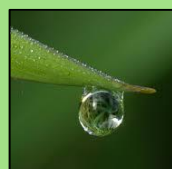
-3

Tox



+2

Res



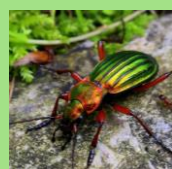
0

Eco



+2

Ben



+2



Crop cycle : 1 to 4





1



2

Paraffin oil



Mites



Preventative effect

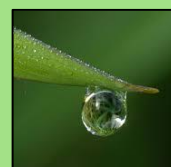
Prevents primary installation

Tox



+2

Res



0

Eco



0

Ben



0



Crop cycle :





Rape oil



Mites



Preventative effect

Prevents primary installation

Tox



0

Res



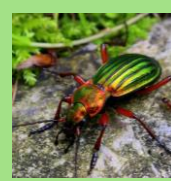
0

Eco



0

Ben



0

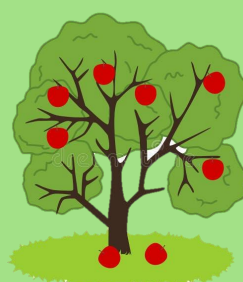


Crop cycle :





3



2

Vegetal oils

Clove, Geranium, Thyme



Storage diseases



Usable only



Curative effect

-2

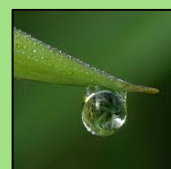


Tox



+2

Res



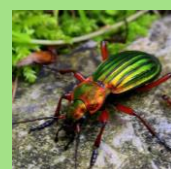
0

Eco



+1

Ben



+1



Crop cycle : 4 - 5





3



2

Elicitors

Defense stimulators



Powdery mildew
Apple scab
Storage disease



Usable only



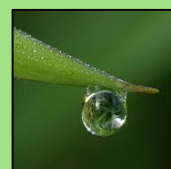
Preventative effect -2

Tox



0

Res



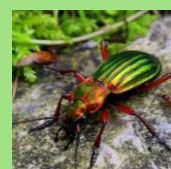
0

Eco



0

Ben



0



Crop cycle : 1 to 4





1



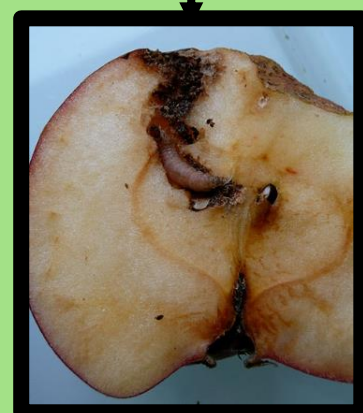
2

Basic substances

Saccharose - Fructose



Codling moth



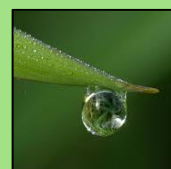
Preventative effect -1

Tox



0

Res



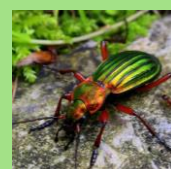
0

Eco



0

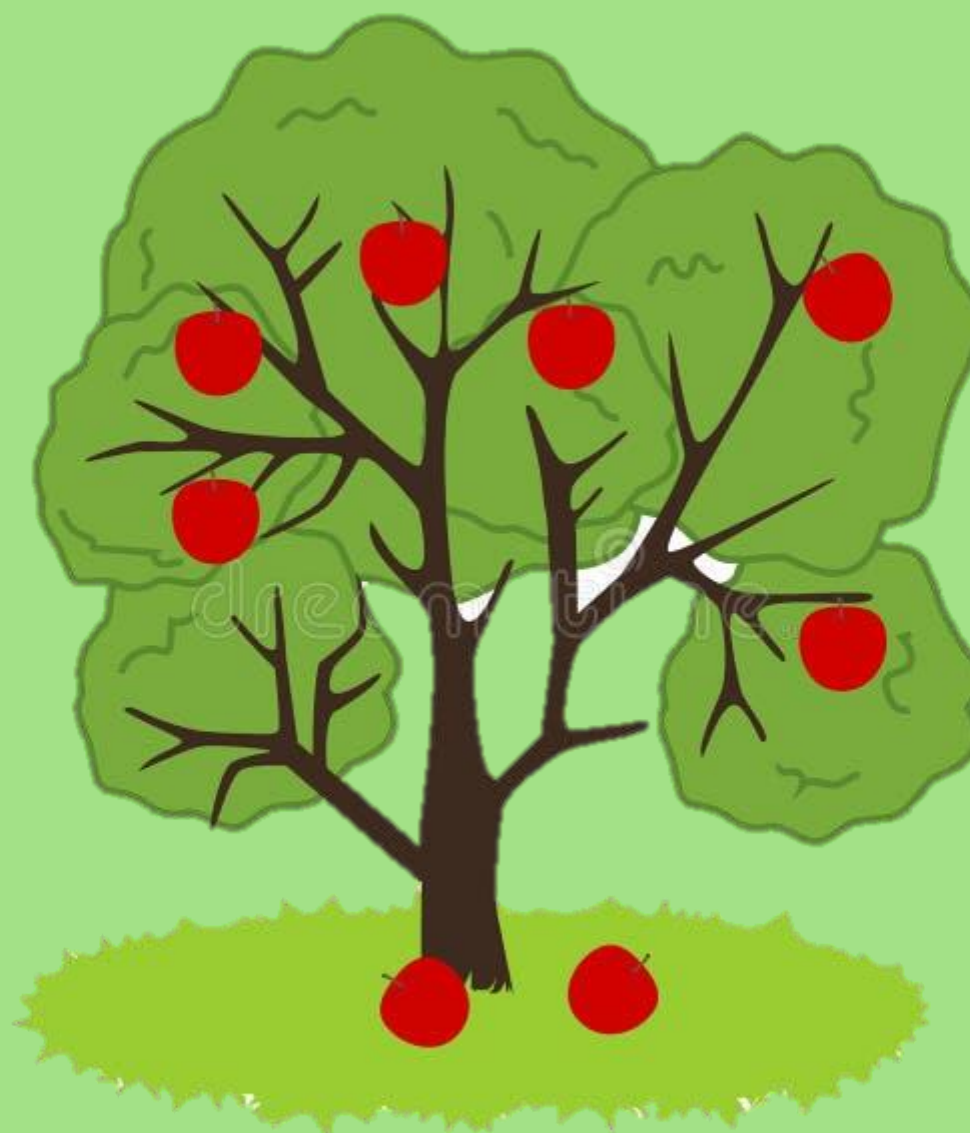
Ben



0



Crop cycle : 1 to 3





1

Per pest



2

Basic substances

Equisetum - Salix



*Powdery mildew
Apple scab*



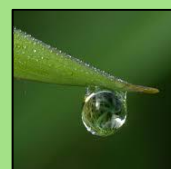
Preventative effect -1

Tox



0

Res



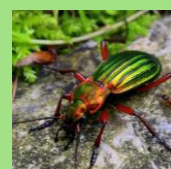
0

Eco



0

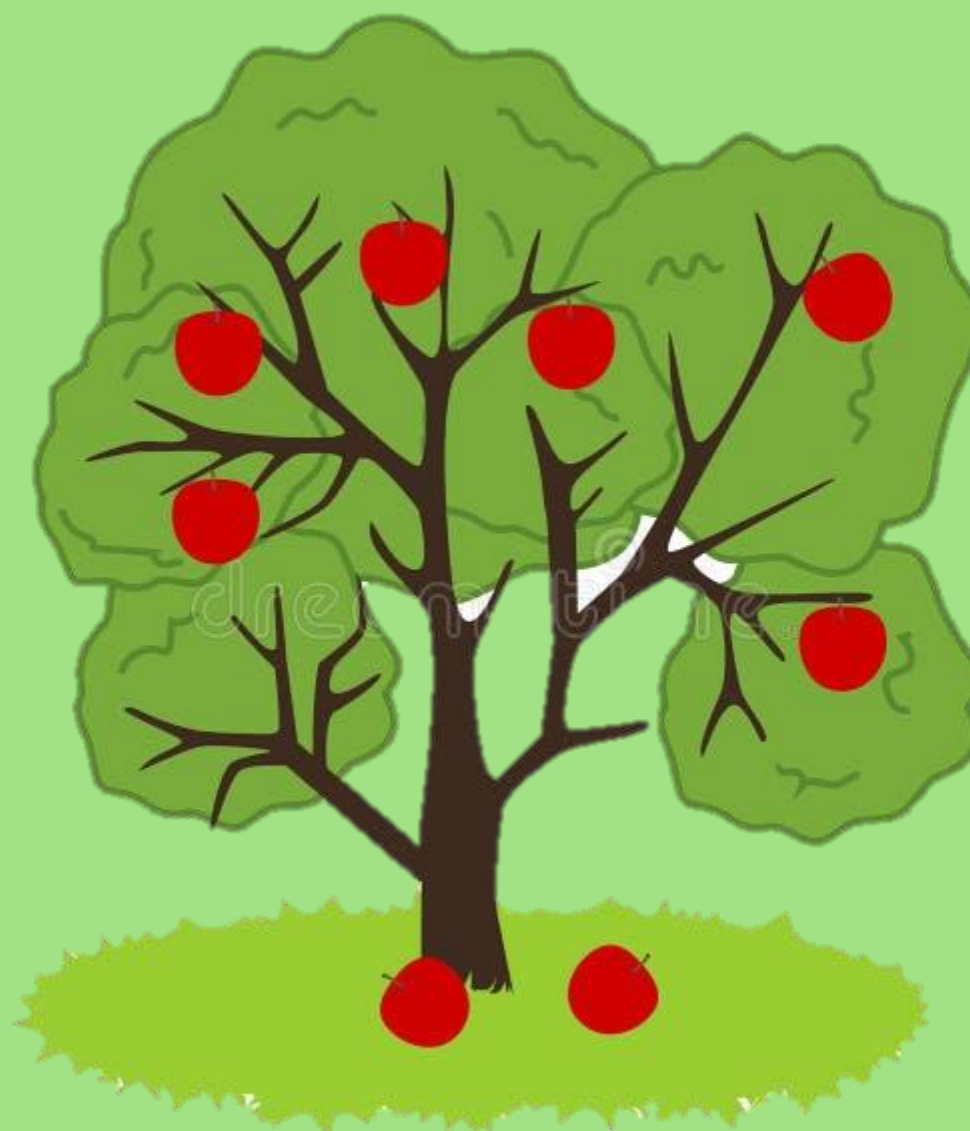
Ben



0



Crop cycle : 2 to 4





1

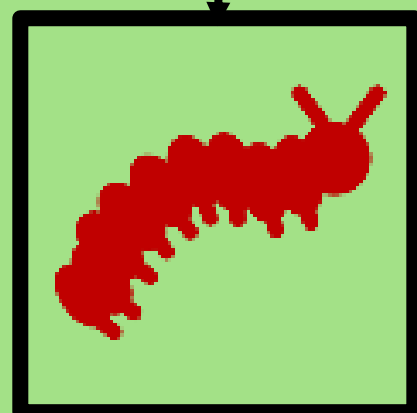
Per pest



2

Basic substances

Urtica - Talc



Codling moth

3 – 4

Aphids

2 – 4

Mites

2 – 4



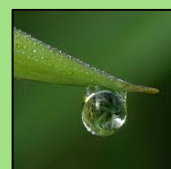
Preventative effect -1

Tox



0

Res



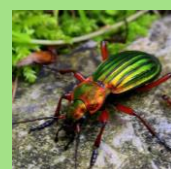
0

Eco



0

Ben



0

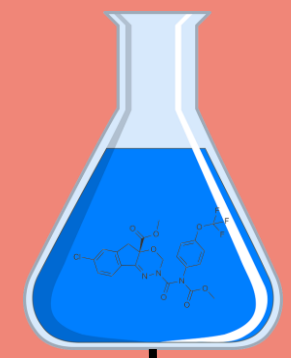


Crop cycle : 2 to 4 > **depending on pest**





Copper



Apple scab



Cost and Time x2 when



x2 in periods 4 & 5



Preventative effect - 2



Curative effect -1



Tox



+2

Res



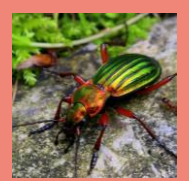
+ 2

Eco



+ 3

Ben



+2



Crop cycle : 1 to 5



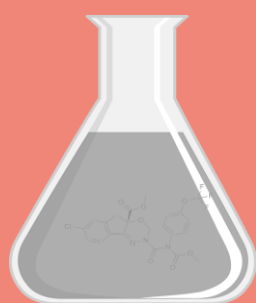


2

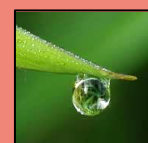


2

Storage diseases fungicide



Storage diseases



x2 in period 5



Preventative effect - 1



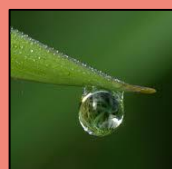
Curative effect - 4

Tox



+ 2

Res



+ 3

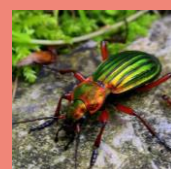


Eco



+ 2

Ben



+ 2

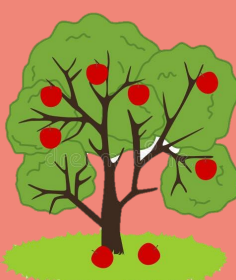


Crop cycle : 4 - 5





2 (+1*)



2

Airborne diseases fungicide



Apple scab
Powdery mildew



*for two pathogens
Maximum 2 treatments/year
x2 in periods 4 and 5



Preventative effect - 1



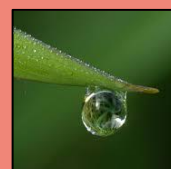
Curative effect - 4

Tox



+ 2

Res



+ 2

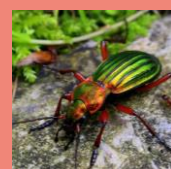


Eco



+ 2

Ben



+ 2



Crop cycle : 1 to 5



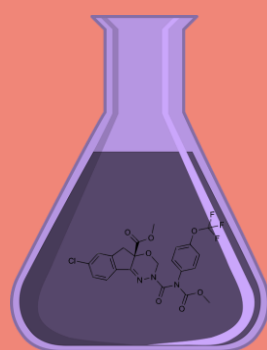


2



2

Acaricides



Mites

Maximum 2
treatments/year



Curative effect

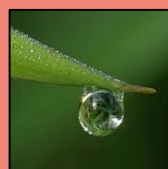
- 4

Tox



+4

Res



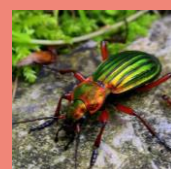
0

Eco



+ 4

Ben



+ 4



Crop cycle : 2 to 5



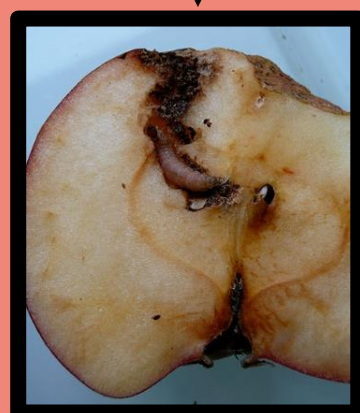
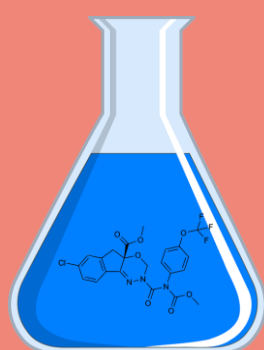


2



2

Growth regulator insecticide (Tebufenozide)



Codling moth

*Maximum 2
treatments/year*



Preventative effect - 3



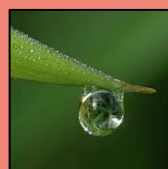
Curative effect - 1

Tox



0

Res



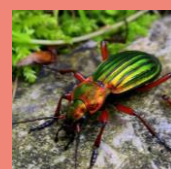
0

Eco



+ 2

Ben



+1



Crop cycle : 2 to 5



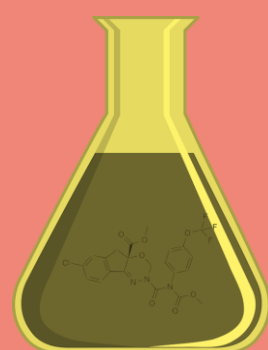


2



2

Aphicides (flonicamid - spirotetramat)



Aphids

Maximum 2
treatments/year



Curative effect

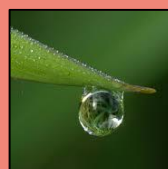
- 3

Tox



+2

Res



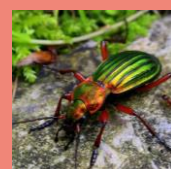
0

Eco



+ 2

Ben



+ 3



Crop cycle : 1 to 5





1



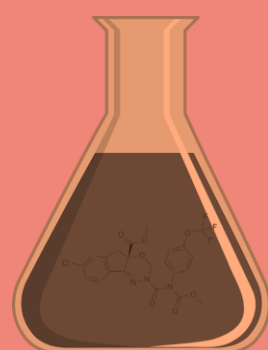
2



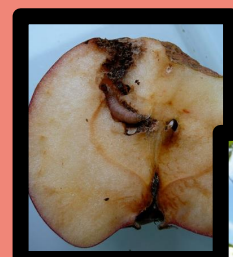
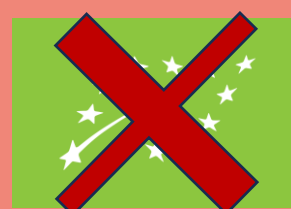
Polyvalent insecticide

Pyrethroids

Aphids
Codling moth



Maximum 2 treatments/year
Cost and Time x2 when



Curative effect

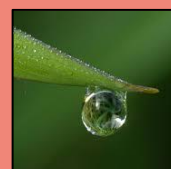
- 4

Tox



+4

Res



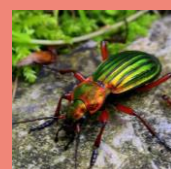
0

Eco



+ 4

Ben



+ 4



Crop cycle : 2 to 5





3

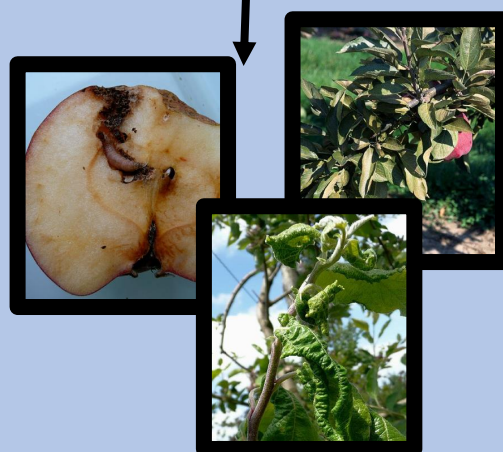


3

Ecological management



Aphids
Codling moth
Mites



Preventative effect - 2



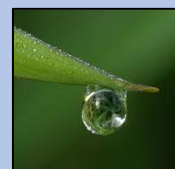
Curative effect - 1

Tox



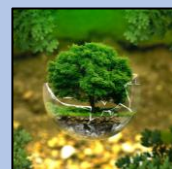
0

Res



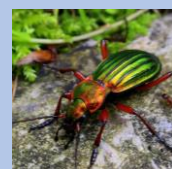
0

Eco



-1

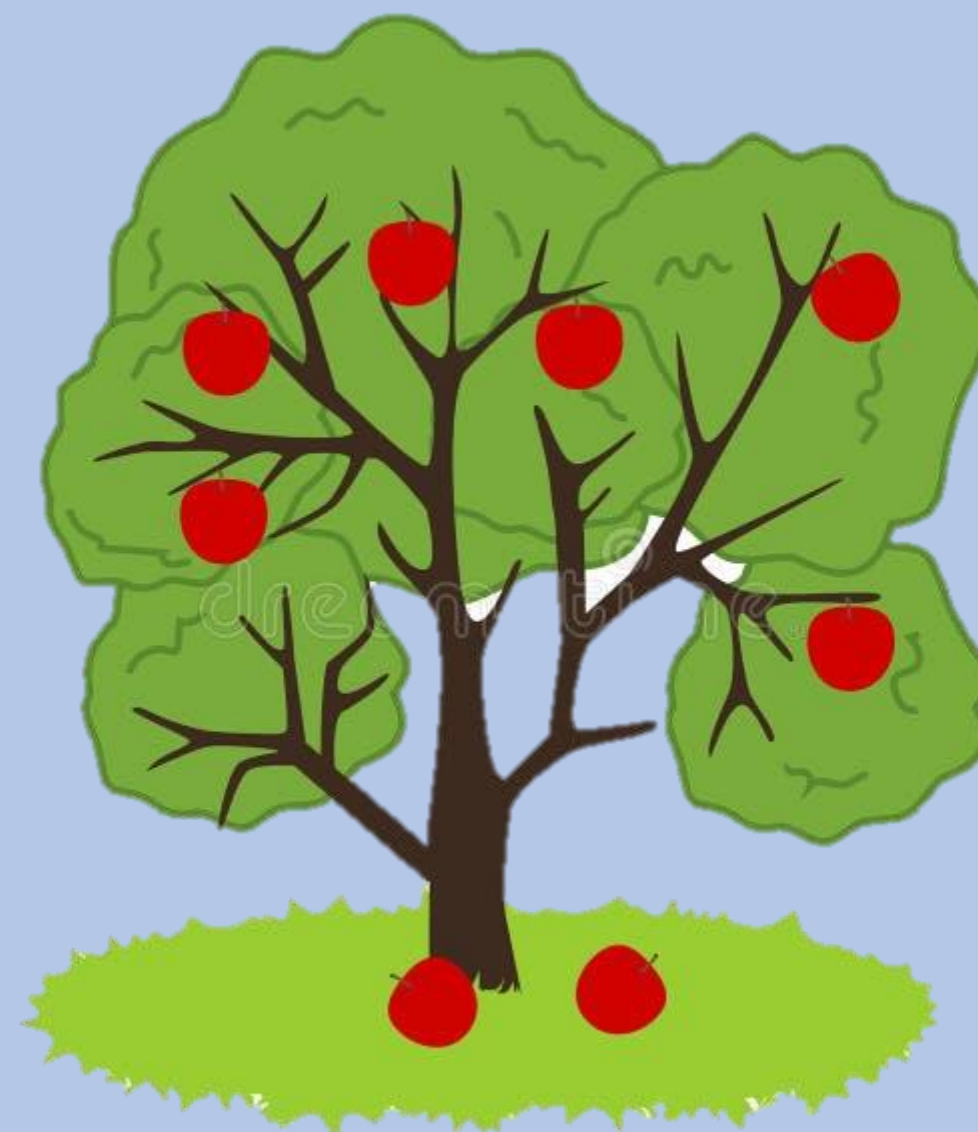
Ben



-2



Crop cycle :  - 1 - 2





+1

For each pest



+1

Spraying Decision Support System



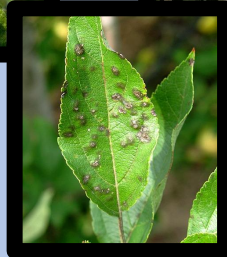
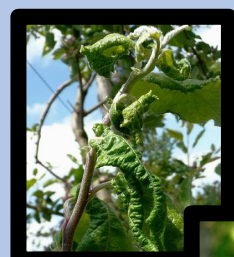
Aphids

Apple scab

Mites



*Play with pesticide or biocontrol
product with cumulative effects.*

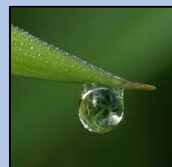


Tox



-1

Res



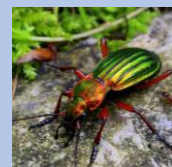
-1

Eco



-1

Ben



-1



Crop cycle : 1 to 5





+2



+1

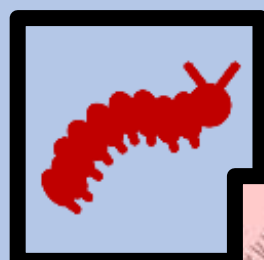
Low drift sprayer



All



Play with pesticide or biocontrol product with cumulative effects.

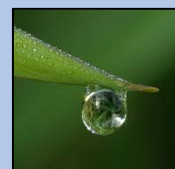


Tox



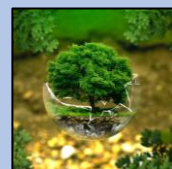
-1

Res



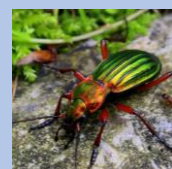
-1

Eco



-1

Ben



-1

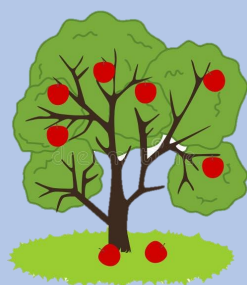


Crop cycle : 1 to 5





3



5

Green pruning



Apple scab
Powdery mildew
Storage disease



Maximum 2 reductions
or pruning / year
Not 2 periods in a row



Preventative effect -2



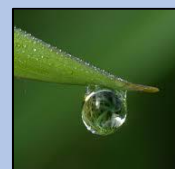
Curative effect -1

Tox



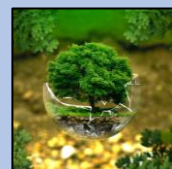
0

Res



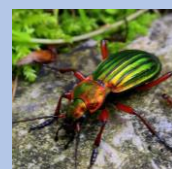
0

Eco



0

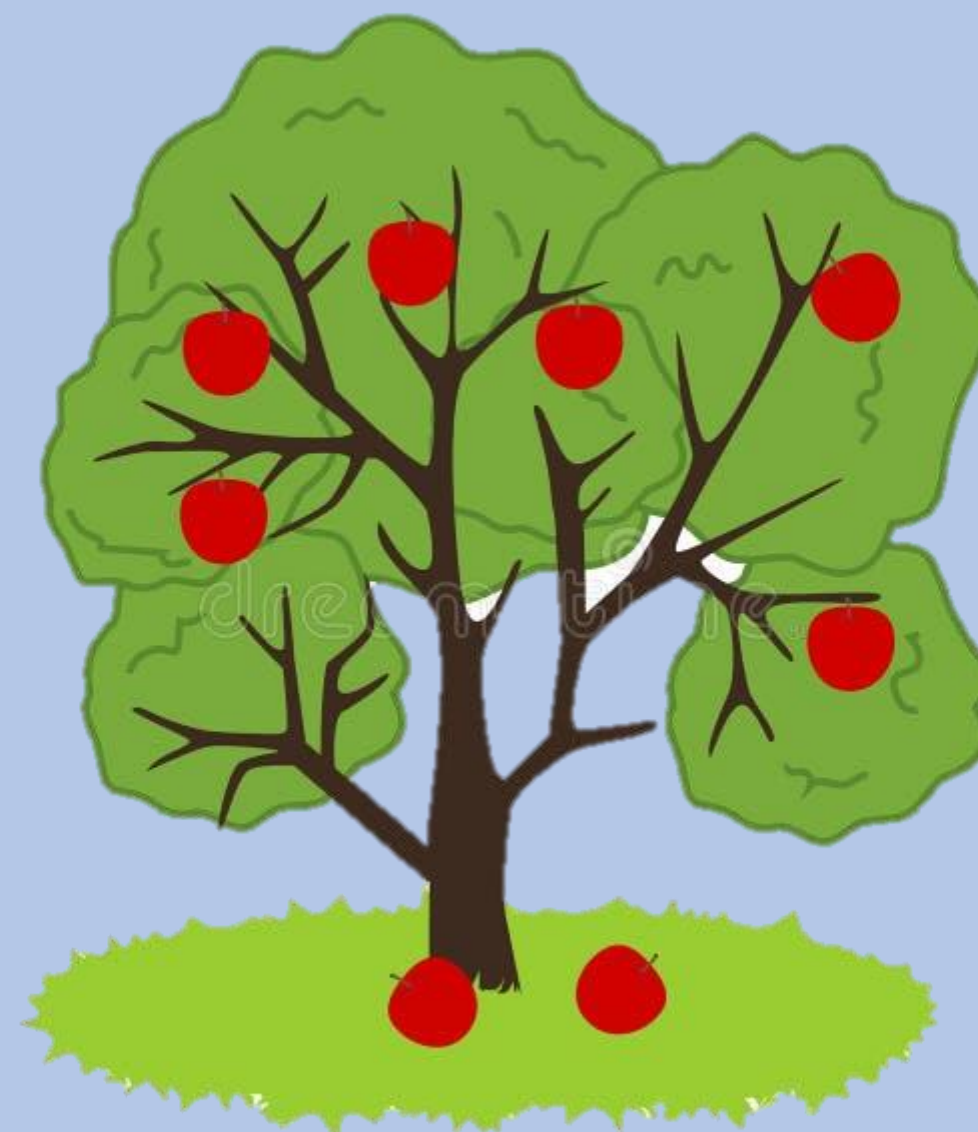
Ben



0



Crop cycle : 3 to 5





Reducing vigour of the tree



Aphids
Mites
Powdery mildew
Storage disease



*Maximum 2 reductions
or pruning / year
Not 2 periods in a row*



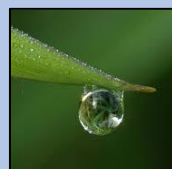
Preventative effect -2

Tox



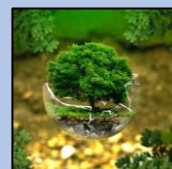
0

Res



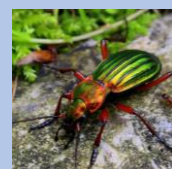
0

Eco



0

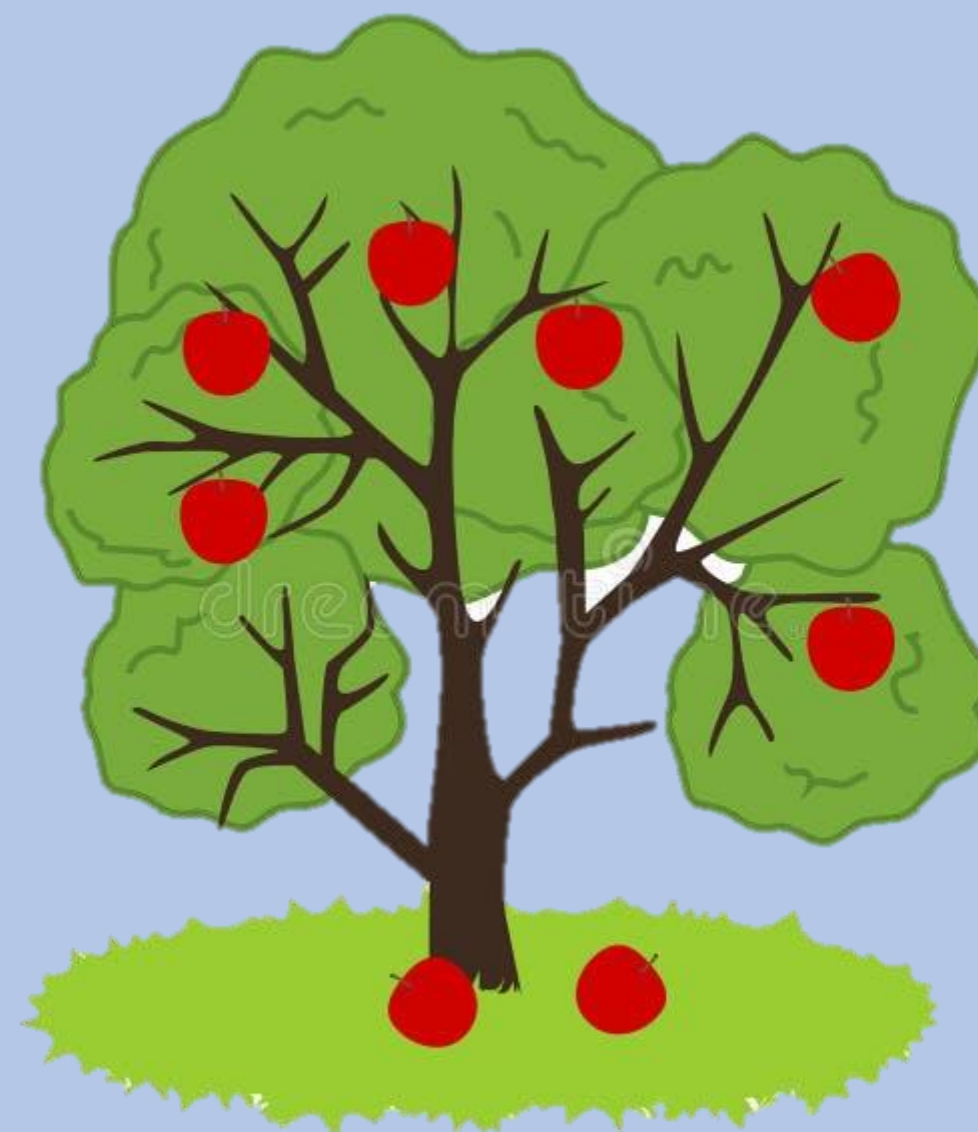
Ben



0

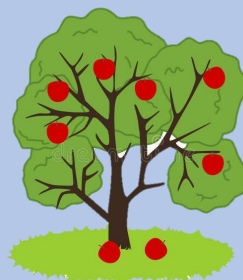


Crop cycle : 1 to 4





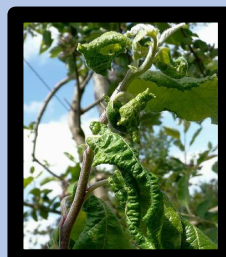
1



2

Rock powder

Kaolinite



Aphids



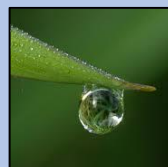
Preventative effect -2

Tox



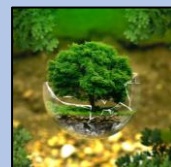
+1

Res



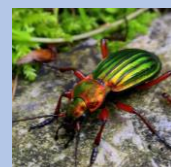
0

Eco



0

Ben



0



Periods : 3 & 4





2



1

Decision Support System (DSS)



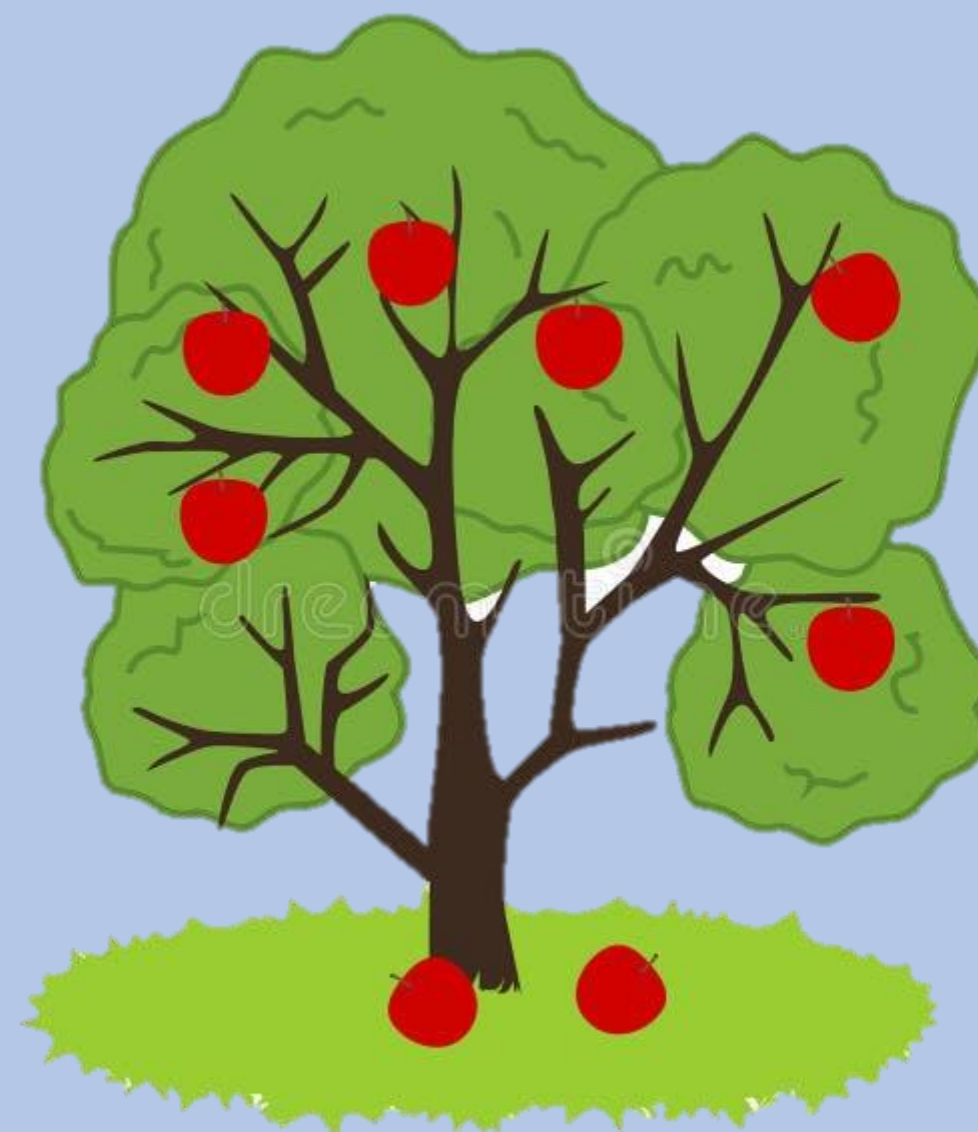
Aphids
Apple scab
Mites



*Give the possibility to play
“Preventive measures”
next turn after drawing
a weather card*

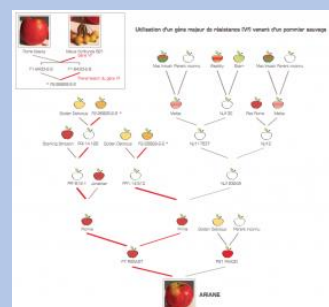


Crop cycle : 1 to 4





Resistant variety



Apple scab



Preventative effect

- At each period – 3
- You have to combine with other solutions twice during the season to keep the efficacy > if not - 2

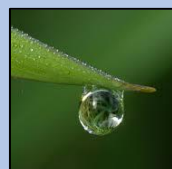


Tox



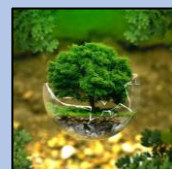
0

Res



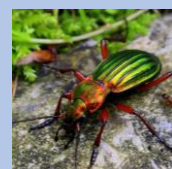
0

Eco



0

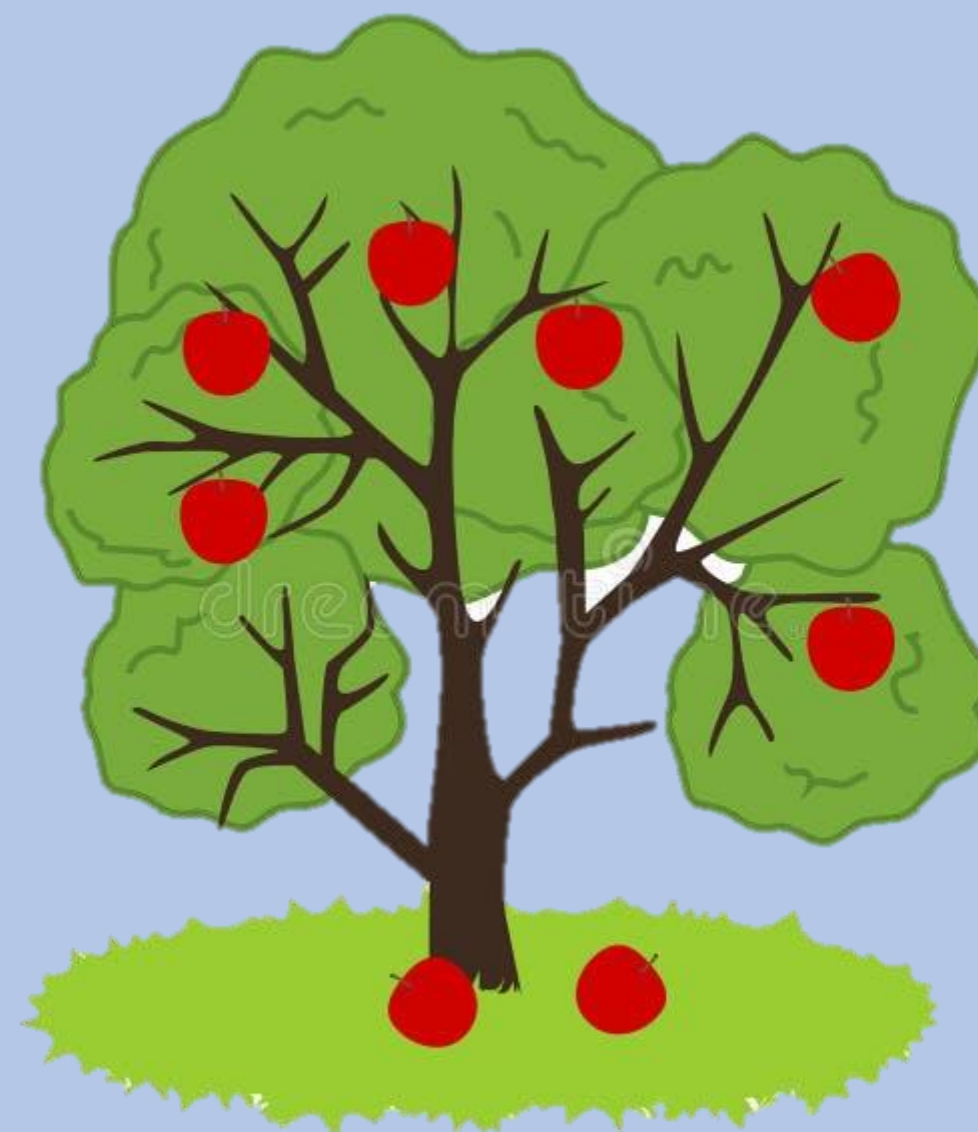
Ben

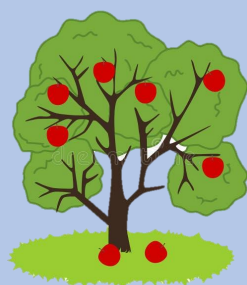


0



Crop cycle :





6 with nets

Anti-rain cover



Apple scab



Mites +1
At each period



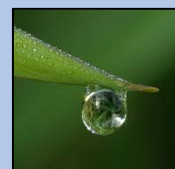
Preventative effect -2
At each period

Tox



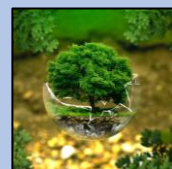
0

Res



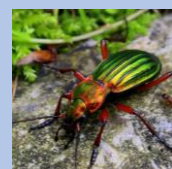
0

Eco



0

Ben



0



Crop cycle :





2



3

Leaf pick-up



Apple scab



Preventative effect

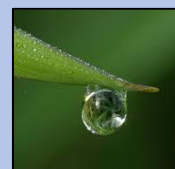
Prevents primary installation

Tox



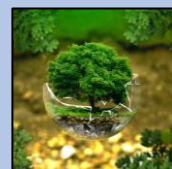
0

Res



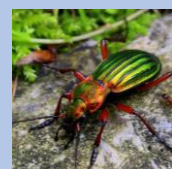
0

Eco



0

Ben



0

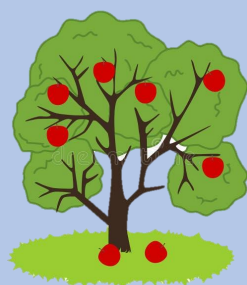


Crop cycle :





4



4

6 with AR cover

Nets



Codling moth



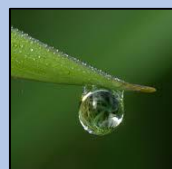
Preventative effect
At each period - 2

Tox



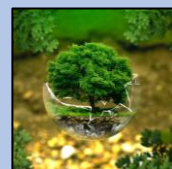
0

Res



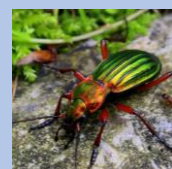
0

Eco



0

Ben



+1

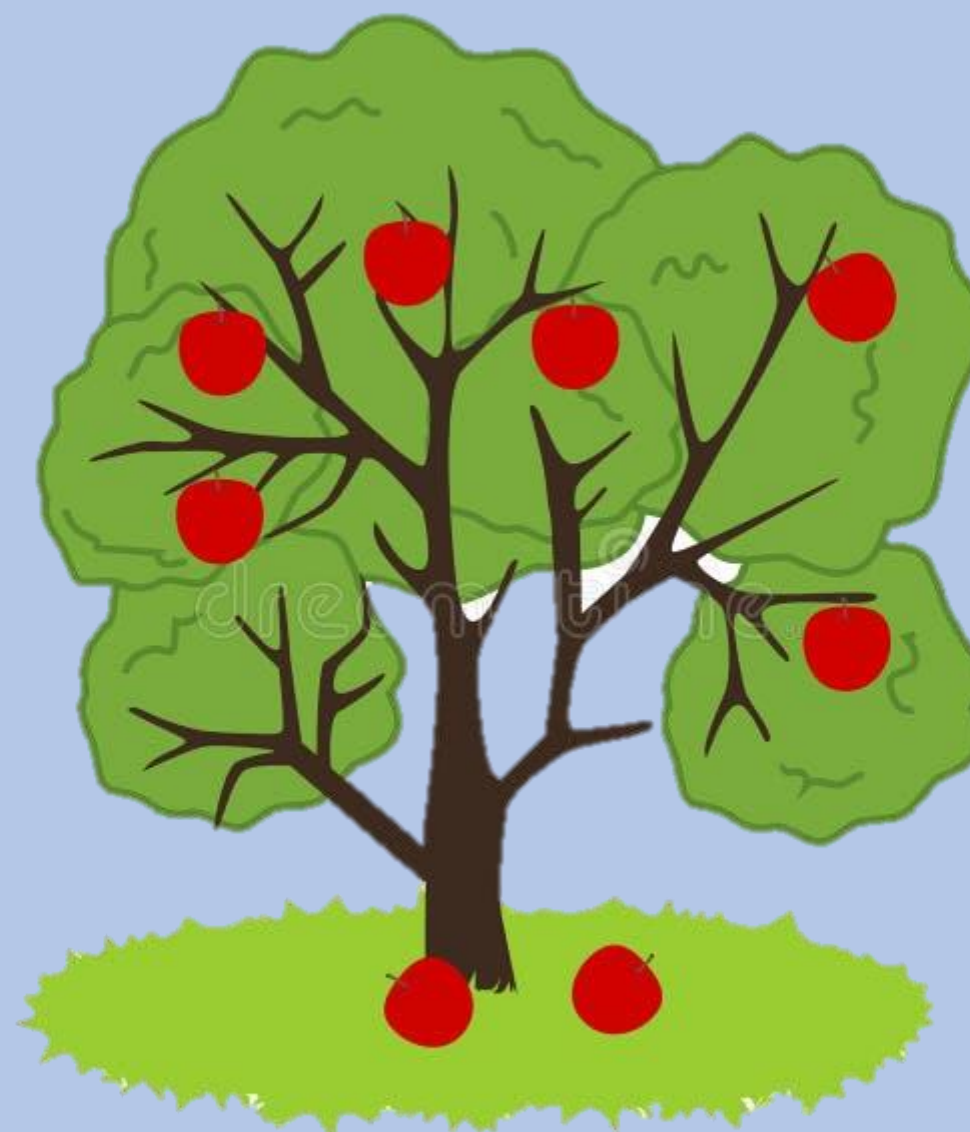
At each period



Crop cycle :

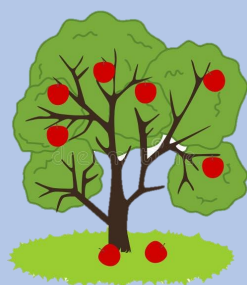


1





3



2

Eco-Grazing



Codling moth



Preventative effect -2



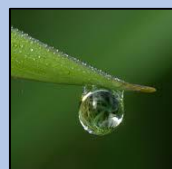
Curative effect -1

Tox



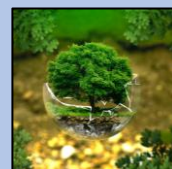
0

Res



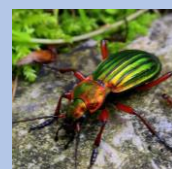
0

Eco



0

Ben



0

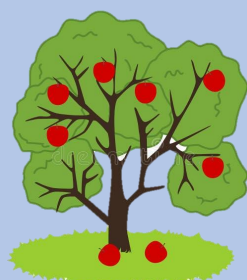


Crop cycle : 1 to 3





1



2

Corrugated cardboard strips



Codling moth



Preventative effect

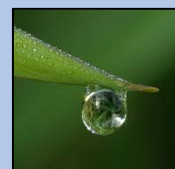
Prevents primary installation

Tox



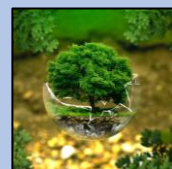
0

Res



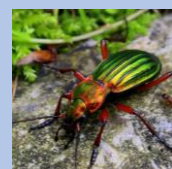
0

Eco



0

Ben



0



Crop cycle :





3



3

AEI > birds & chiropterans



Codling moth



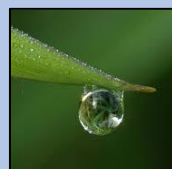
Preventative effect -2

Tox



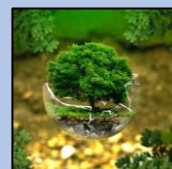
0

Res



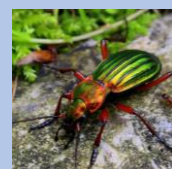
0

Eco



-1

Ben



-1



Crop cycle :





+1



0

Adjuvant



All



*Play with biocontrol product to
be applicable by dry weather*



Crop cycle : 1 to 5





+2



0

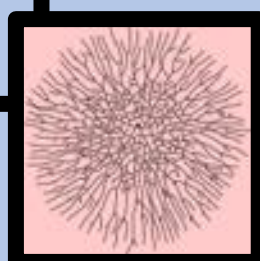
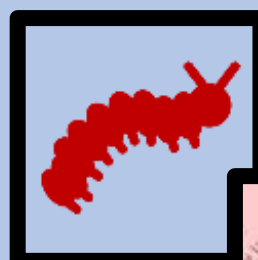
Biostimulant



All



Preventative effect



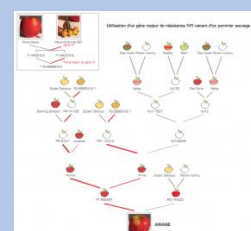
Alone if risk ≤ 1 and pressure is in the light yellow zone

-1



Can increase the efficiency of microorganisms or natural substances

-1

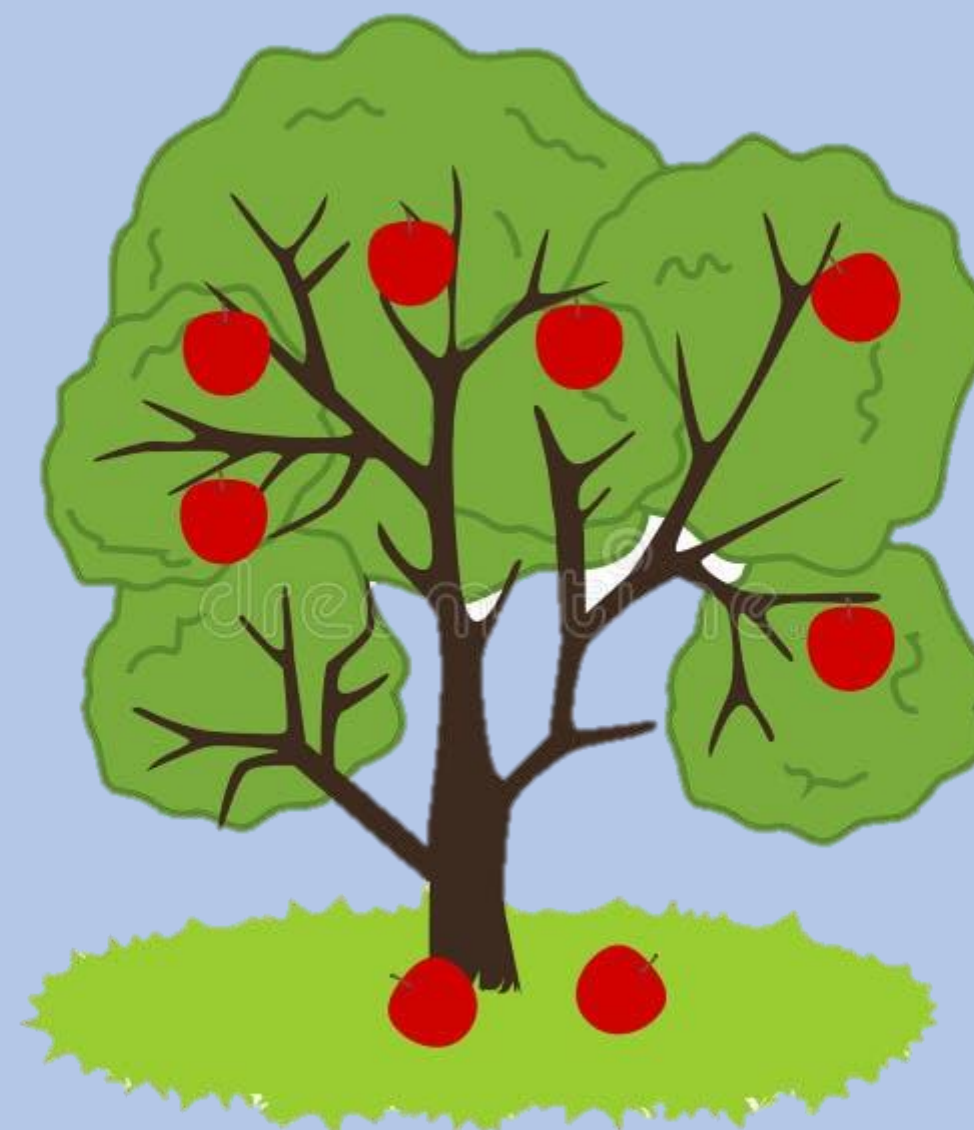


maintains the durability of the variety resistance over time



Crop cycle : 1 to 4

1 solution





2



1

Augmentorium



Codling moth



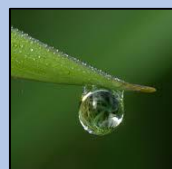
Preventative effect - 1
for 2 periods

Tox



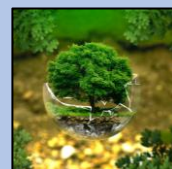
0

Res



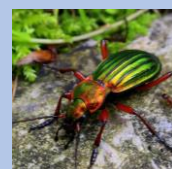
0

Eco



0

Ben



-1

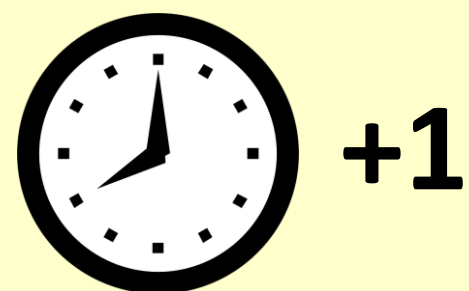


Crop cycle :  1 to 4






FWF ***(Farm Work Firm)***



*The additional unit of time
must be spent during the period*

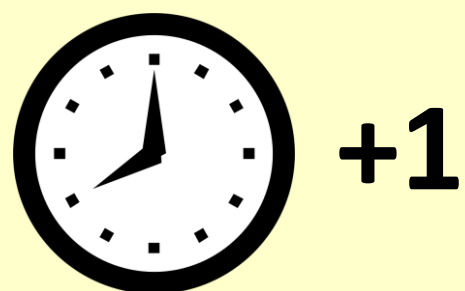


Crop cycle :  1 to 5





Associated treatments



You win 1 time unit when you spray with 2 biocontrol



Crop cycle : 1 to 5





**Biocontrol product
+ 1/2 dose of copper**



 **Apple scab**

 **Preventative effect**

+1 Copper efficacy is low



+1

*You win 1 time unit when you
spray this associations*

And you reduce impact of copper

Tox



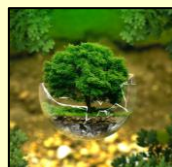
-1

Res



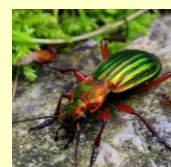
-1

Eco



-1

Ben



-1



Periods : 1 to 5

