



Mating disruption



Codling moth



Preventative effect - 3

*The preventive effect
is repeated for each period*

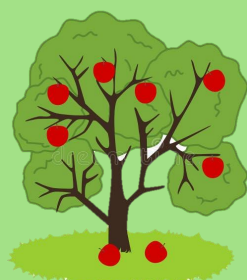


0



Crop cycle :



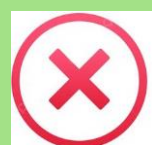


Biocontrol insecticide

Bacillus thuringiensis



Codling moth



Maximum 2 treatments/year.



Curative effect

- 4



1



Crop cycle : 3 to 5





Granulovirus



Codling moth

*Maximum 2
treatments/year.*



Usable only



Preventative effect - 2



0



Crop cycle : 3 - 4





Nematods

Steinernema carpocapsae



Codling moth



Usable only



Preventative effect - 3



0



Crop cycle : 3 - 4





1

Sulphur

Mites



Powdery mildew

Apple scab



Usable except



Cost and Time x2 when



Preventative effect - 2



Curative effect -1



3



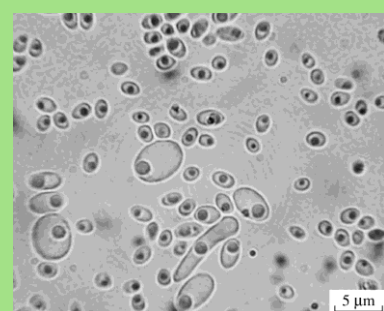
Crop cycle : 3 to 5





Microorganisms

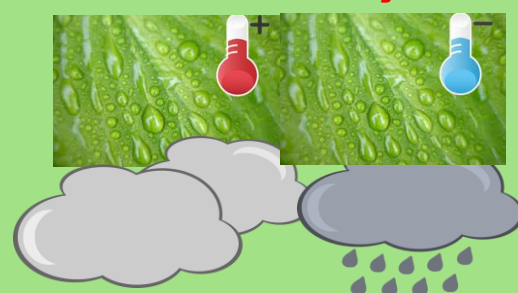
B.amyloliquefaciens



Storage diseases



Usable only



Preventative effect - 2



Crop cycle : 3 - 4



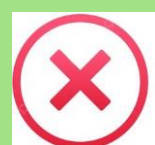


Microorganisms

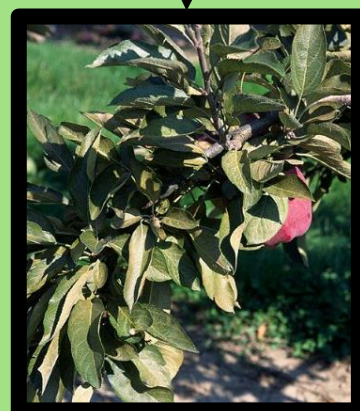
B.bassiana



Mites



Usable only



Curative effect

- 2

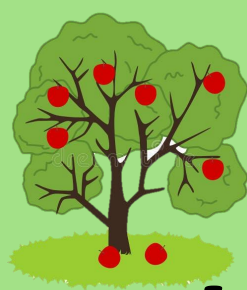


0

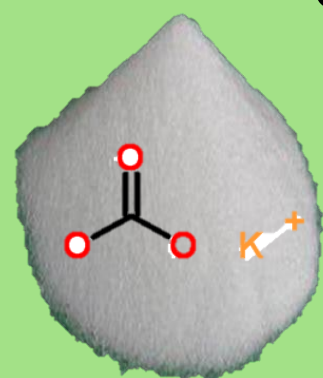


Crop cycle : 2 to 5





Potassium hydrogen carbonate



Apple scab
Powdery mildew

Usable except



Preventative effect - 2



Curative effect -1
Only in association with sulphur



Crop cycle : 3 to 5





2

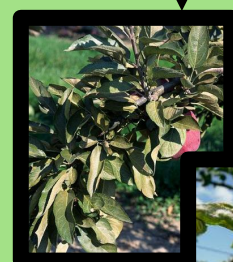
Essential oil

Sweet orange



Powdery mildew
Mites

Usable only



Curative effect

-3



3



Crop cycle : 3 - 4





Paraffin oil



Mites



Preventative effect

*Prevents primary
installation*



Crop cycle :





2

Rape oil



Mites



Preventative effect

**Prevents primary
installation**

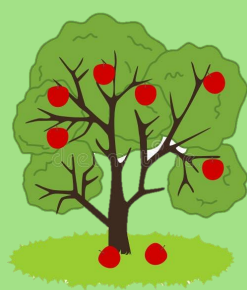


0



Crop cycle :





Vegetal oils

Clove, Geranium, Thyme



Storage diseases



Usable only



Curative effect

-2



3



Crop cycle : 4 - 5



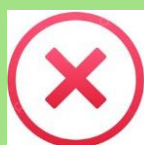


Elicitors

Defense stimulators



Powdery mildew
Apple scab
Storage disease



Usable only



Preventative effect -2



0



Crop cycle : 3 - 4





Basic substances

Saccharose - Fructose



Codling moth



Preventative effect -1



0



Crop cycle : 3





1

Per pest

Basic substances

Equisetum - Salix



*Powdery mildew
Apple scab*



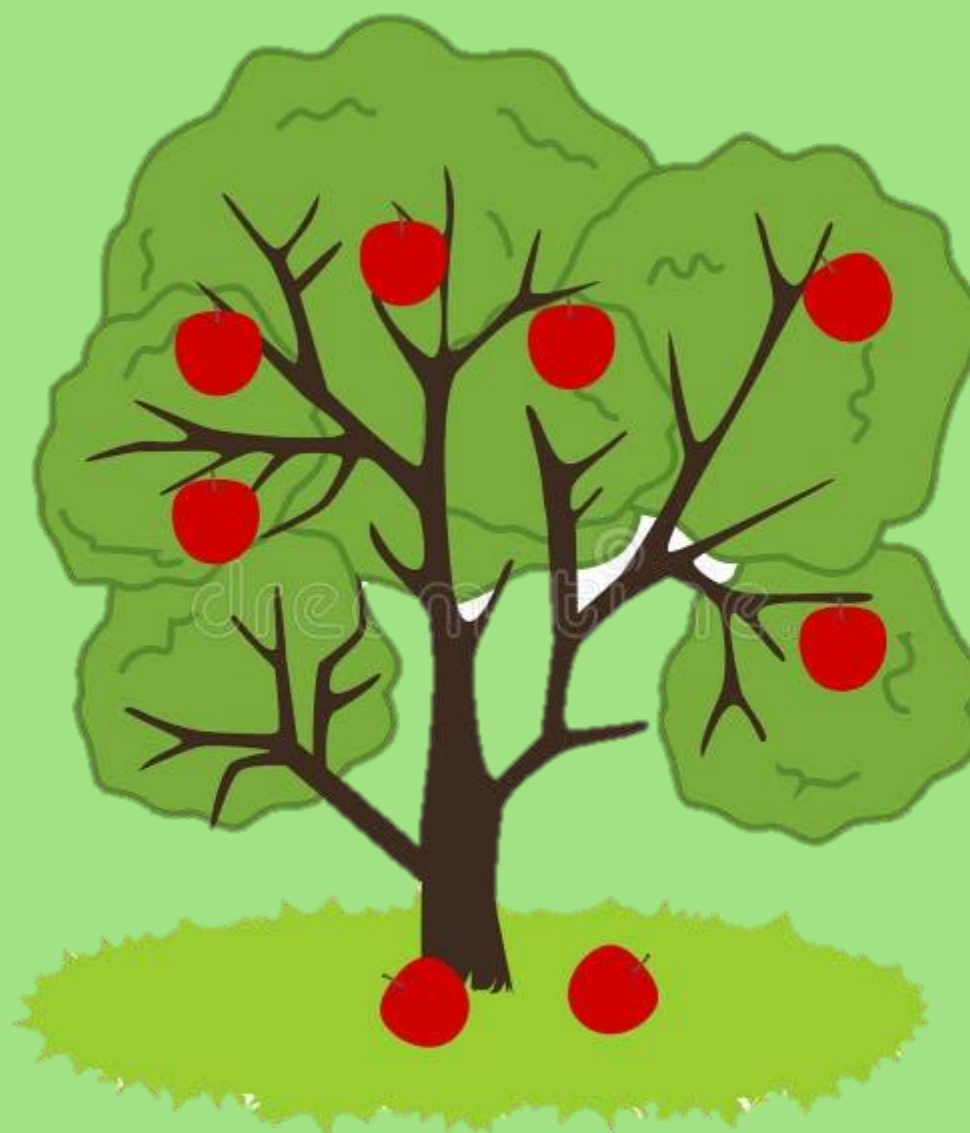
Preventative effect -1



0



Crop cycle : 3 - 4



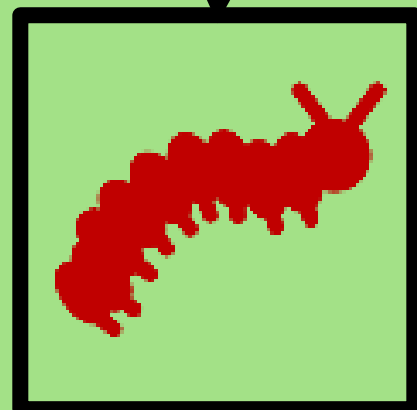


1

Per pest

Basic substances

Urtica - Talc



Codling moth
Aphids
Mites



Preventative effect -1



0

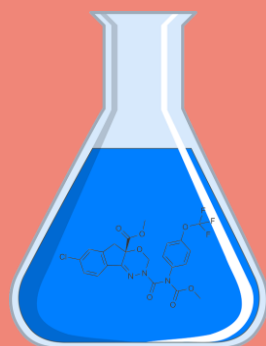


Crop cycle : 3 - 4





Copper



Apple scab



Cost x2 when



⚡ +2 in periods 4 & 5



Preventative effect - 2



Curative effect -1



4

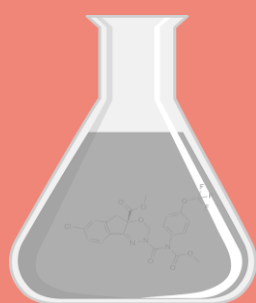


Crop cycle : 3 to 5





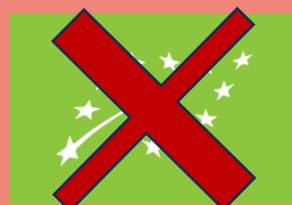
Storage diseases fungicide



Storage diseases



+2 in period 5



Preventative effect - 1



Curative effect - 4



4

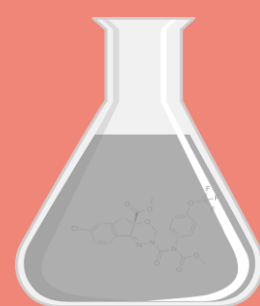


Crop cycle : 4 - 5





Airborne diseases fungicide



Apple scab
Powdery mildew



**for two pathogens*
Maximum 2 treatments/year
+1 in periods 4 and 5



Preventative effect - 1



Curative effect - 4



4



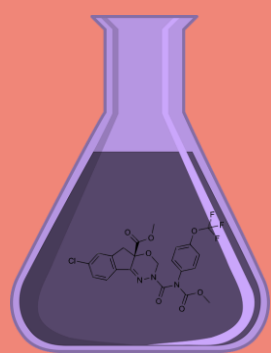
Crop cycle : 3 to 5





1

Acaricides



Mites

Maximum 2
treatments/year



Curative effect

- 4



6

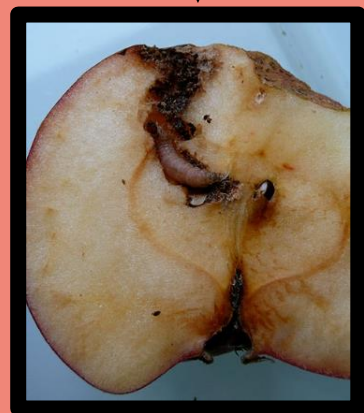
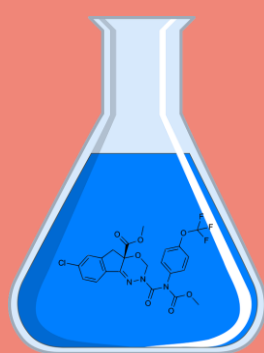


Crop cycle : 3 to 5





Growth regulator insecticide (Tebufenozide)



Codling moth

*Maximum 2
treatments/year*



Preventative effect - 3



Curative effect - 1



1



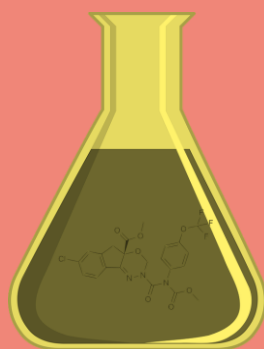
Crop cycle : 2 to 5





1

Aphicides (flonicamid - spirotetramat)



Aphids



Maximum 2
treatments/year



Curative effect

- 3



4



Crop cycle : 3 to 5





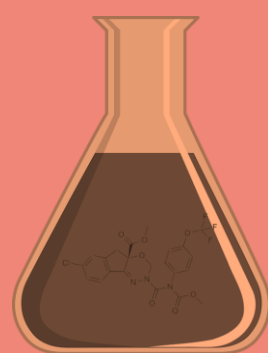
1

Polyvalent insecticide

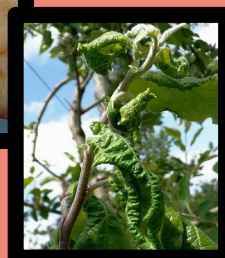
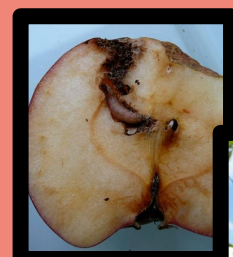
Pyrethroids



**Aphids
Codling moth**



Maximum 2 treatments/year
Cost x2 when



Curative effect

- 4



6



Crop cycle : 3 to 5

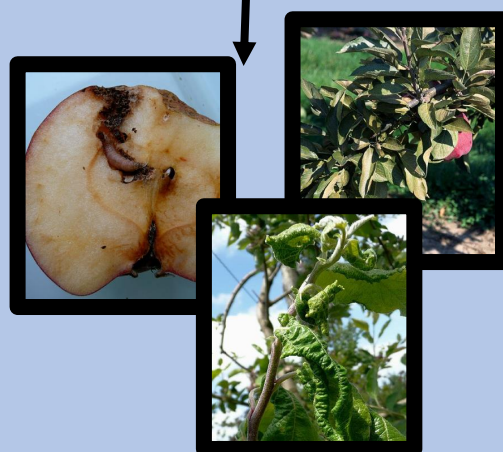




Ecological management



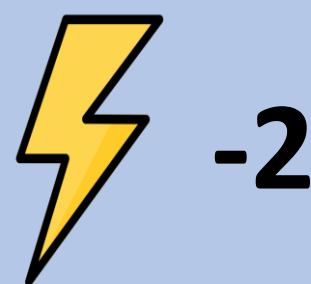
Aphids
Codling moth
Mites



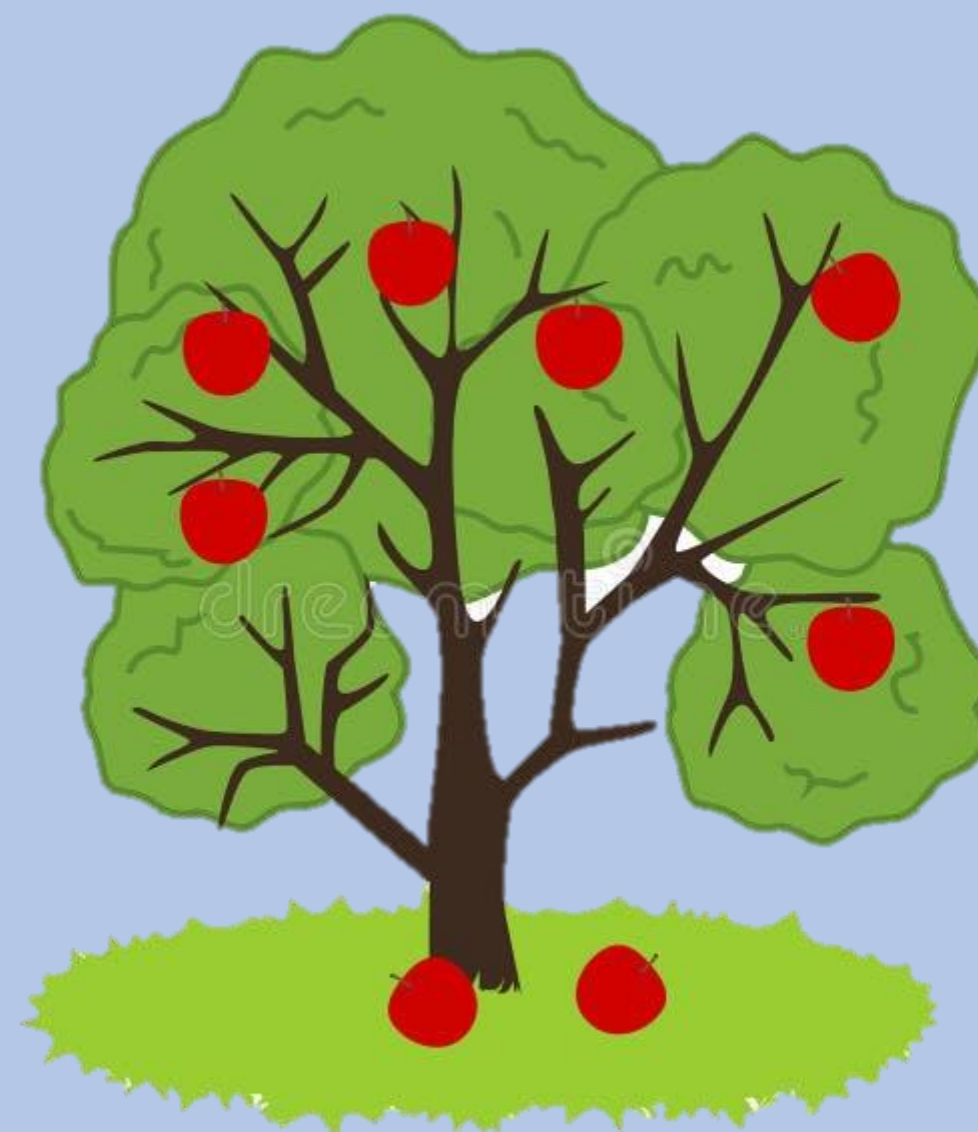
Preventative effect - 2

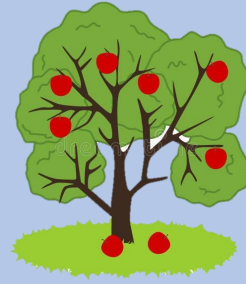


Curative effect - 1



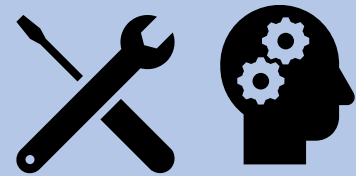
Crop cycle :





For each pest

Spraying Decision Support System



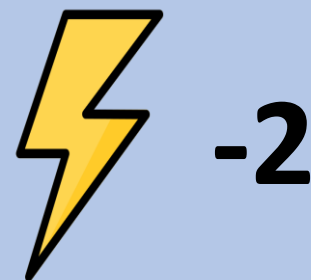
Aphids

Apple scab

Mites

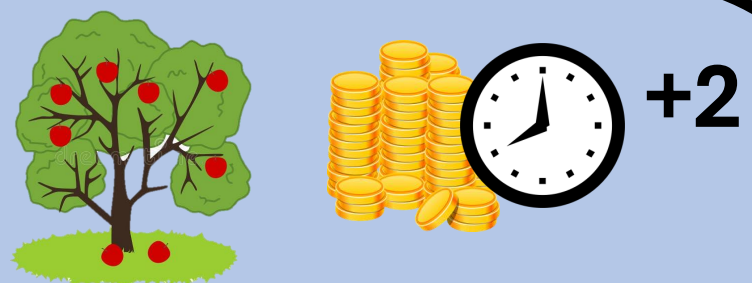


*Play with pesticide or biocontrol
product with cumulative effects.*



Crop cycle : 3 to 5

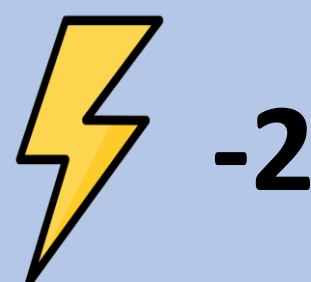




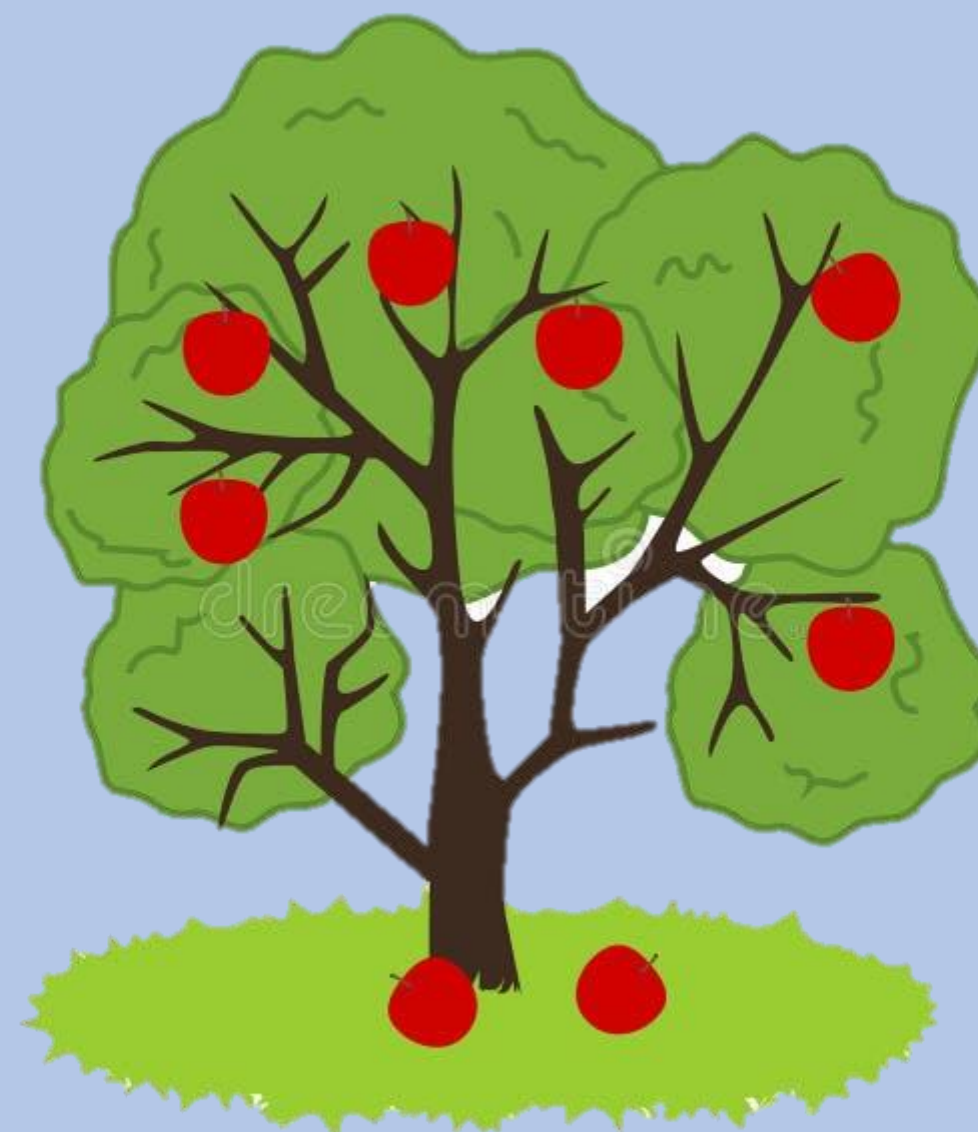
Low drift sprayer

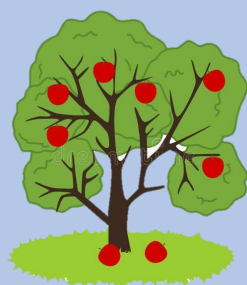


Play with pesticide or biocontrol product with cumulative effects.



Crop cycle : 3 to 5





Green pruning



Apple scab
Powdery mildew
Storage disease



*Only 1 reduction or
pruning / year*



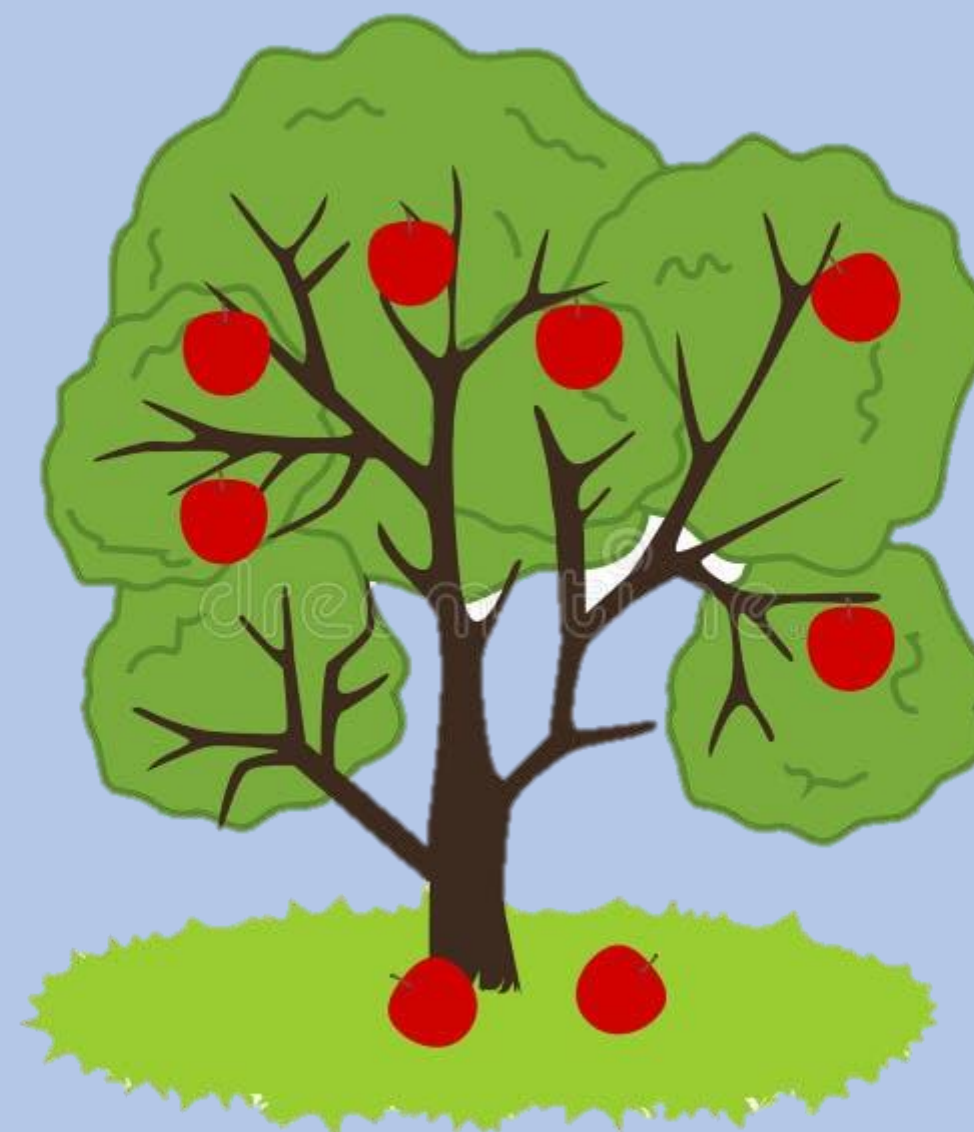
Preventative effect -2

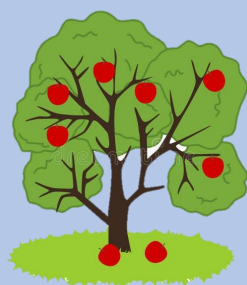


Curative effect -1



Crop cycle : 3 to 5





Reducing vigour of the tree



Aphids
Mites
Powdery mildew
Storage disease



Only 1 reduction or pruning / year



Preventative effect -2

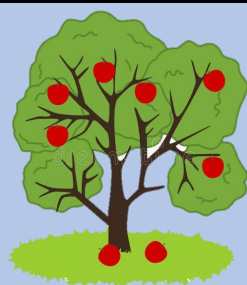


0



Crop cycle : 3 & 4

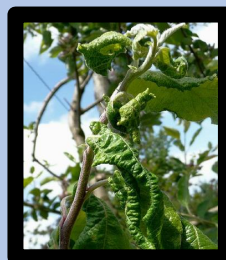




1

Rock powder

Kaolinite



Aphids



Preventative effect -2

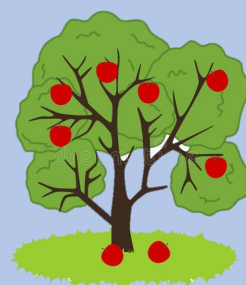


1



Periods : 3 & 4





Decision Support System (DSS)



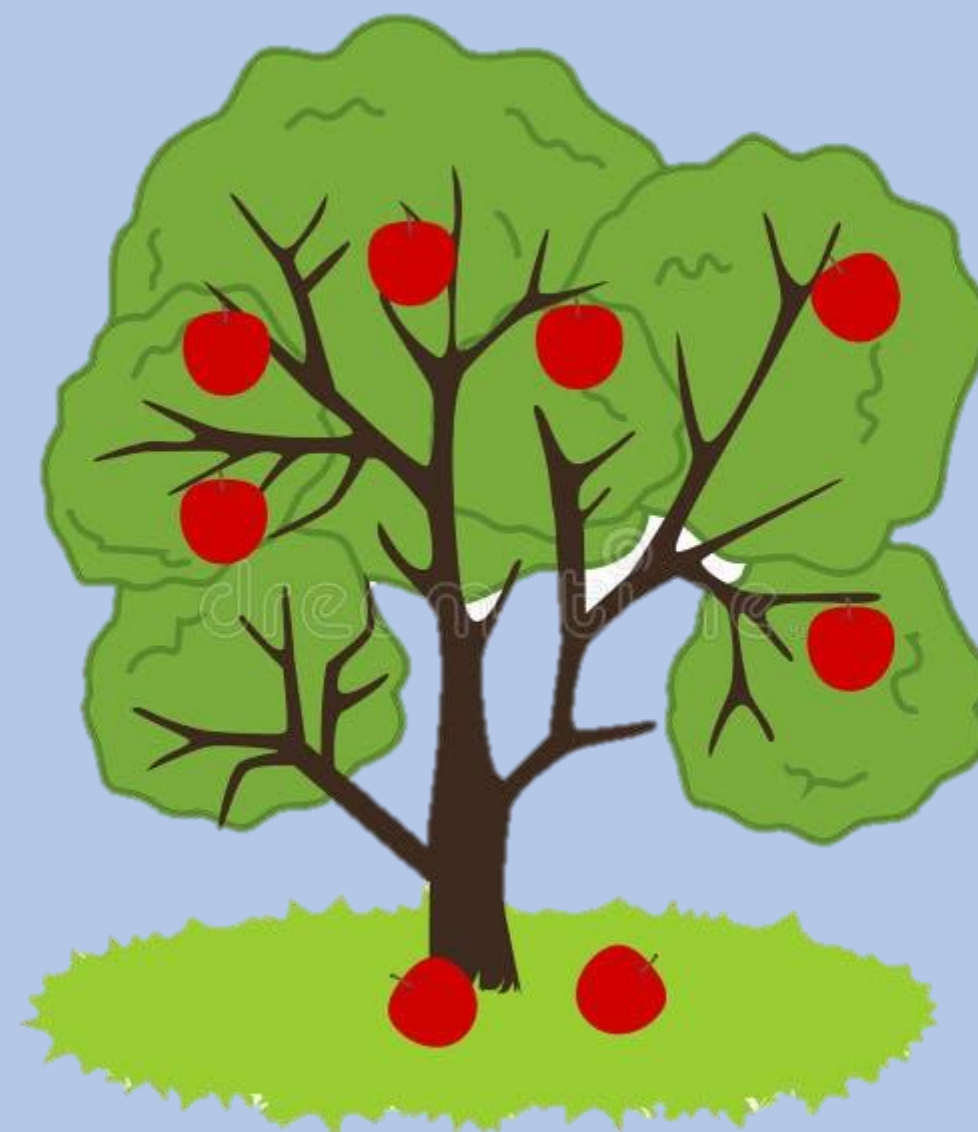
Aphids
Apple scab
Mites

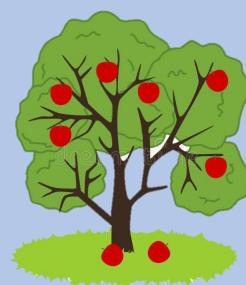


*Give the possibility to play
“Preventive measures”
next turn after drawing
a weather card*

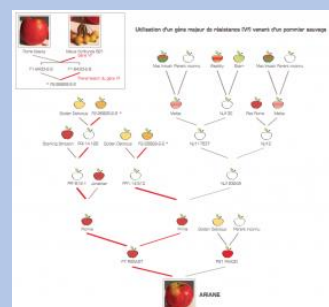


Crop cycle : 3 to 4





Resistant variety



Apple scab



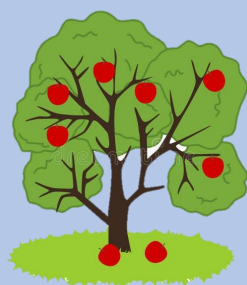
Preventative effect

- At each period – 3
- You have to combine with other solutions twice during the season to keep the efficacy > if not - 2



Crop cycle :





6 with nets

Anti-rain cover



Apple scab



Mites +1

At each period

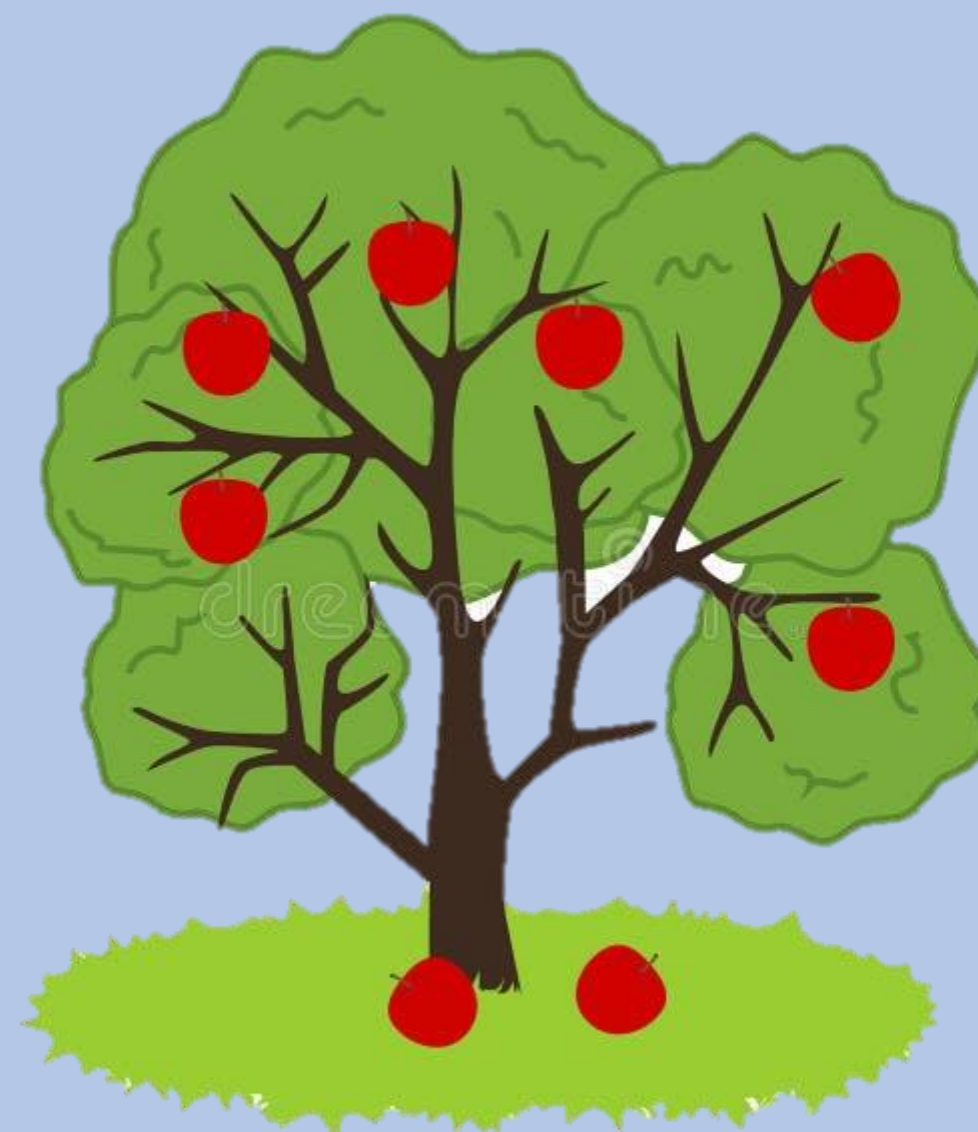


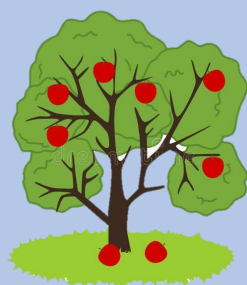
Preventative effect -2

At each period



Crop cycle :





Leaf pick-up



Apple scab



Preventative effect

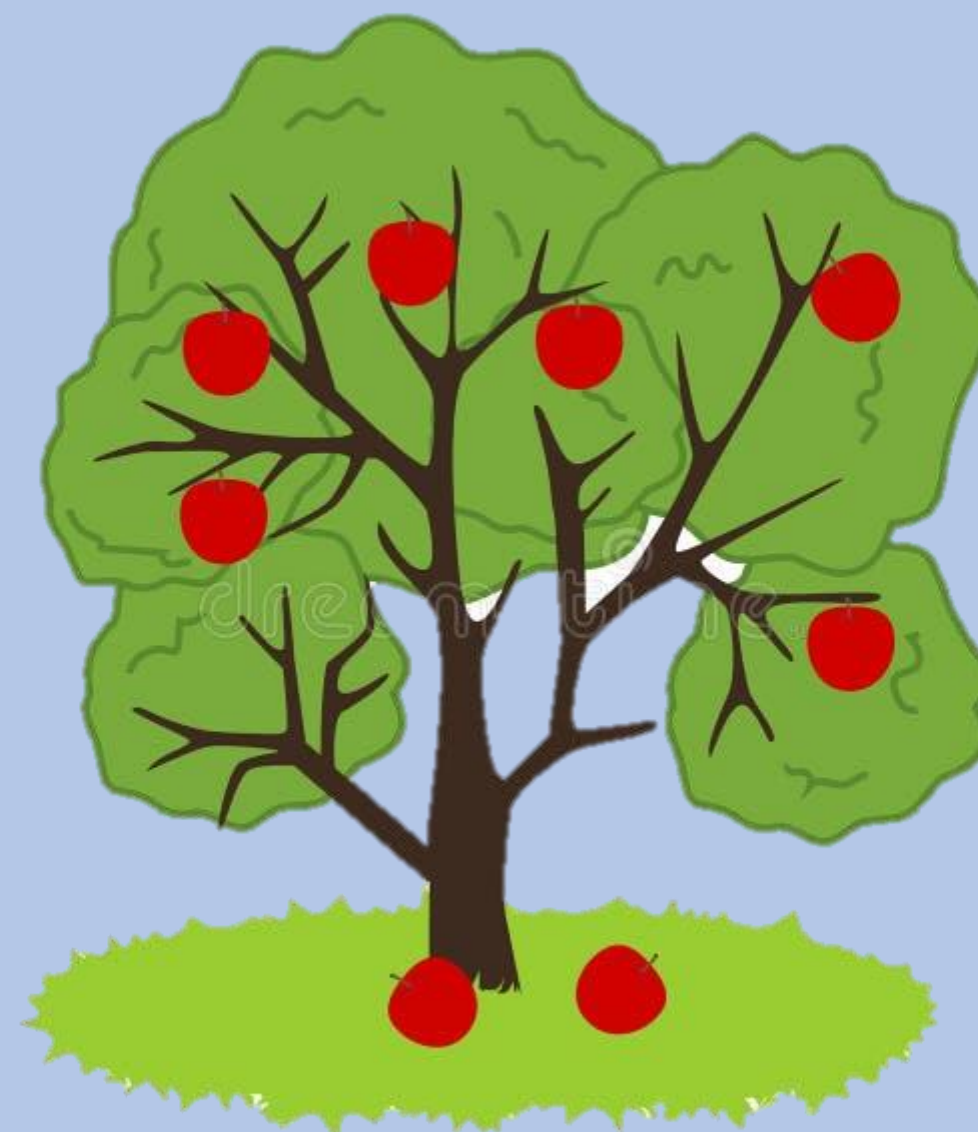
*Prevents primary
installation*



0



Crop cycle :





6 with AR cover

Nets



Codling moth



Preventative effect
At each period - 2

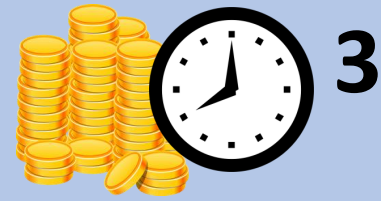
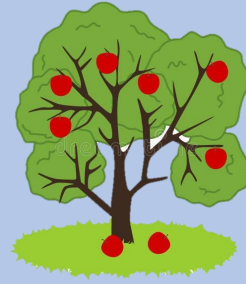


0



Crop cycle :  1





Eco-Grazing



Codling moth



Preventative effect -2



Curative effect -1



0



Crop cycle : 3



²

Corrugated cardboard strips



Codling moth



Preventative effect

***Prevents primary
installation***

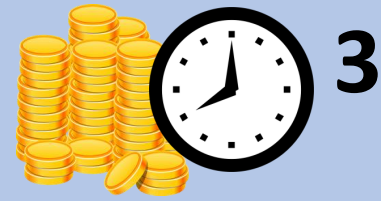


0



Crop cycle :





AEI > birds & chiropterans



Codling moth



Preventative effect -2

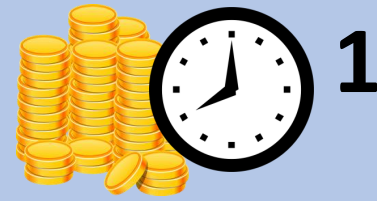
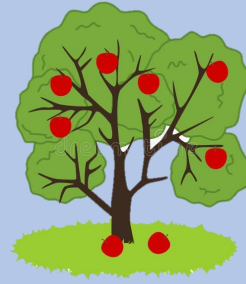


-1



Crop cycle :



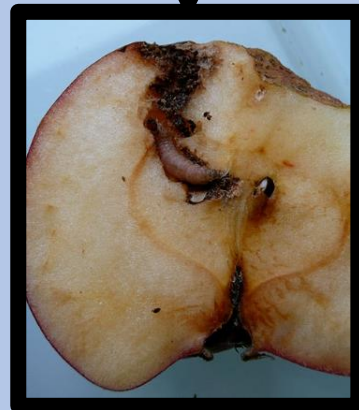


1

Augmentorium



Codling moth



Preventative effect - 1
for 2 periods



-1

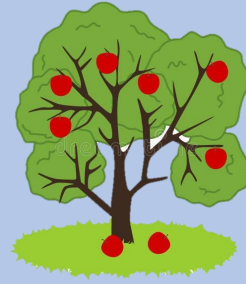


Crop cycle :

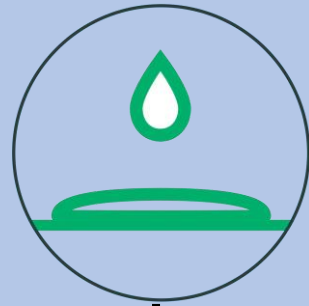


3 - 4

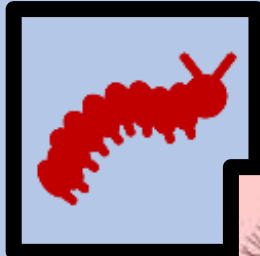




Adjuvant



*Play with biocontrol product to
be applicable by dry weather*

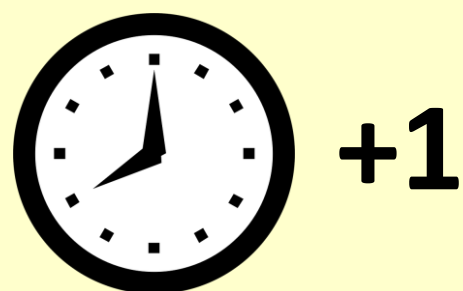


Crop cycle : 3 to 5





Associated treatments



You win 1 time unit when you spray with 2 biocontrol or 2 chemicals products



Crop cycle : 3 to 5





Biocontrol product + 1/2 dose of copper



Apple scab



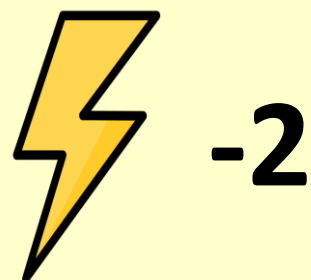
Preventative effect

+1 *Copper efficacy is low*



+1

*You win 1 time unit when you
spray this association*



-2

And you reduce impact of copper



Periods : 3 to 5

