



5

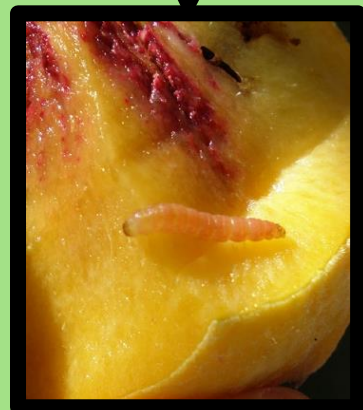


5

Mating disruption



Oriental moth



Preventive effect - 3

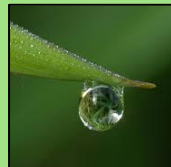
*The preventive effect
is repeated for each period*

Tox



0

Res



0

Eco



0

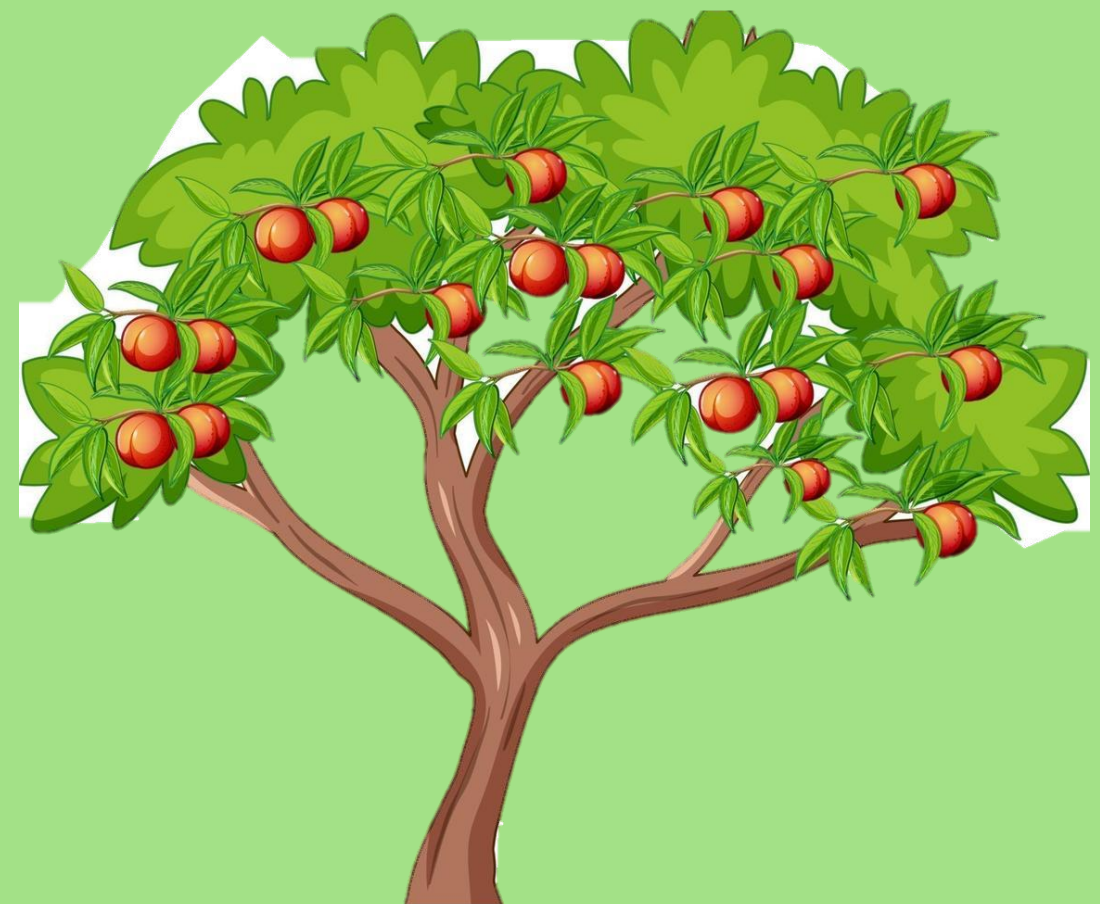
Ben



0



Crop cycle :  - 1 & 2





3



2

Biocontrol insecticide

Bacillus thuringiensis

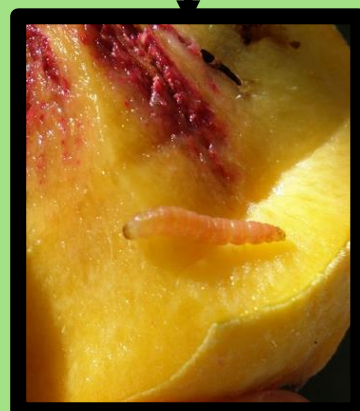


Oriental moth

Bacillus
Thuringiensis



Maximum 2
treatments/year.



Curative effect

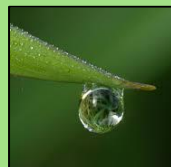
- 4

Tox



0

Res



0

Eco



+ 2

Ben



0



Crop cycle : 2 to 5





1



2

Sulphur

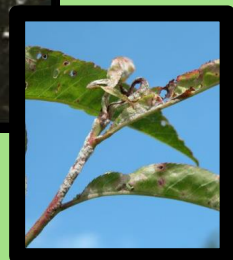
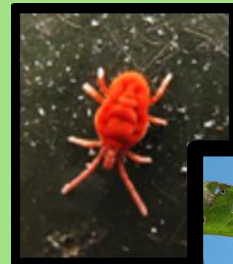


**Powdery mildew
Mites**

Usable except



Cost and Time x2 when



Preventive effect - 2



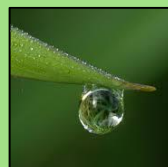
Curative effect -1

Tox



+1

Res



0

Eco



+2

Ben



+2



Crop cycle : 1 to 5





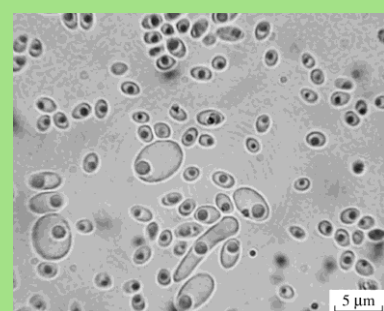
3



2

Microorganisms

B.subtilis, M. fructicola, S.cerevisiae



Brown rot



Usable only



Preventive effect - 2

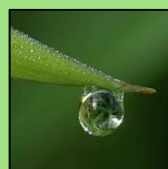


Tox



0

Res



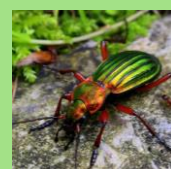
0

Eco



0

Ben



0



Crop cycle : 3 - 4





3



2

Microorganisms

B.bassiana



Western flower
thrips



Usable only



Preventive effect

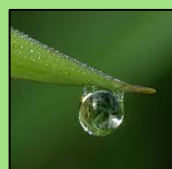
-2

Tox



0

Res



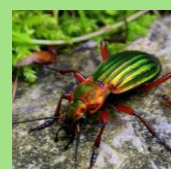
0

Eco



0

Ben



0



Crop cycle : 2 to 5



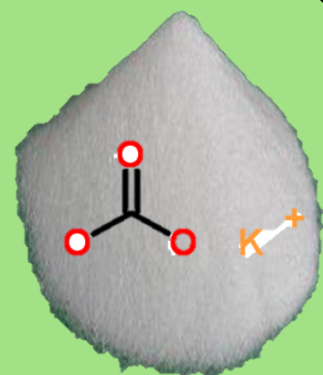


3



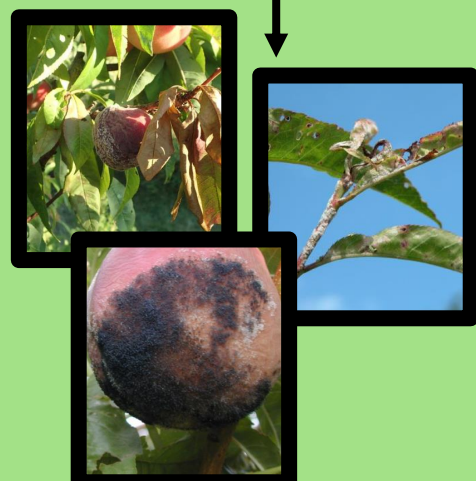
2

Potassium hydrogen carbonate



Brown rot
Powdery mildew
Storage diseases

Usable except



Preventive effect - 2



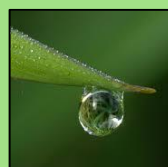
Curative effect -1
Only in association with sulphur

Tox



0

Res



0

Eco



0

Ben



0



Crop cycle : 1 to 5





3



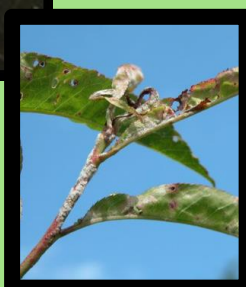
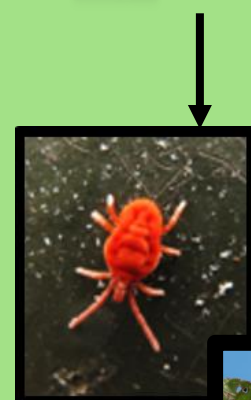
2

Essential oil

Sweet orange



Powdery mildew
Mites



Curative effect

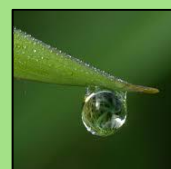
-3

Tox



+2

Res



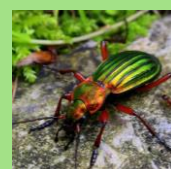
0

Eco



+2

Ben



+2



Crop cycle : 1 to 4





1



2

Paraffin oil



Mites



Preventive effect

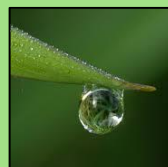
Prevents primary
installation

Tox



+2

Res



0

Eco



0

Ben



0



Crop cycle : p





2



2

Rape oil



Mites



Preventive effect

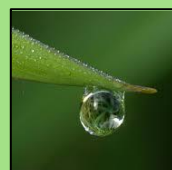
Prevents primary
installation

Tox



0

Res



0

Eco



0

Ben



0



Crop cycle :





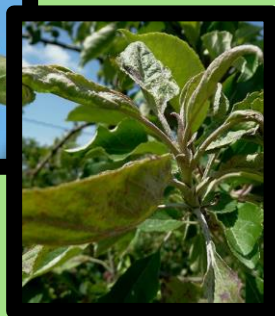
Basic substances

Equisetum – Salix - Lecithin



Powdery mildew*
Leaf curl

** Non approved on peach tree*



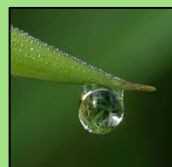
Preventive effect -1

Tox



0

Res



0

Eco



0

Ben



0



Crop cycle : 2 to 4





Basic substance

Urtica



Aphids
Brown rot
Storage diseases



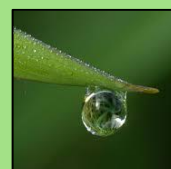
Preventive effect -1

Tox



0

Res



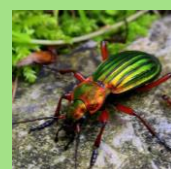
0

Eco



0

Ben



0



Crop cycle : 3 - 4





3



2

Bio-Insecticide Spinosad



Oriental moth
Western flower thrips

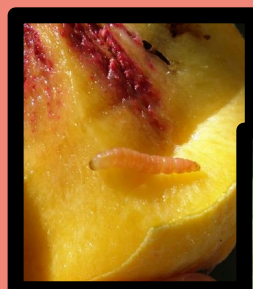


Maximum 2 treatments/year.



Curative effect

-3



Tox



0

Res



0

Eco



+1

Ben



+1



Crop cycle : 2 to 5





2 (+1*)



2

Specific insecticide *Émamectine, Spinetoram*



Oriental moth
Western flower thrips



** For 2 pests*
Maximum 2 treatments/year.



Curative effect

-3

Tox



+ 2

Res



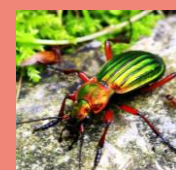
0

Eco



+ 2

Ben



+ 1



Crop cycle: 2 to 5





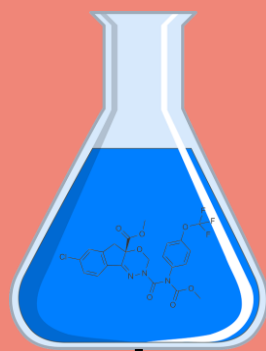
1



2



Copper – captan - dodine



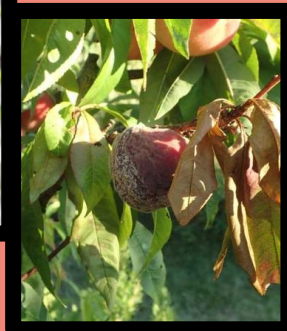
Leaf curl
Brown rot



Cost x2 when



x2 in periods 4&5



Preventive effect - 2



Curative effect -1

Tox



+2

Res



+ 2

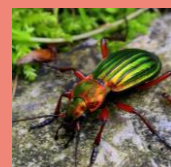


Eco



+ 3

Ben



+2



Crop cycle : 1 to 5





2



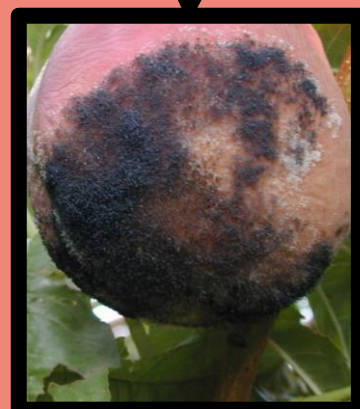
2

Specific fungicides

Storage diseases



Storage diseases



x2 in period 5



Preventive effect

- 1



Curative effect

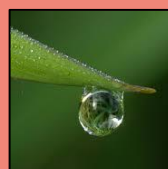
- 4

Tox



+ 2

Res



+ 3

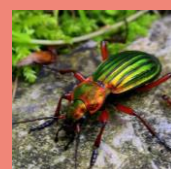


Eco



+ 2

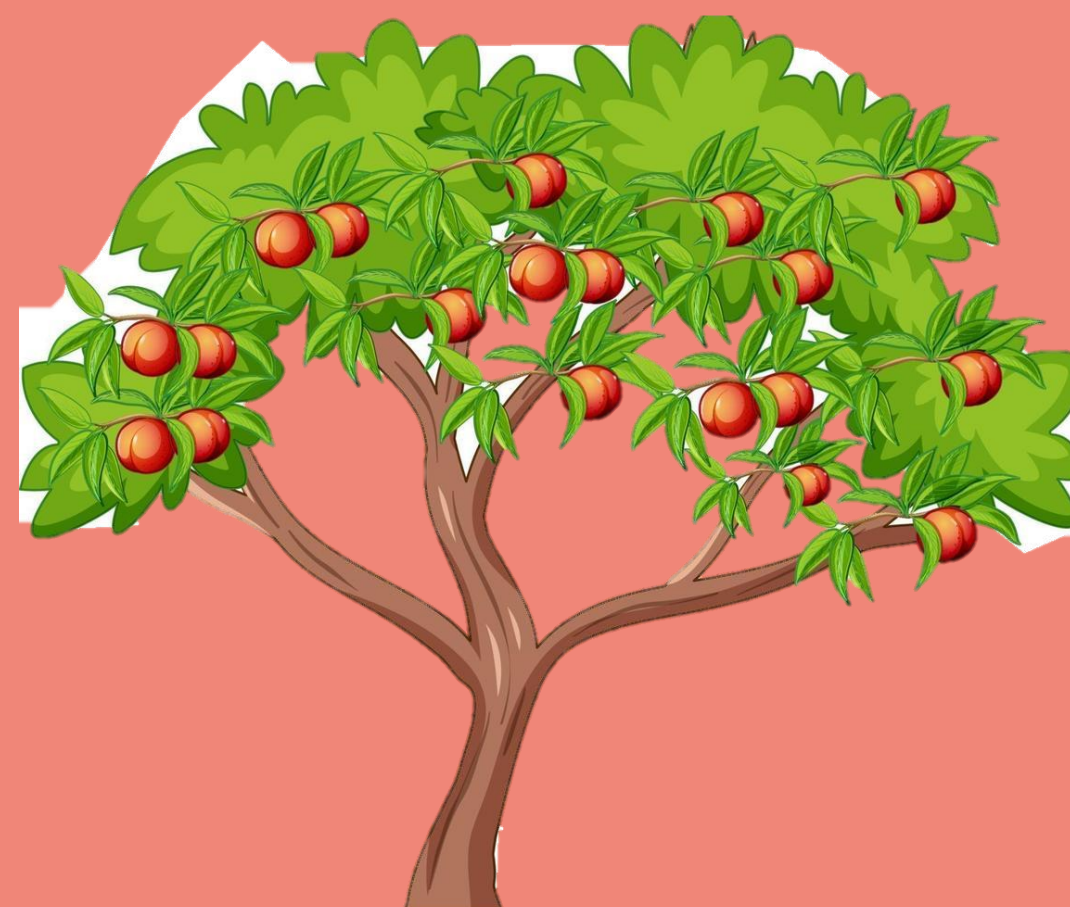
Ben



+ 2



Crop cycle : 3 - 5





2 (+1*)



2

Specific fungicides – airborne diseases



Brown rot

Powdery mildew

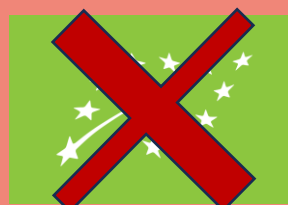
*for 2 diseases



Maximum 2 treatments / year



x2 in period 5



Preventive effect

- 1



Curative effect

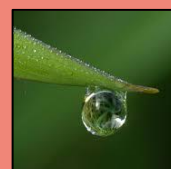
- 4

Tox



+ 2

Res



+ 2

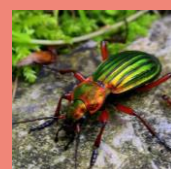


Eco



+ 2

Ben



+ 2



Crop cycle : 2 to 5



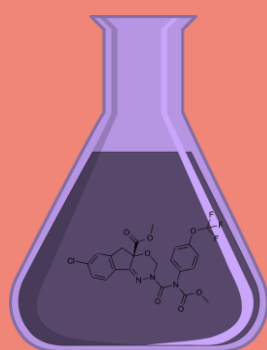


2



2

Acaricides



Mites



Maximum
2 treatments / year



Curative effect

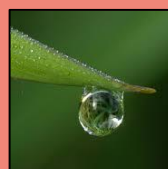
- 4

Tox



+4

Res



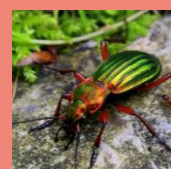
0

Eco



+ 4

Ben



+ 4

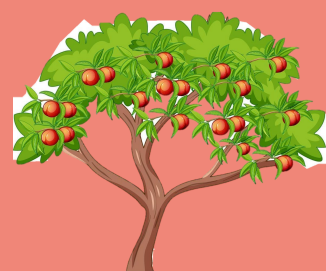


Crop cycle : 2 to 5





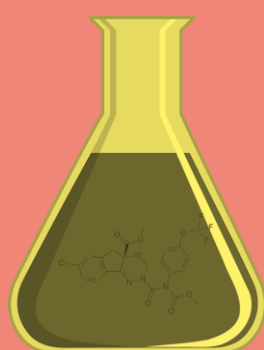
2



2

Aphicids

flonicamid - spirotetramat



Aphids



Maximum
2 treatments / year



Curative effect

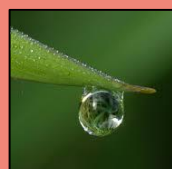
- 3

Tox



+2

Res



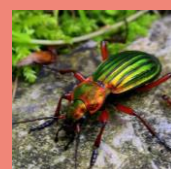
0

Eco



+ 2

Ben



+ 3



Crop cycle : 2 to 5





1

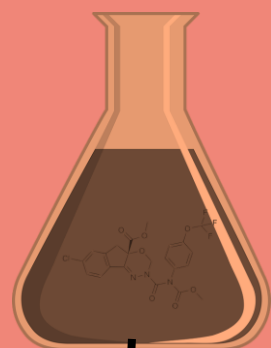


2



Polyvalent insecticide

Pyrethroids



Aphids

Oriental moth

Western flower thrips



Maximum 2 treatments / year
Costs x2 when



Curative effect

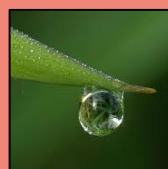
- 4

Tox



+4

Res



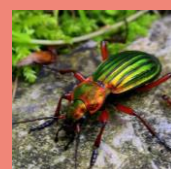
0

Eco



+ 4

Ben



+ 4



Crop cycle : 2 to 5





2



2

Specific fungicide

Cyprodinil & fludioxonil
Fenpyrazamin, Isofetamid



Brown rot



Maximum 2 treatments/year
x2 in period 5



Curative effect

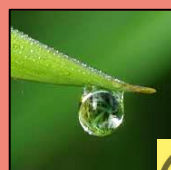
- 4

Tox



+ 3

Res



+ 3

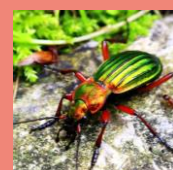


Eco



+ 2

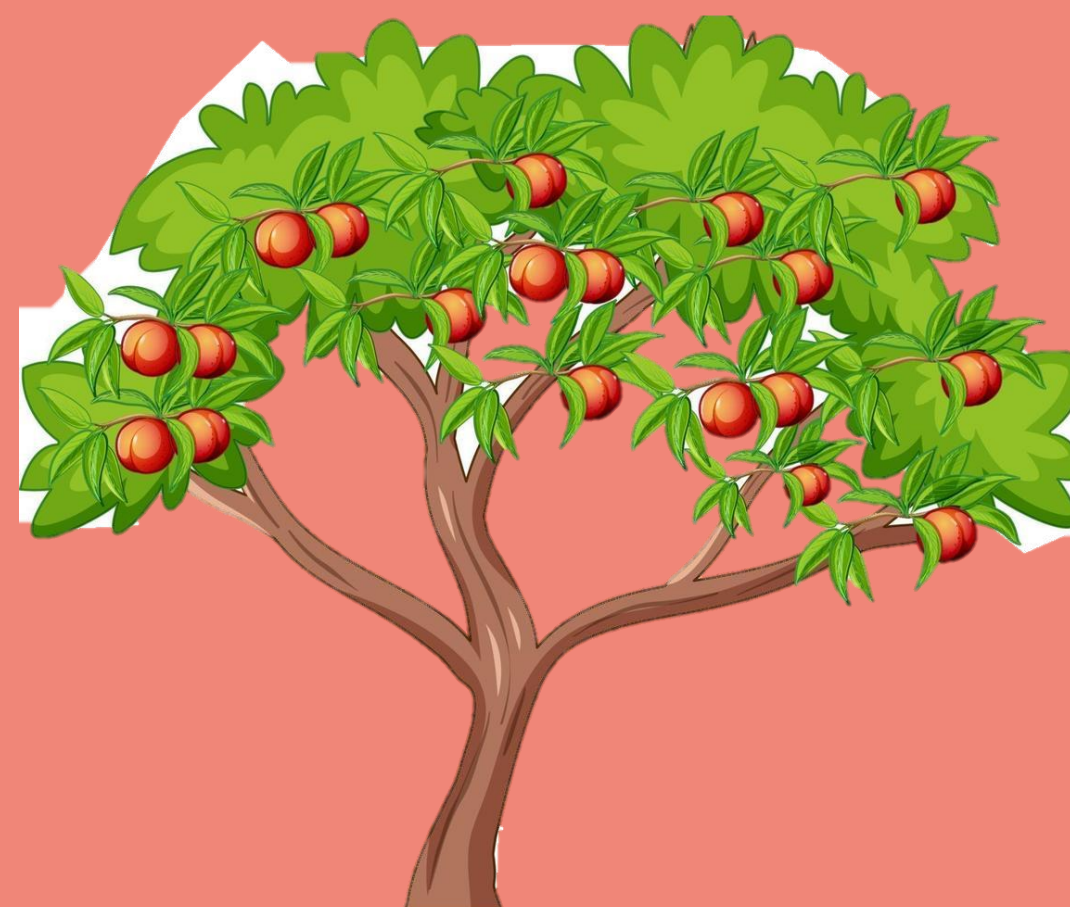
Ben



+ 2



Crop cycle : 2 to 5





2



2

Specific fungicide

bupirimate, cyflufenamid

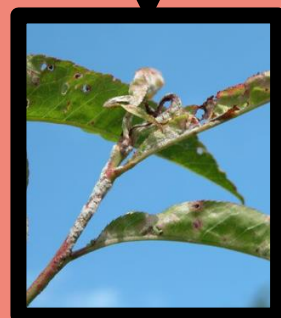
fluxapyroxad



Powdery mildew



Maximum 2 treatments/year



Preventive effect

- 1



Curative effect

- 4

Tox



+ 2

Res



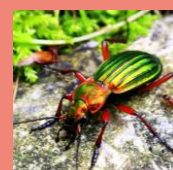
+ 2

Eco



+ 2

Ben

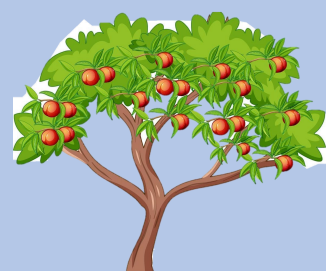


+ 2



Période : 1 à 5

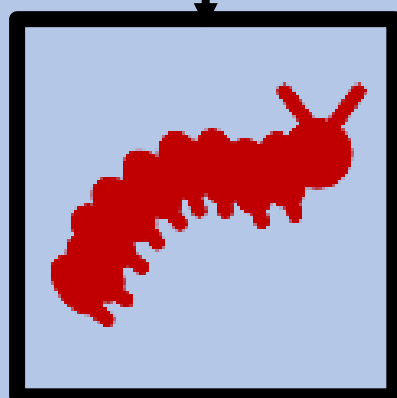




Ecological management



Aphids
Oriental moth
Mites
Western flower thrips



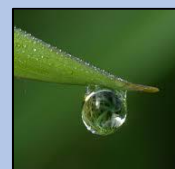
! *Preventive effect* - 2
+ *Curative effect* - 1

Tox



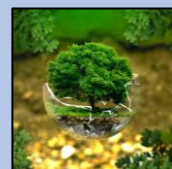
0

Res



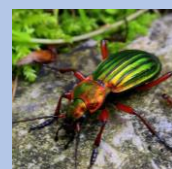
0

Eco



-1

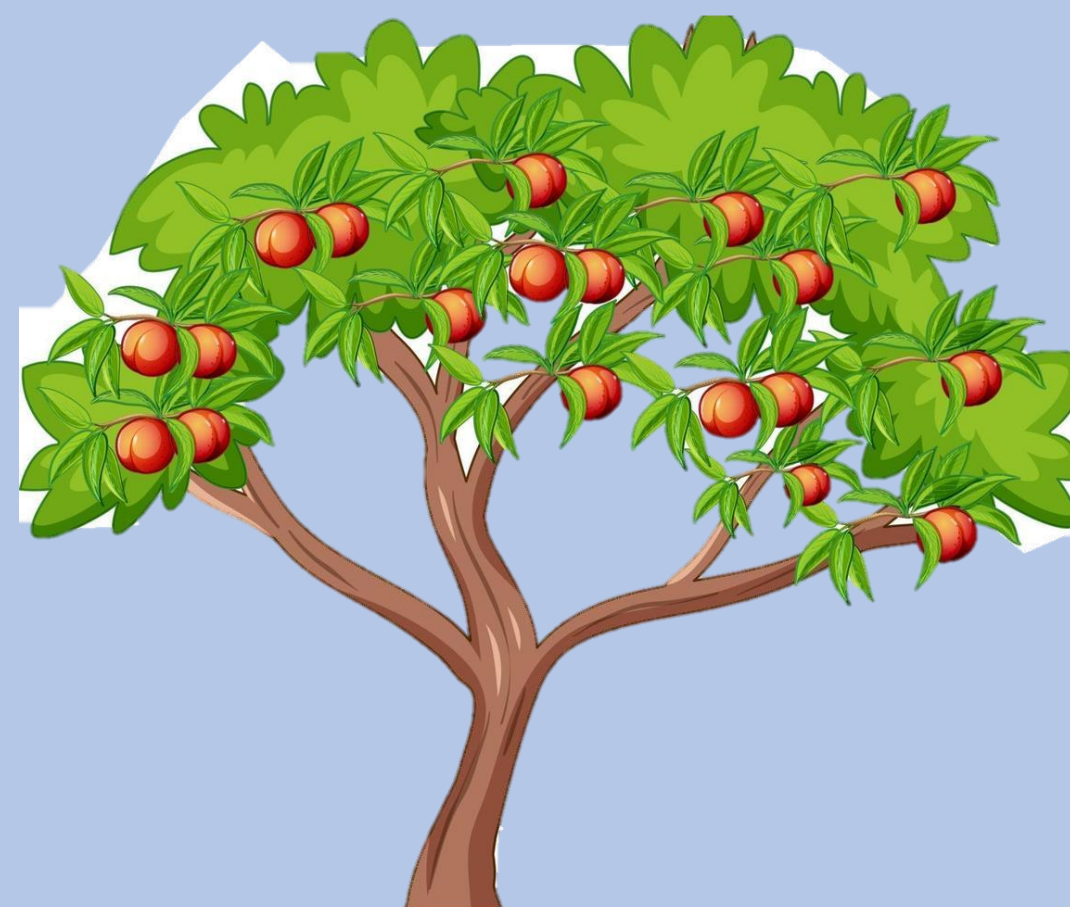
Ben



-2

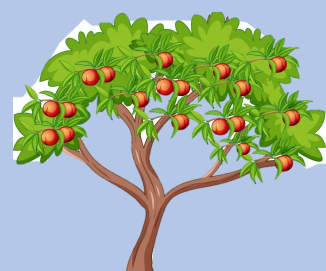


Périodes :  - 1 - 2





3



5

Green pruning

Brown rot



Powdery mildew

Leaf curl

Storage diseases



*Maximum 2 reductions
or pruning / year
Not 2 periods in a row*



Preventive effect

-2



Curative effect

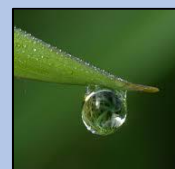
-1

Tox



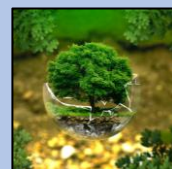
0

Res



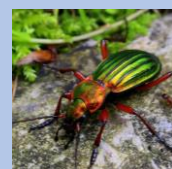
0

Eco



0

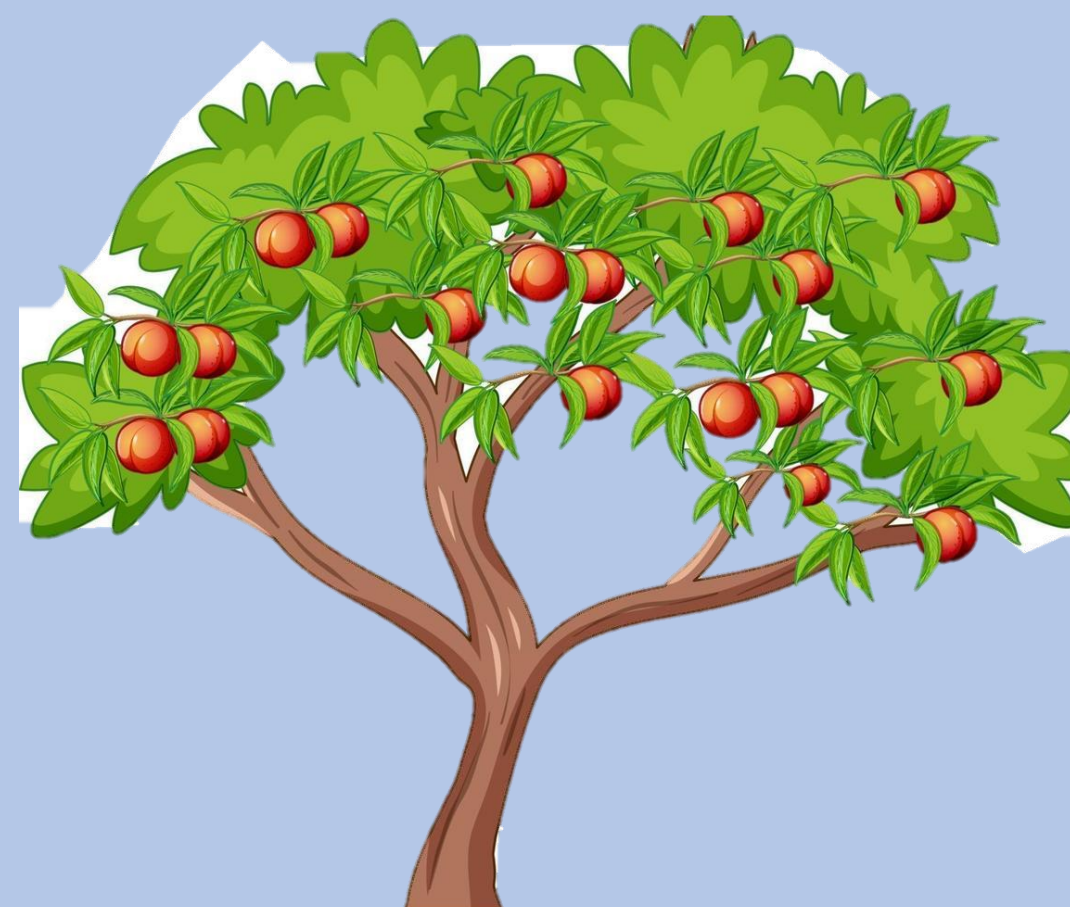
Ben



0

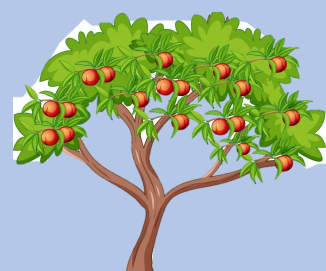


Crop cycle : 3 to 5





2



4

Reducing vigour of the tree



Aphids

Mites



Powdery mildew

Brown rot

Storage diseases

Maximum 2 reductions

or pruning / year

Not 2 periods in a row



Preventive effect

-2

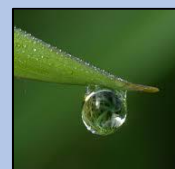


Tox



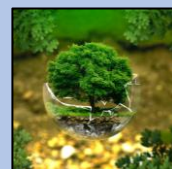
0

Res



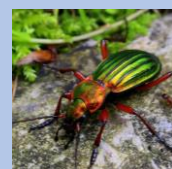
0

Eco



0

Ben



0

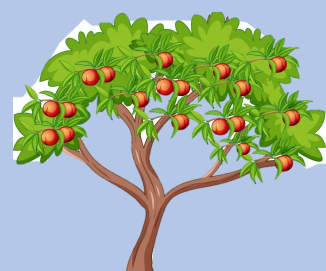


Crop cycle : 1 to 4





1



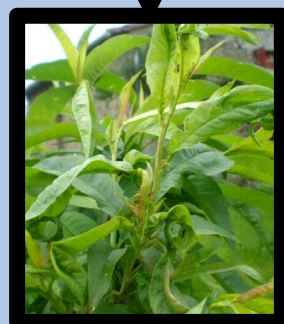
2

Rock powder

Kaolin



Aphids



Preventive effect

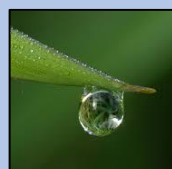
-2

Tox



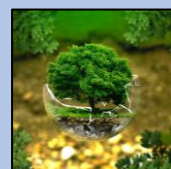
+1

Res



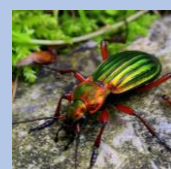
0

Eco



0

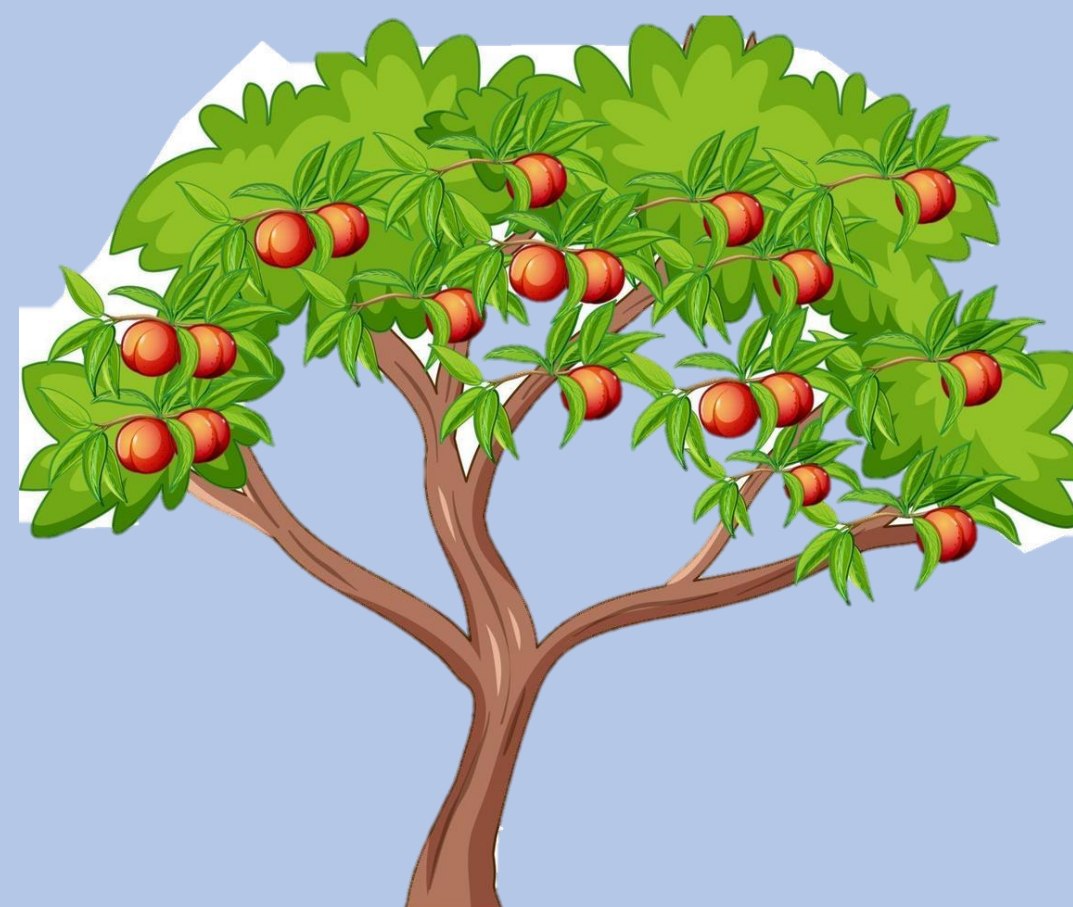
Ben



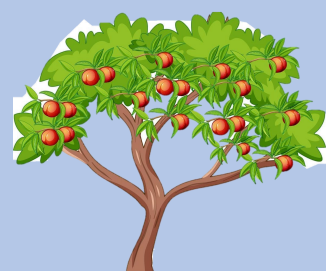
0



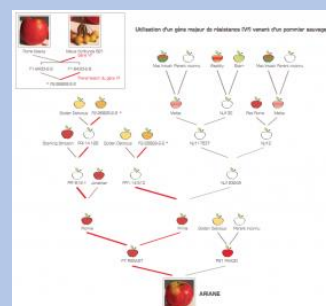
Crop cycle : 3 - 4



5
For one pest



Resistant variety

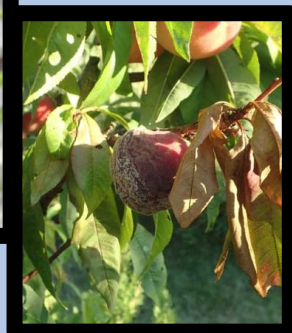


*Leaf curl
Brown rot*



Preventive effect

- At each period – 3
- You have to combine with other solutions twice during the season to keep the efficacy > if not - 2

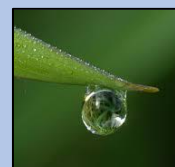


Tox



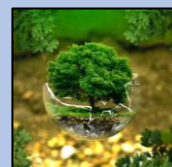
0

Res



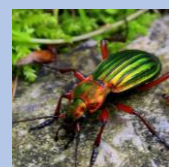
0

Eco



0

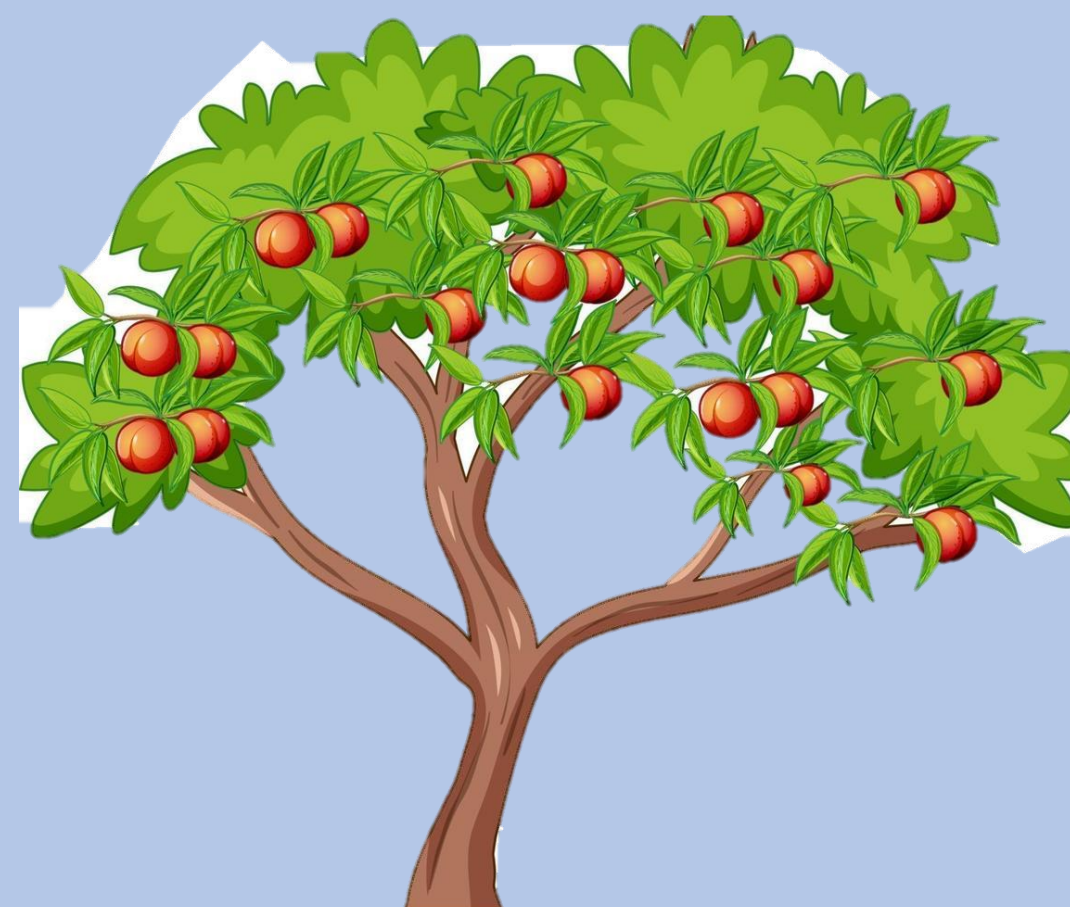
Ben



0



Crop cycle :





3



4

Anti-rain cover

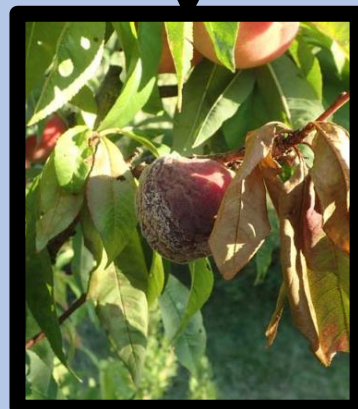


Brown rot



Mites +1

At each period



Preventive effect

-2

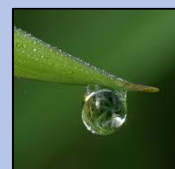
At each period

Tox



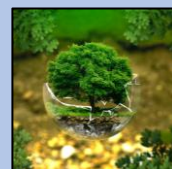
0

Res



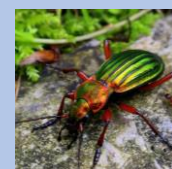
0

Eco



0

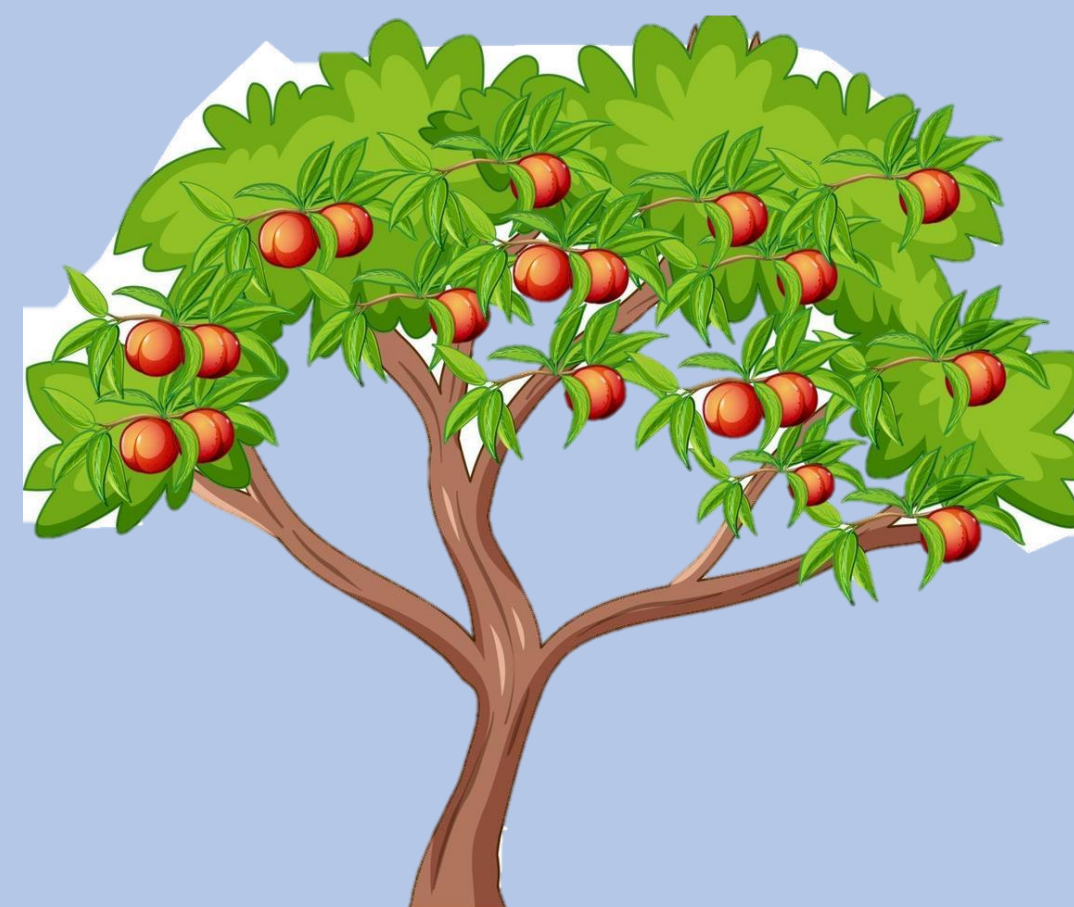
Ben



0



Crop cycle :





2



3

Mummies pick-up



Brown rot



Preventive effect

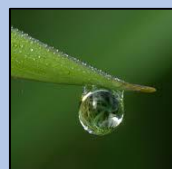
Prevents primary installation

Tox



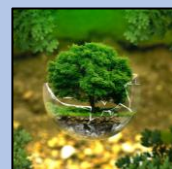
0

Res



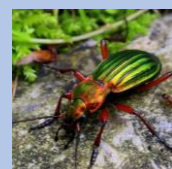
0

Eco



0

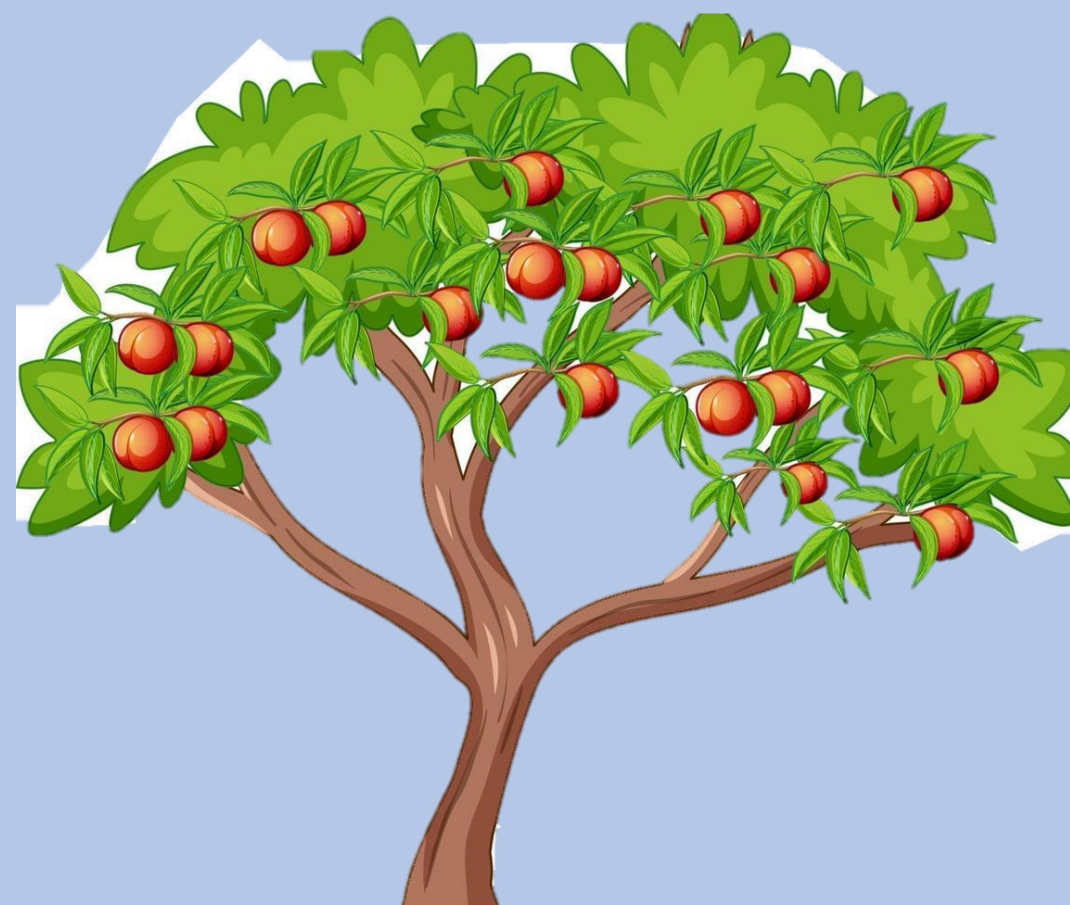
Ben

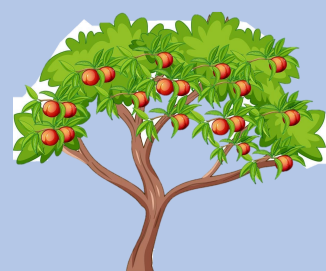


0



Crop cycle :

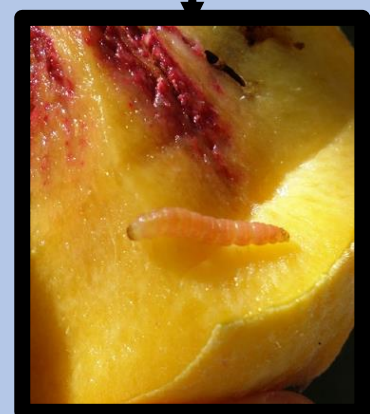




Eco-grazing



Oriental moth



Preventive effect -2



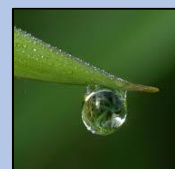
Curative effect -1

Tox



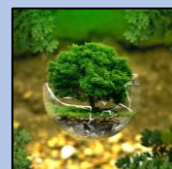
0

Res



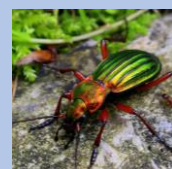
0

Eco



0

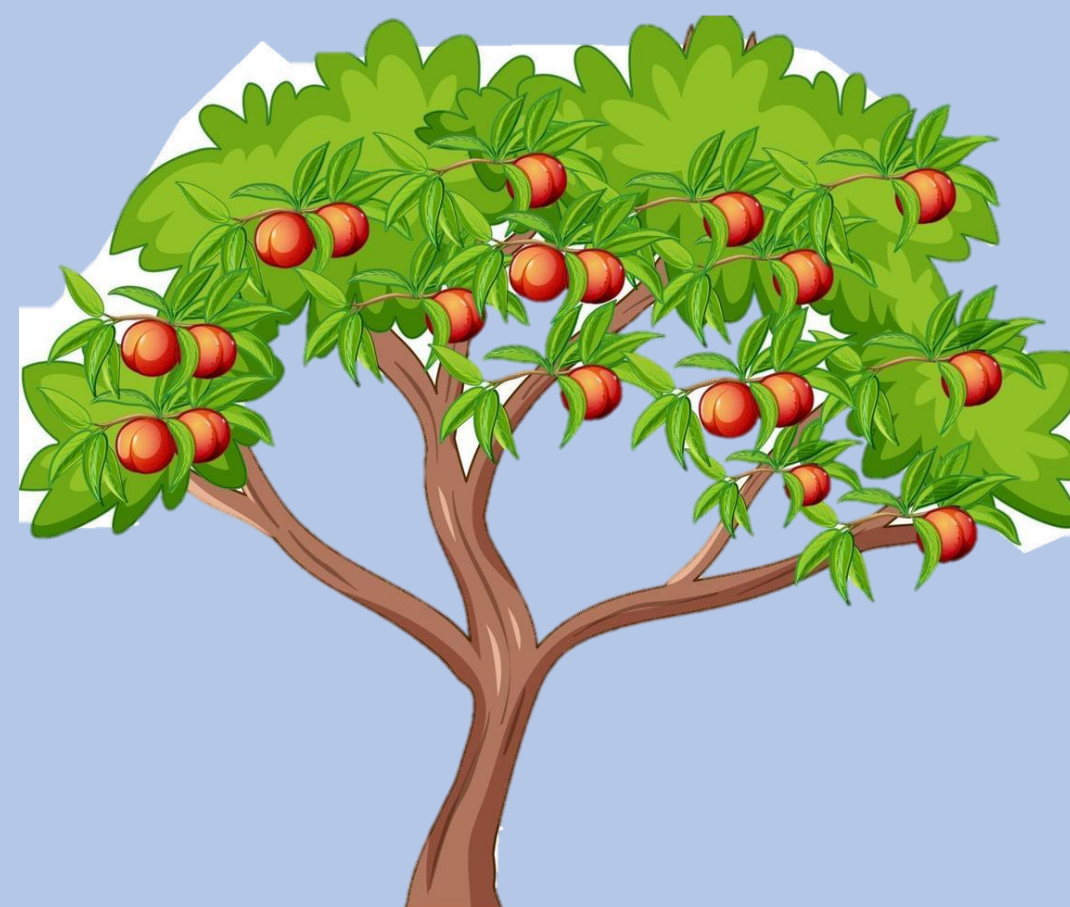
Ben



0

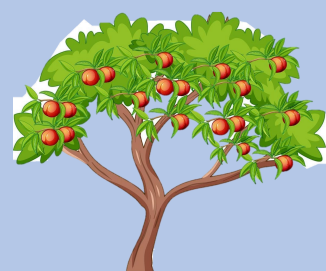


Crop cycle : 1 to 3





3

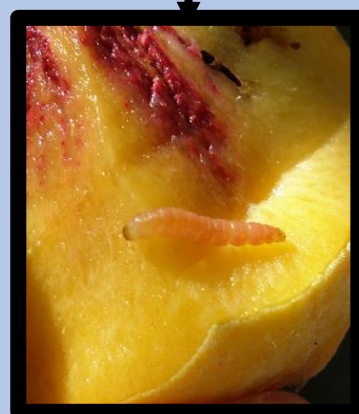


3

AEI > birds & chiropterans



Oriental moth



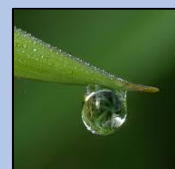
Preventive effect -2

Tox



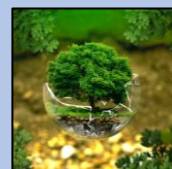
0

Res



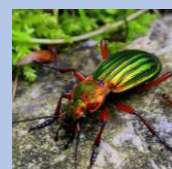
0

Eco



-1

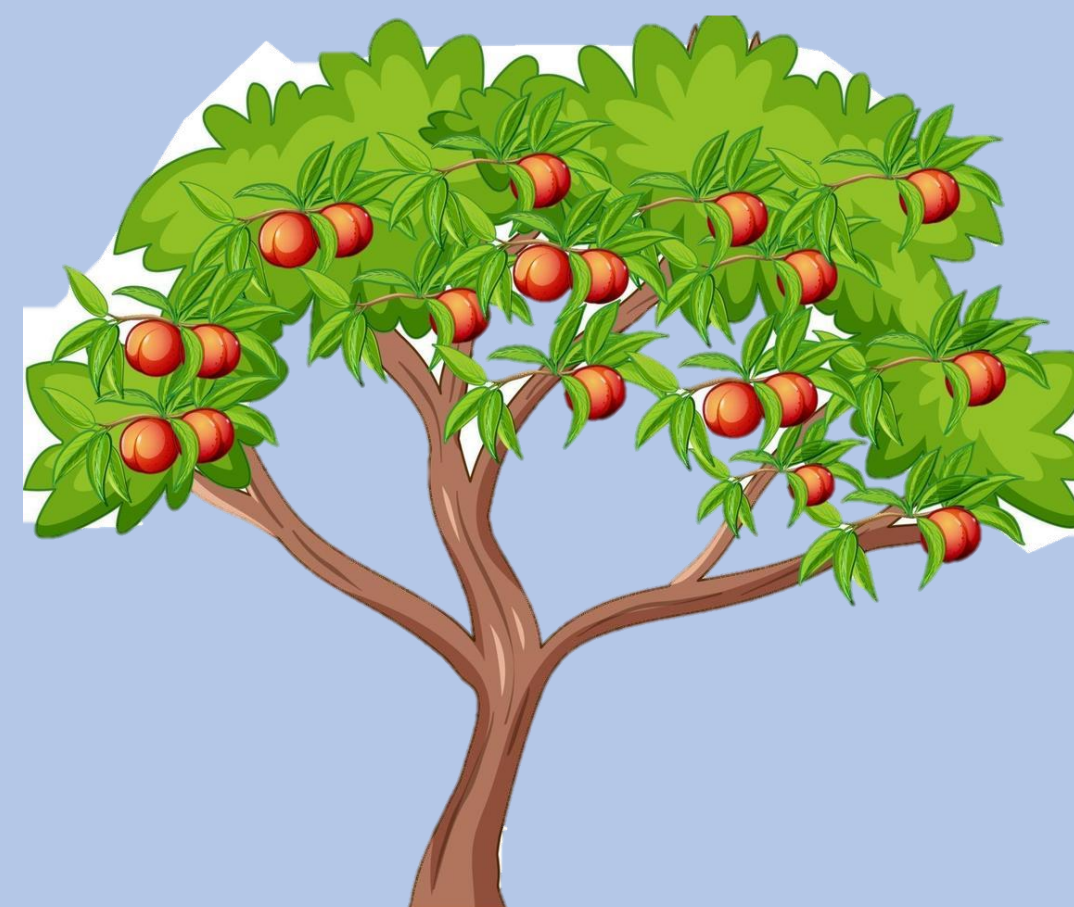
Ben



-1



Crop cycle :





2

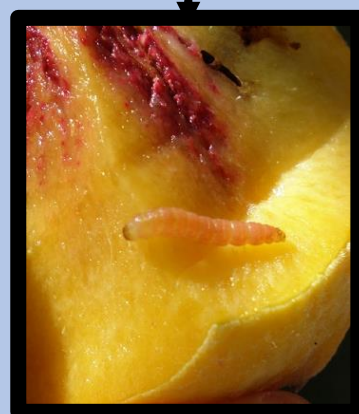


1

Augmentorium



Oriental moth



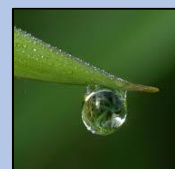
Preventive effect - 1
For 2 periods

Tox



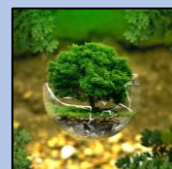
0

Res



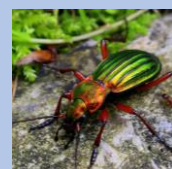
0

Eco



0

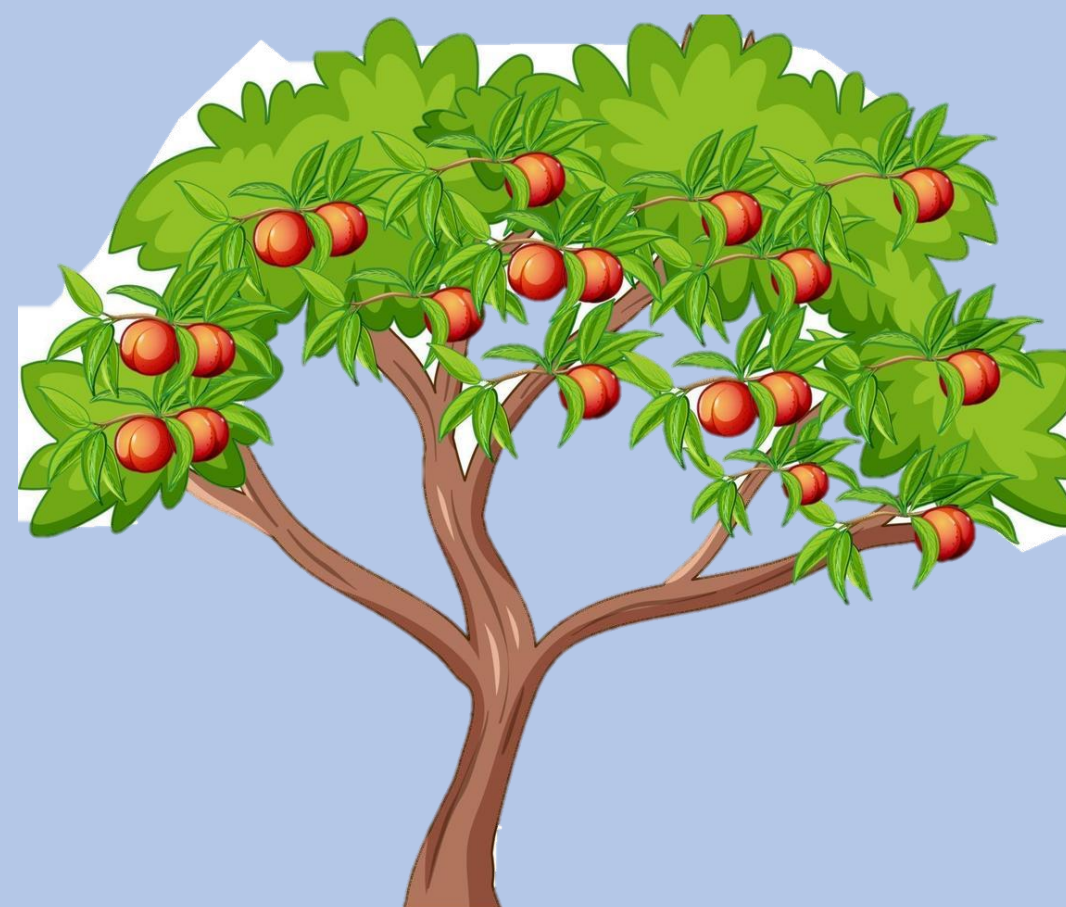
Ben



-1



Crop cycle :  1 to 4





2



1

Decision Support System (DSS)



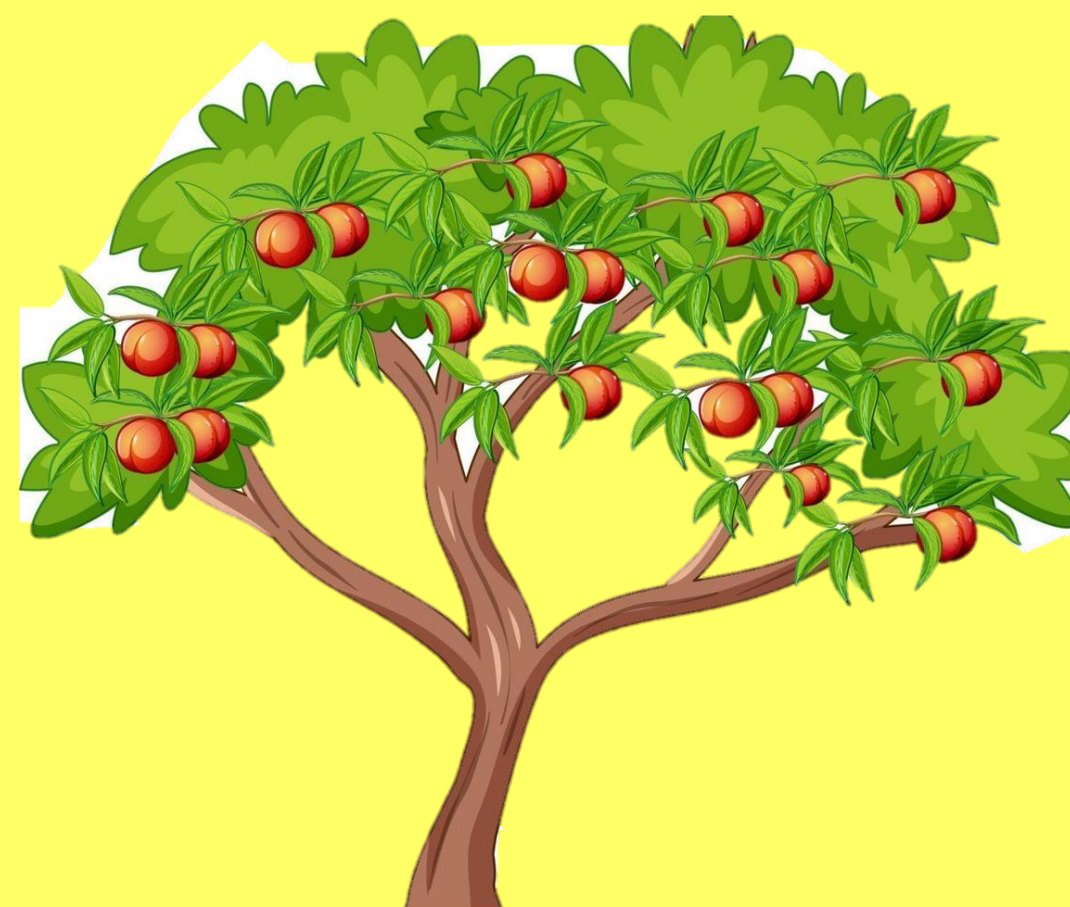
**Western
flower thrips**



*Give the possibility to play
“Preventive measures”
next turn after drawing
a weather card*

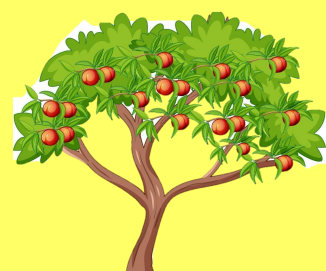


Crop cycle : 1 to 4





+1



+1

For each pest

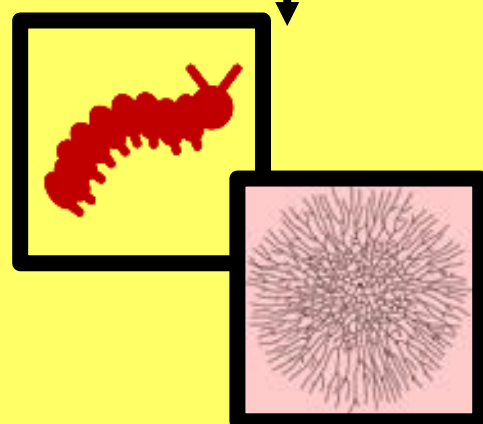
Spraying Decision Support System



All



*Play with pesticide or biocontrol
product with cumulative effects*

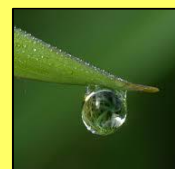


Tox



0

Res



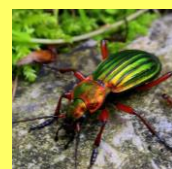
-1

Eco



-1

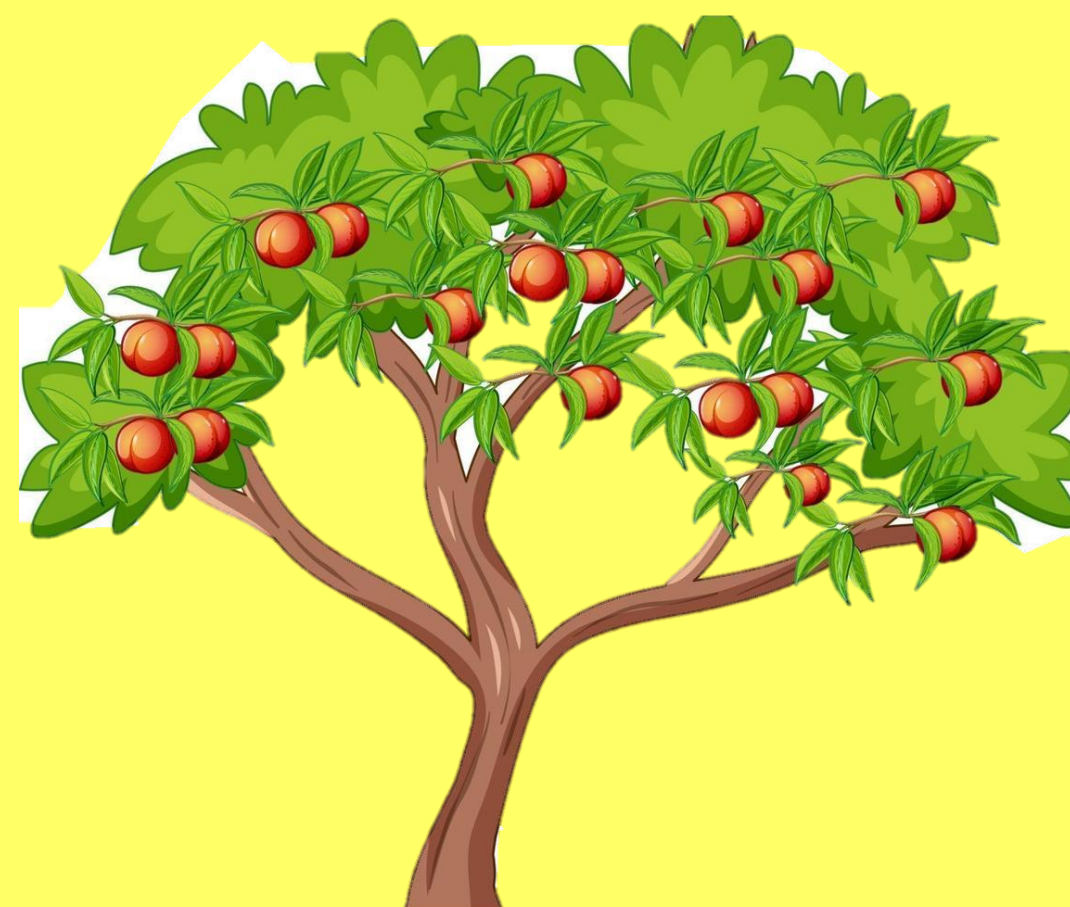
Ben



-1



Crop cycle : 1 to 5





+2



+1

Low drift sprayer



All



Play with pesticide or biocontrol product with cumulative effects.

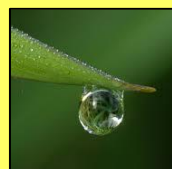


Tox



-1

Res



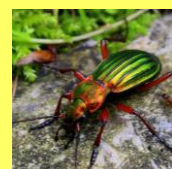
0

Eco



-1

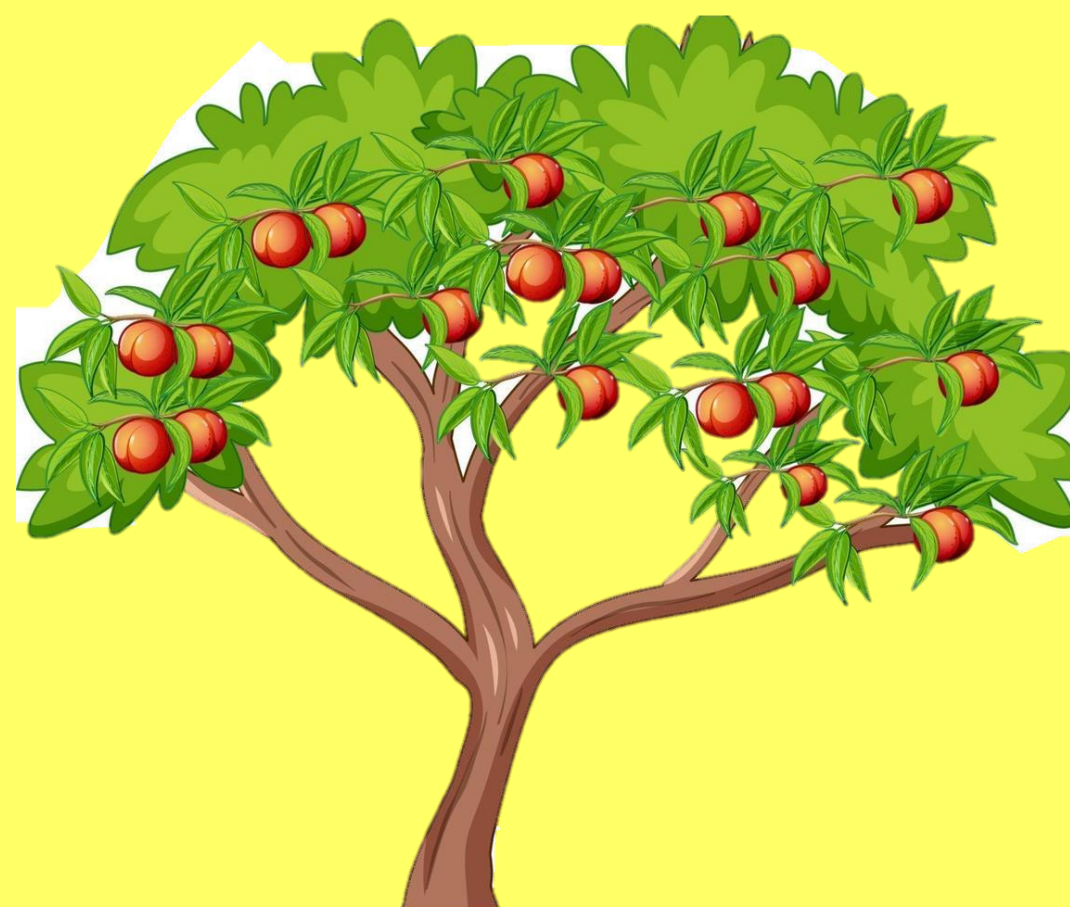
Ben



-1

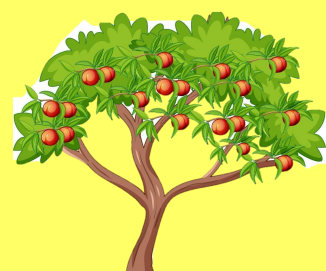


Crop cycle : 1 to 5





+1



0

Adjuvant



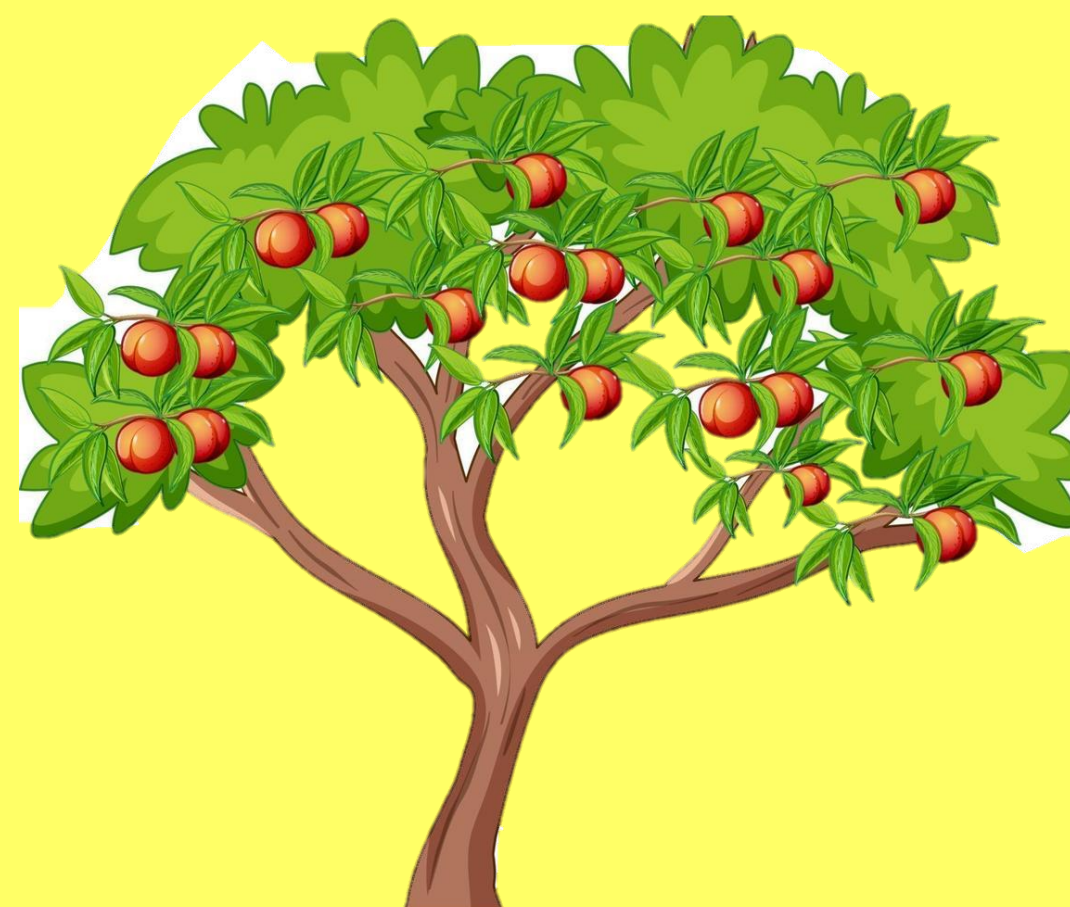
All



*Play with biocontrol product to
be applicable by dry weather*



Crop cycle : 1 to 5





+2



0 / 1

Alone

Biostimulant



All



Preventative effect



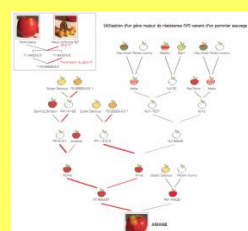
*Alone if risk ≤ 0 or
pressure = 0*

-1



*Can increase the
efficiency of
microorganisms or
natural substances*

-1

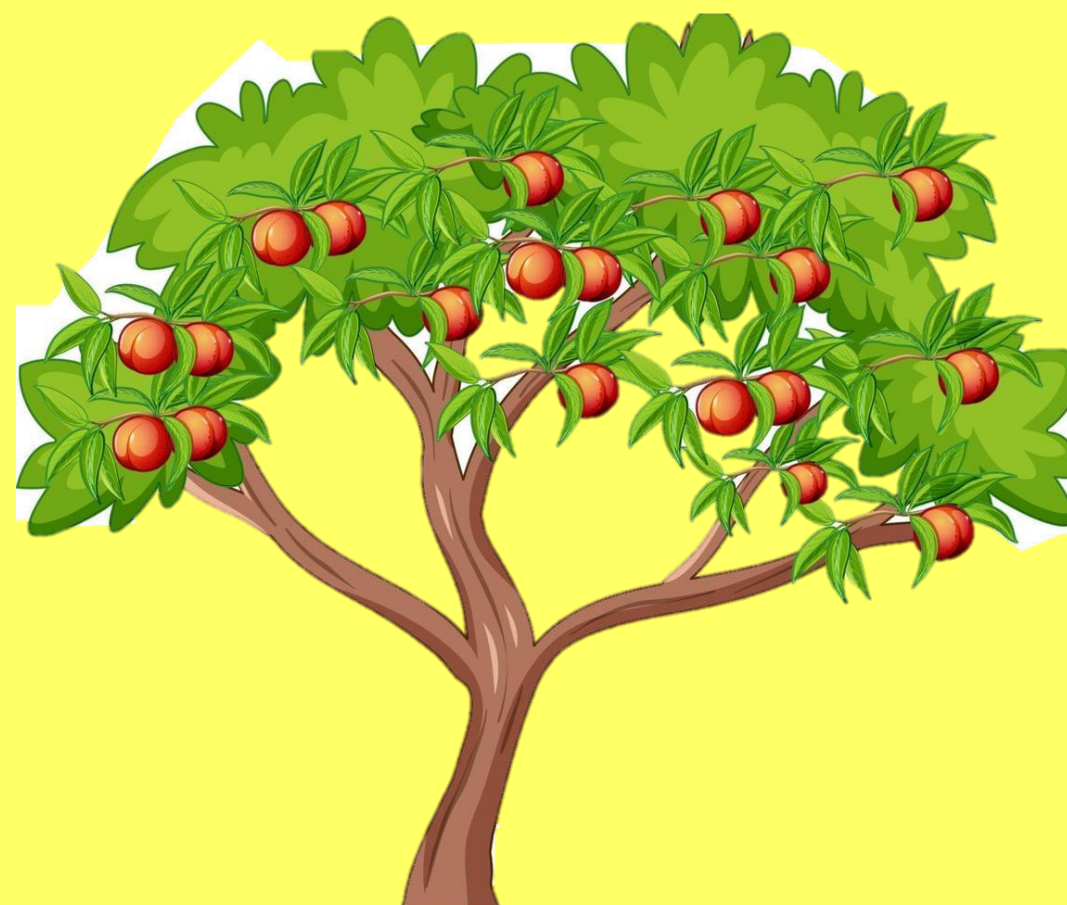


*maintains
the durability
of the variety
resistance
over time*



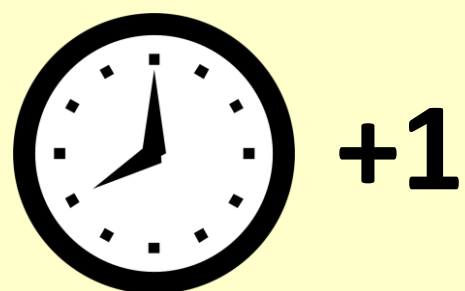
Crop cycle : 1 to 4

1 solution






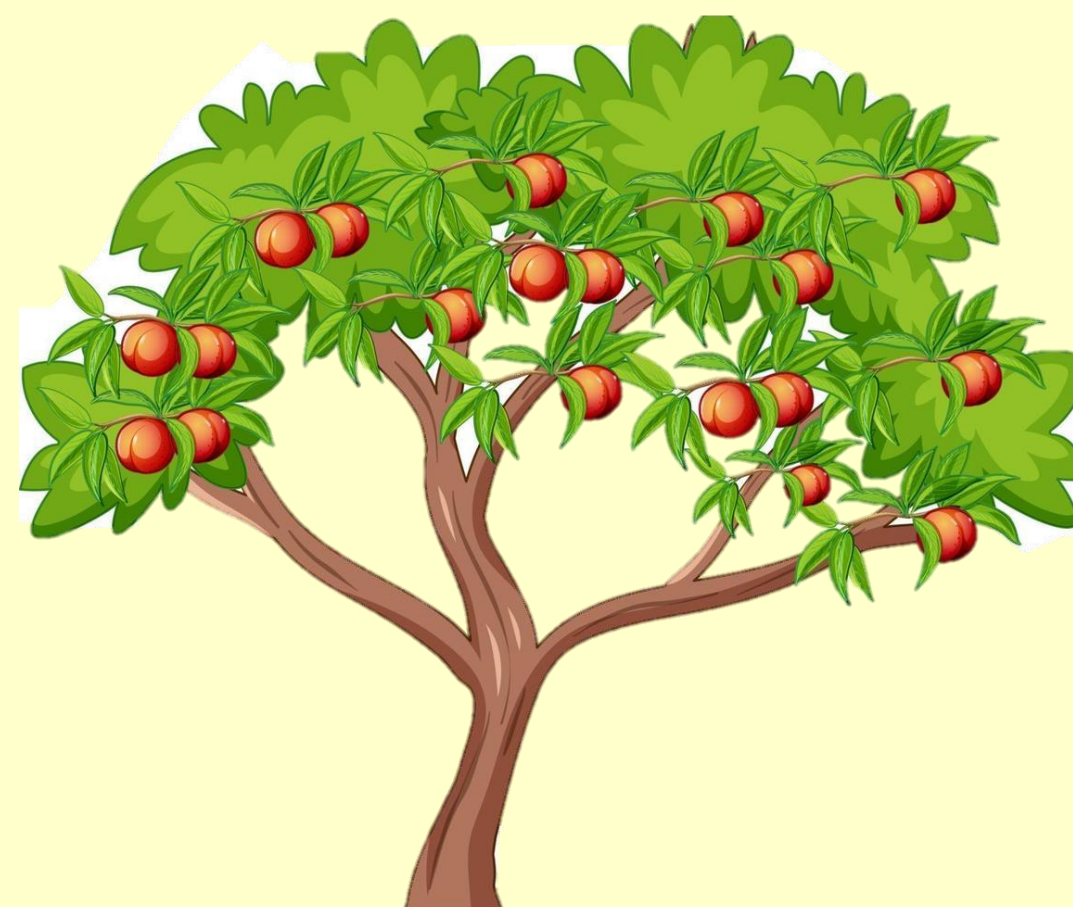
FWF ***(Farm Work Firm)***



*The additional unit of time
must be spent during the period*

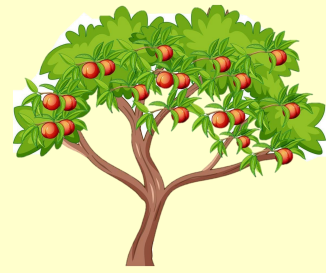


Crop cycle :  1 to 5





0



Associated treatments

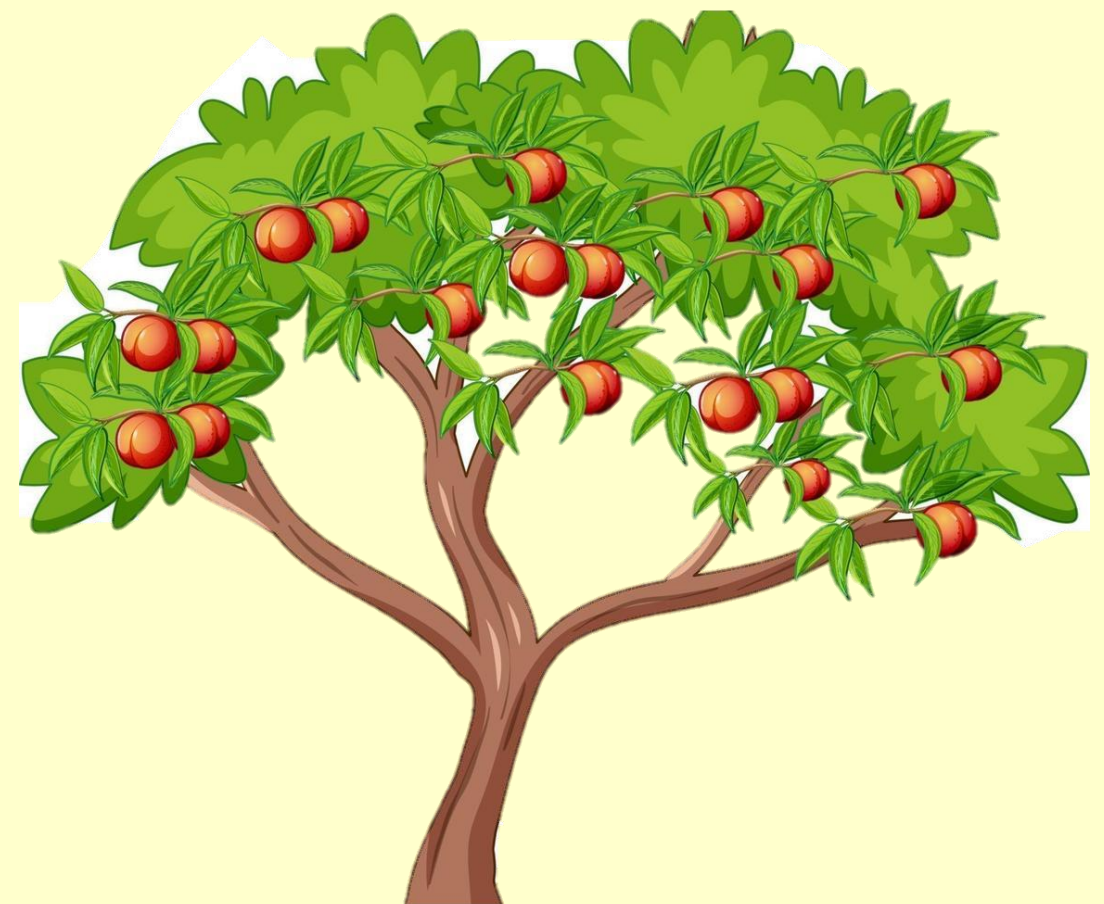


+1

You win 1 time unit when you spray with 2 biocontrol

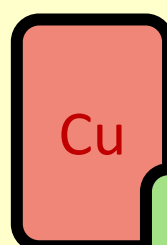


Crop cycle : 1 to 5





Biocontrol product + 1/2 dose of copper



Leaf curl
Brown rot



Preventive effect

+1 **Copper efficacy is low**



+1 You win 1 time unit when you
spray this associations

And you reduce impact of copper

Tox



-1

Res



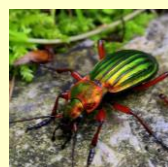
-1

Eco



-1

Ben



-1



Periods : 1 to 5

