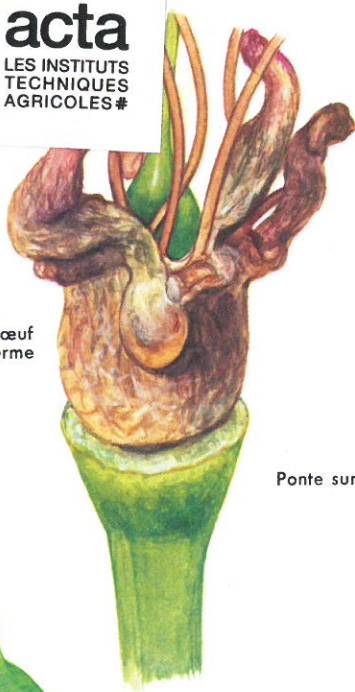
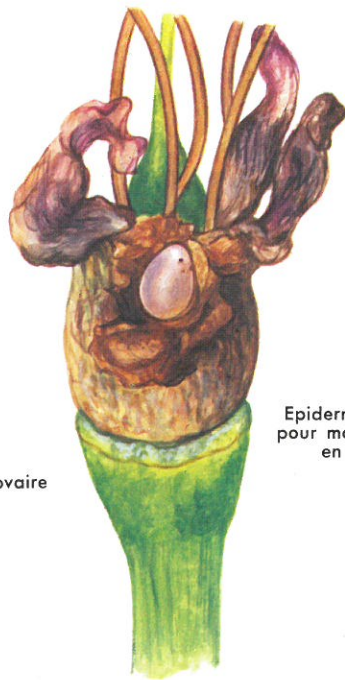


HOPLOCAMPES DU PRUNIER

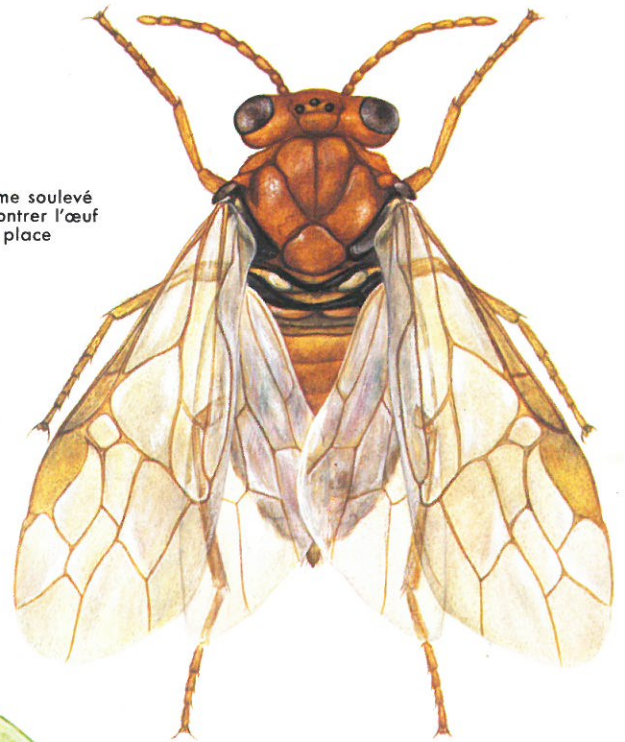
Saillie de l'œuf
sous l'épiderme



Ponte sur ovaire



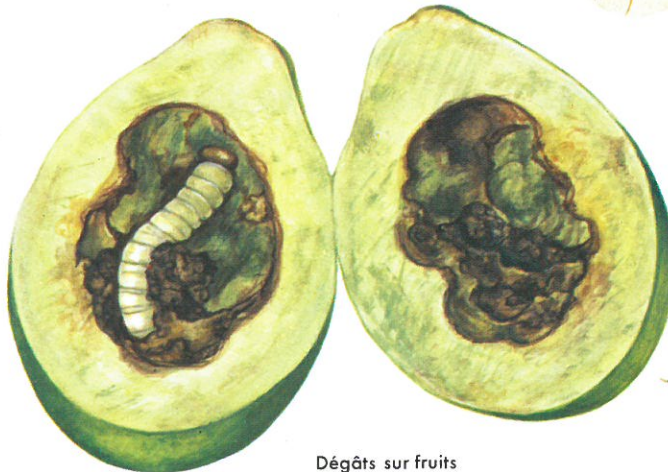
Epiderme soulevé
pour montrer l'œuf
en place



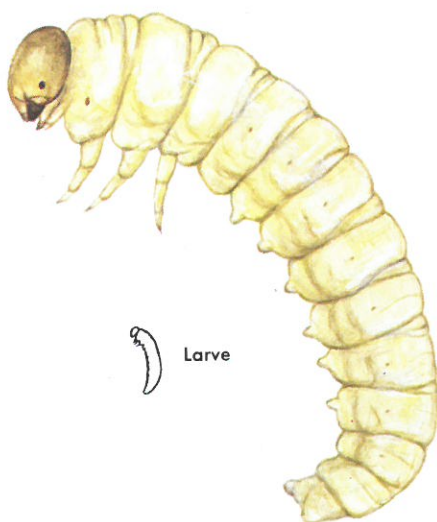
Adulte de
Hoplocampa flava



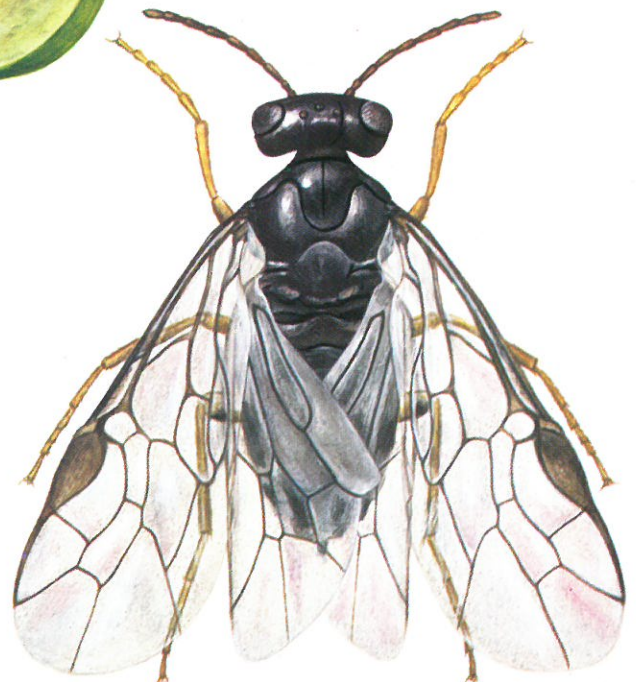
Jeune fruit
avec trou de sortie
de la larve



Dégâts sur fruits



Larve



Adulte de
Hoplocampa minuta